

Figure 1

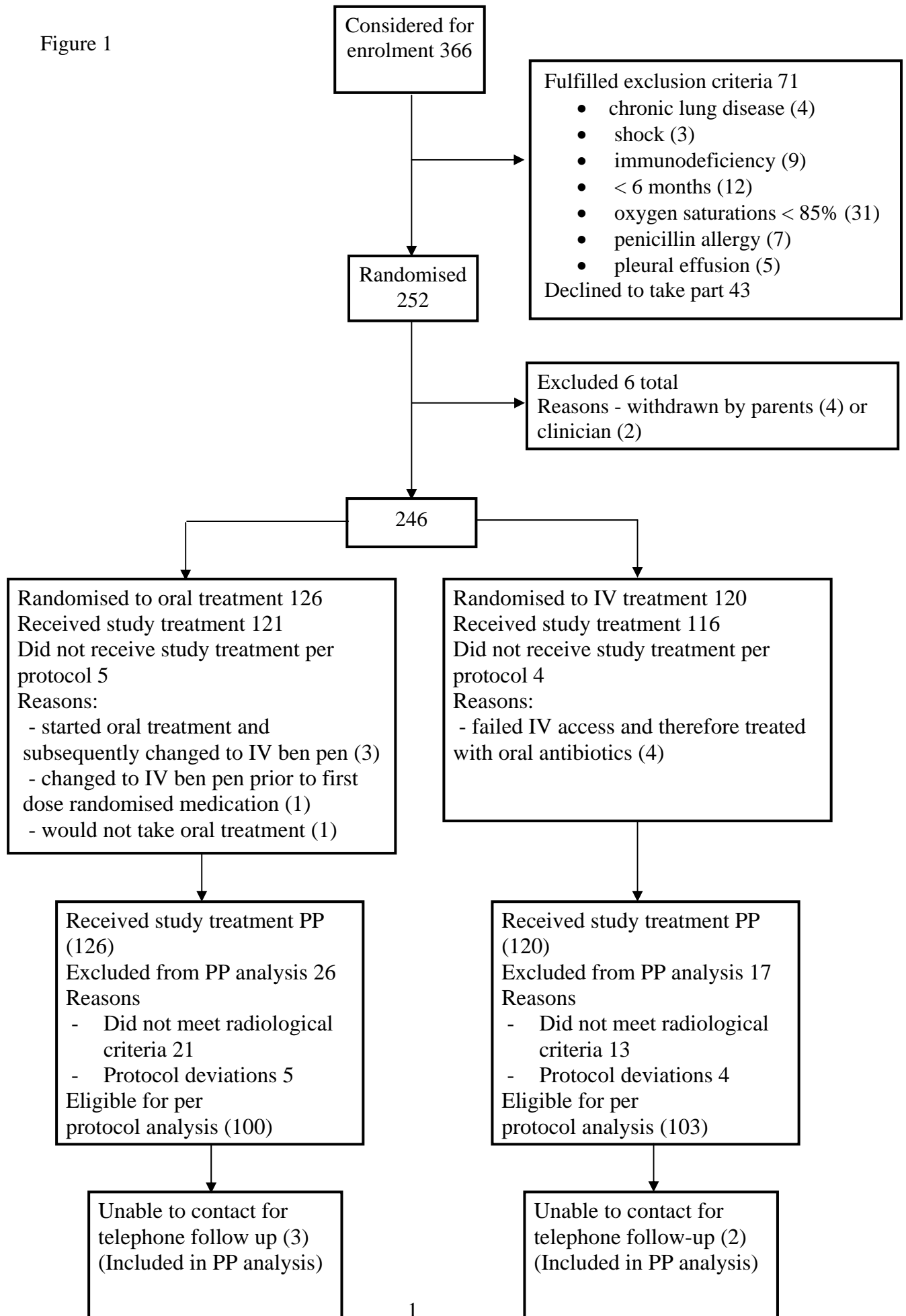
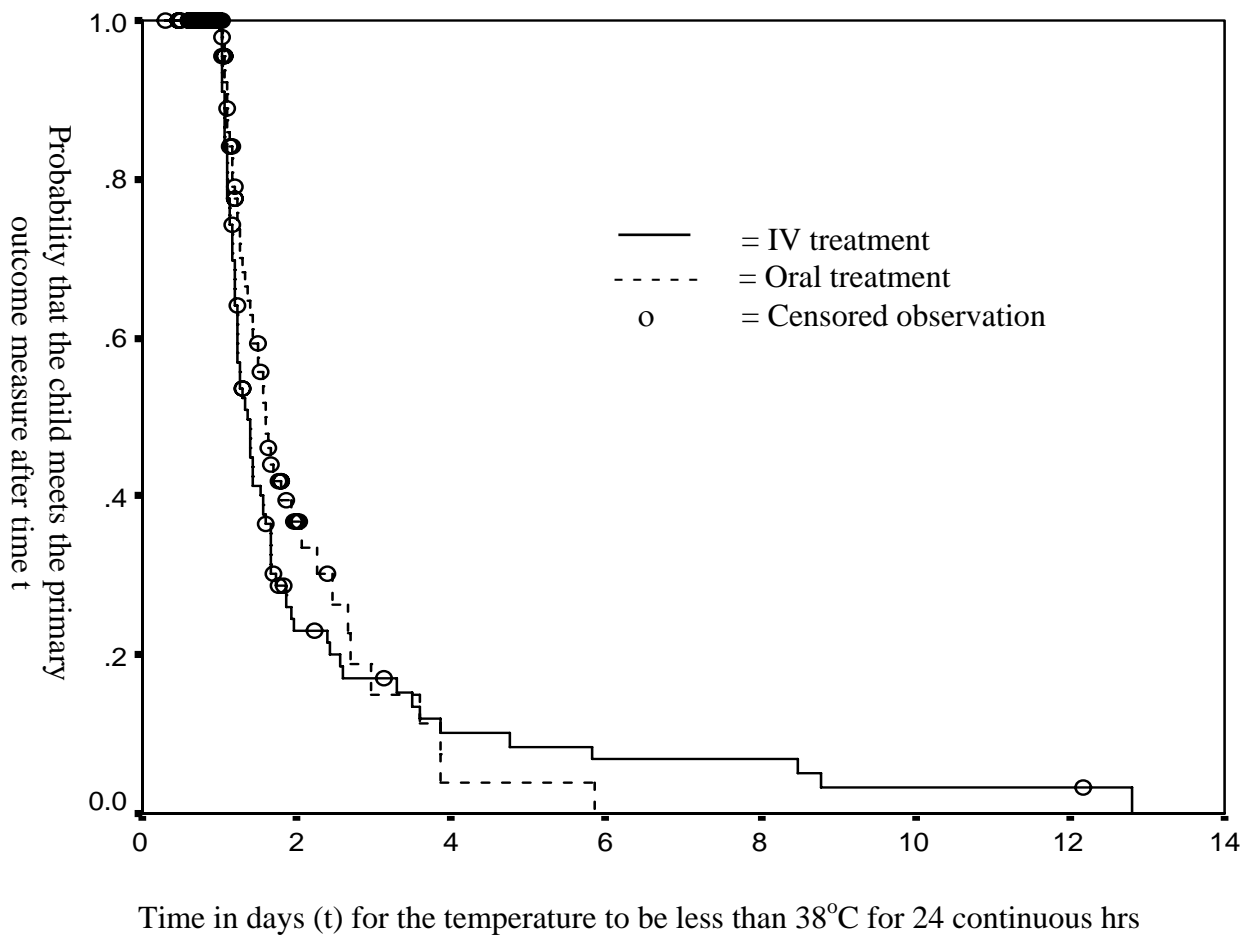


Figure 2

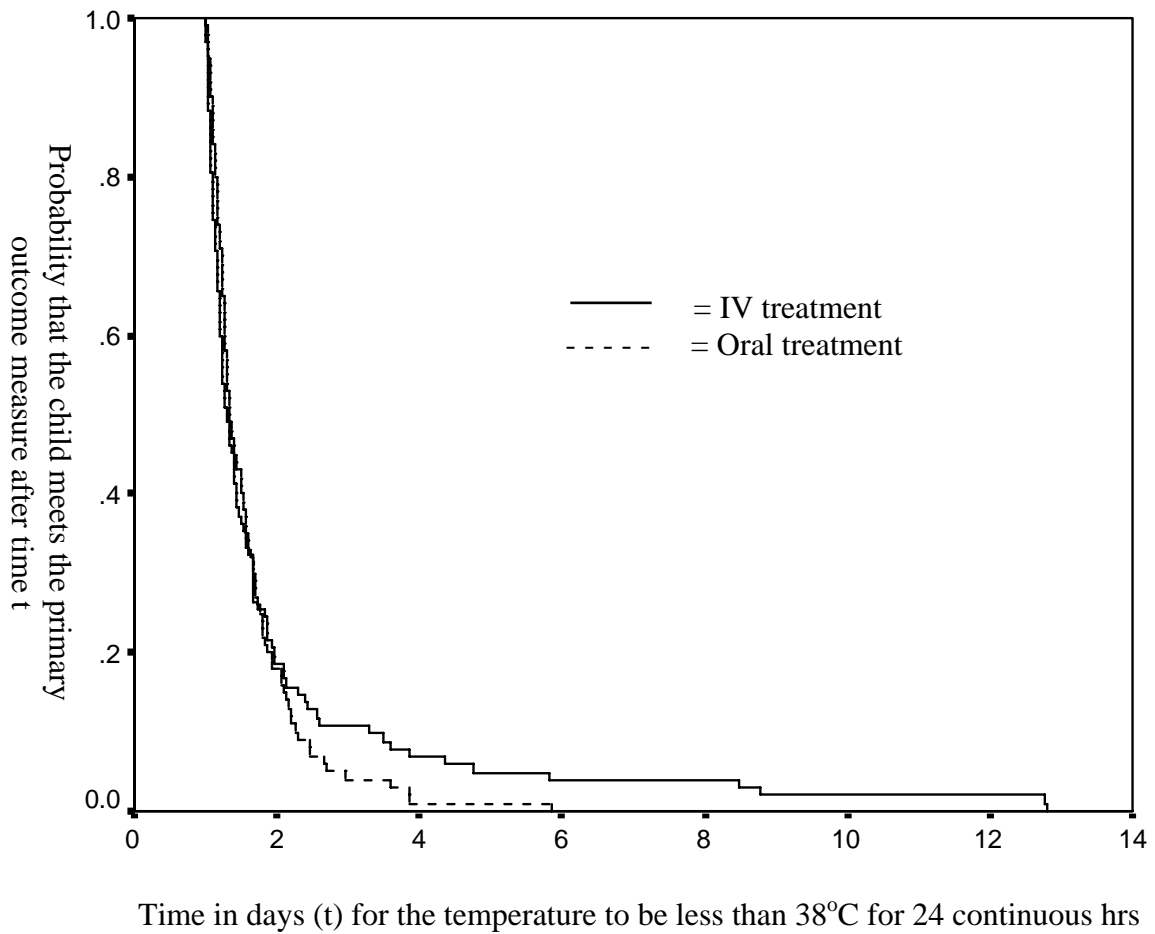
Survival curve for the time for the temperature to be  $< 38^{\circ}\text{C}$  for 24 continuous hours and oxygen requirement to cease in the 2 treatment groups (censored data, per protocol analysis)



Per protocol analysis  $p = 0.031$

Figure 3

Survival curve for the time for the temperature to be  $< 38^{\circ}\text{C}$  for 24 continuous hours and oxygen requirement to cease in the 2 treatment groups (no censored data, per protocol analysis)



Per protocol analysis  $p= 0.001$