



Editor's choice
Scan to access more
free content

ORIGINAL ARTICLE

Diesel exhaust augments allergen-induced lower airway inflammation in allergic individuals: a controlled human exposure study

Chris Carlsten,^{1,2} Anders Blomberg,³ Mandy Pui,¹ Thomas Sandstrom,³ Sze Wing Wong,¹ Neil Alexis,⁴ Jeremy Hirota^{1,2}

► Additional material is published online only. To view, please visit the journal online (<http://dx.doi.org/10.1136/thoraxjnl-2015-207399>).

¹Division of Respiratory Medicine, Department of Medicine, Chan-Yeung Centre for Occupational and Environmental Respiratory Disease, University of British Columbia, Vancouver, British Columbia, Canada

²Centre for Heart Lung Innovation, Institute for Heart and Lung Health, University of British Columbia, Vancouver, British Columbia, Canada

³Division of Medicine/Respiratory Medicine, Department of Public Health and Clinical Medicine, Umeå University, Umeå, Sweden

⁴Department of Pediatrics, University of North Carolina, Chapel Hill, North Carolina, USA

Correspondence to

Dr Chris Carlsten, Gordon and Leslie Diamond Health Care Centre, The Lung Center, Vancouver General Hospital (VGH), 2775 Laurel Street, 7th floor, Vancouver, BC, Canada V5Z 1M9; carlsten@mail.ubc.ca

Received 6 June 2015

Revised 2 October 2015

Accepted 19 October 2015

Published Online First

16 November 2015

ABSTRACT

Rationale Traffic-related air pollution has been shown to augment allergy and airway disease. However, the enhancement of allergenic effects by diesel exhaust in particular is unproven *in vivo* in the human lung, and underlying details of this apparent synergy are poorly understood.

Objective To test the hypothesis that a 2 h inhalation of diesel exhaust augments lower airway inflammation and immune cell activation following segmental allergen challenge in atopic subjects.

Methods 18 blinded atopic volunteers were exposed to filtered air or 300 µg PM_{2.5}/m³ of diesel exhaust in random fashion. 1 h post-exposure, diluent-controlled segmental allergen challenge was performed; 2 days later, samples from the challenged segments were obtained by bronchoscopic lavage. Samples were analysed for markers and modifiers of allergic inflammation (eosinophils, Th2 cytokines) and adaptive immune cell activation. Mixed effects models with ordinal contrasts compared effects of single and combined exposures on these end points.

Results Diesel exhaust augmented the allergen-induced increase in airway eosinophils, interleukin 5 (IL-5) and eosinophil cationic protein (ECP) and the GSTT1 null genotype was significantly associated with the augmented IL-5 response. Diesel exhaust alone also augmented markers of non-allergic inflammation and monocyte chemotactic protein (MCP)-1 and suppressed activity of macrophages and myeloid dendritic cells.

Conclusion Inhalation of diesel exhaust at environmentally relevant concentrations augments allergen-induced allergic inflammation in the lower airways of atopic individuals and the GSTT1 genotype enhances this response. Allergic individuals are a susceptible population to the deleterious airway effects of diesel exhaust.

Trial registration number NCT01792232.

INTRODUCTION

While viral and allergenic exposures have been the primary focus of research on asthma exacerbation, the evidence linking combustion-derived particulate matter (PM)¹ to asthma symptoms and exacerbations is also considerable.² Worldwide ambient PM exposures cause a loss of approximately 3% of global healthy life years.³ Diesel exhaust (DE) is a key source of ambient PM less than 2.5 µ in diameter (PM_{2.5}),⁴ which penetrates deeply into the

Key messages

What is the key question?

- Does freshly generated diesel exhaust augment effects of allergen exposure in the lower airways in atopic human subjects?

What is the bottom line?

- We demonstrate that inhalation of diesel exhaust preceding segmental allergen challenge augments allergic inflammation in the lower airways of atopic individuals. Specifically, airway neutrophils, eosinophils, interleukin (IL) 5, IL-8, eosinophil cationic protein (ECP) and monocyte chemotactic protein (MCP)-1 were augmented.

Why read on?

- This is the first study to perform controlled human exposure to freshly generated diesel exhaust following segmental allergen exposure in the lower airways of atopic human subjects.

lung and has been strongly associated with acute deterioration of asthmatic lung function.⁵

Allergen challenge and segmental allergen challenge (SAC) are clinically important tools to examine the pathophysiology of immune-mediated disease.⁶ SAC has elucidated the role of eosinophils in response to allergen exposure.^{7–8} Combustion particles appear to act as carriers of allergens, thereby facilitating the entrance of allergens into the airways.⁹ Air pollutants may also exert adverse effects indirectly by acting on allergens. Allergen morphology and allergenicity appear modified following interactions with air pollutants.^{10–11} Accordingly, a model of combined exposure to air pollution and allergen is desirable.

Rodent models and *in vitro* studies using human-derived cells have shown that particles derived from DE augment allergenic effects on Th2 cytokines, eotaxin and eosinophil activities.^{12–14} DE-associated augmentation of select allergenic phenomena was shown in a human nasal model,^{15–16} and similar findings were noted with other particulate exposures.^{17–18} Still, DE's enhancement of allergenic effects has never been demonstrated *in vivo* in the distal human lung, a site of pathological importance in allergic disease, and the underlying details of this potential synergy are poorly understood.



CrossMark

To cite: Carlsten C, Blomberg A, Pui M, et al. *Thorax* 2016;**71**:35–44.

Table 1 Inhaled exposure characteristics

Condition	PM _{2.5} (µg/m ³)	Particle No. (cm ³)	CO (ppm)	NO (ppb)	NO _x (ppb)	NO ₂ (ppb)	NO ₂ /PM# (µg/#)
Filtered air	8.2 (6.9)	1750.4 (235.1)	2.8 (0.1)	25.3 (5.0)	71.1 (9.8)	45.9 (7.7)	4.9×10 ⁻⁹
Diesel exhaust	302.0 (30.5)	5.4×10 ⁵ (6.4×10 ⁴)	14.1 (2.0)	8665.5 (1287.1)	9185.3 (1366.1)	519.7 (118.6)	1.8×10 ⁻⁹

Values are mean (SD).

CO, carbon monoxide; NO, nitrous oxide; NO_x, Oxides of nitrogen; NO₂, nitrogen dioxide; PM, particulate matter; PM_{2.5}, particulate matter of 2.5 µ, or less by aerodynamic diameter.

Therefore, we hypothesised that a 2 h inhalation of DE at 300 µg PM_{2.5}/m³ would augment the lower airway allergic inflammatory response to SAC in atopic subjects. Our primary outcomes were bronchoalveolar lavage (BAL) eosinophils and eosinophilic activation; secondary outcomes were markers of non-allergic inflammation (other BAL inflammatory cell counts) and adaptive and innate immune responses (dendritic and T-cell surface marker activation, specific IgE and cytokine levels). We predicted that our end points would increase in a specific ranked order, with the baseline (filtered air and saline (FAS)) condition followed by DE, allergen and DE *plus* allergen. Furthermore, we interrogated whether individuals with common polymorphisms of genes associated with metabolism of reactive oxidative species (glutathione-S-transferase M1 (*GSTM1*) and *GSTT1*) were particularly susceptible to the effects of co-exposure to inhaled DE and allergens, given the reported influence of these genes on human response to air pollution.^{19 20}

METHODS

Ethics

The ethical review boards of the University of British Columbia and the Vancouver Coastal Health Research Institute approved the study. Written informed consent was obtained from each participant. The study was registered at ClinicalTrials.gov (trial no. NCT01792232).

Subjects and exposure protocols

We recruited for the following inclusion criteria: age 19–49 years, non-smoking, able to provide informed consent by local advertising and referral/solicitation of clinic patients and skin prick-positive to one of our three study allergens: birch, Pacific grasses and house dust mite (*Dermatophagoides pteronyssinus* group 1). On primary screening we excluded those with any of the following: (1) pregnancy/breastfeeding, (2) use of inhaled corticosteroids, (3) regular use of bronchodilator medication (ie, use of bronchodilators more than three times per week), (4) unstable asthma symptoms, (5) any use of vitamins A, C, E or antioxidant supplements, (6) comorbid conditions judged by the investigators to increase risk of dropout or (7) work in an industrial setting or other setting of significant inhaled exposures. For detailed determination of study allergen and other screening procedures, see the online supplement. Consented subjects entered a crossover experiment using two conditions (DE at 300 µg PM_{2.5}/m³ or filtered air (FA); table 1) each for 2 h, the order of which was randomised and counterbalanced. DE exposure generation used a previously described system that excludes potential contamination with lipopolysaccharide,²¹ except that in the present study we used a 2.5 kW constant load.

We provide a representative image of the PM generated by the 2.5 kW constant load (figure 1), in addition to table 1. The mean temperature was 24.2°C (SD 0.5°) and the mean relative humidity was 35.3% (SD 2.0). Notably, the protocol allows for effective blinding of both the subjects²² and those analysing all material and data. Figure 2 summarises the crossover design,

including the SAC. Briefly, we used skin prick testing to identify sensitisation to a study allergen and then to choose the concentration for the segmental challenge of that allergen. The allergen and diluent control were instilled in right middle and lingular sub-segments and the identical sub-segments were entered 48 h later for sampling. This is detailed further in the online supplement. This effectively results in four exposure conditions per subject: FAS, diesel exhaust and saline (DES), filtered air and allergen (FAA) and DEA (diesel exhaust and allergen). The following assays were performed on the airway samples (FAS, DES, FAA, DEA) collected 48 h post exposure. Details of bronchial wash (BW) and BAL are provided in the online supplement.

Cell differential (BW and BAL)

A total of 30 000 cells were spun down and stained with Harleco Hemacolor kit (EMD Millipore, Billerica, Massachusetts, USA) for each cytospin. Two observers counted at least 400 cells for every sample, and total cells (cells/mL of lavage fluid) and differential (percentage) cells were counted for macrophages, neutrophils, bronchial epithelial cells, eosinophils and lymphocytes. The counts were averaged and the interobserver variability was confirmed to be less than 10% for all samples.

Cytokines (BW and BAL)

The concentrations of interleukin (IL)-1Ra, IL-6, IL-8, interferon gamma-induced protein 10 (IP10), monocyte chemotactic

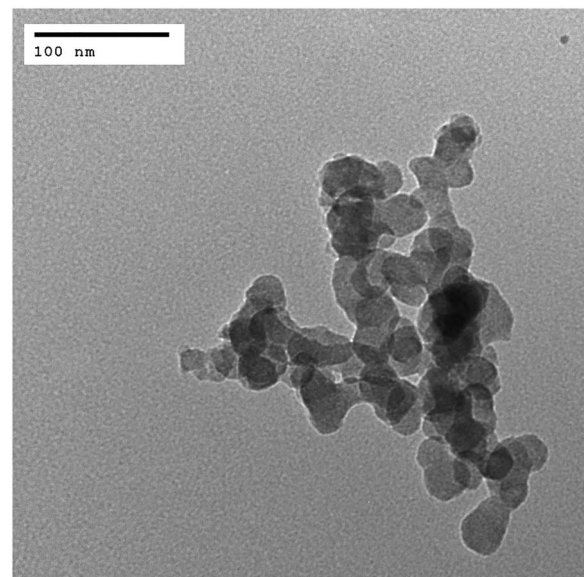


Figure 1 Transmission electron microscopy (TEM) image of diesel exhaust particle collected from the Air Pollution Exposure Laboratory exposure booth. Diesel exhaust particles were collected from the engine at a load of 2.5 kW, corresponding to the regular exposure conditions. The particles were collected on a carbon-coated TEM grid.

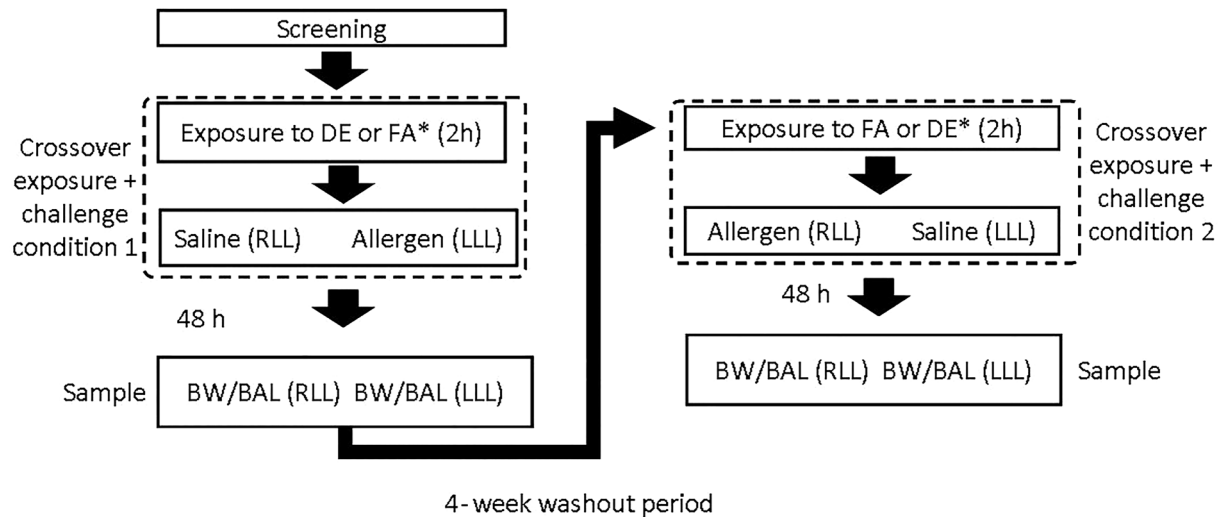


Figure 2 Outline of sequence of exposure and sampling. All subjects received DE and FA, separated by washout; subjects were randomised to received either DE or FA first. BAL, bronchoalveolar lavage; BW, bronchial wash; DE, diesel exhaust; FA, filtered air; RLL, right lower lobe; LLL, left lower lobe.

protein (MCP)-1, major intrinsic protein (MIP)-1 β , and RANTES were determined in both BW and BAL. IL-5, IL-13, IL-15, CCL-20, eosinophil cationic protein (ECP), granulocyte-colony stimulating factor (GCSF), 8-isoprostane, tumour necrosis factor- α and vascular endothelial growth factor were determined only in BAL due to smaller volumes in BW. They were assessed using the Luminex assays (Human Cytokine/Chemokine Magnetic Bead Panels I and II and the Human Th17 Magnetic Bead Panel, EMD Millipore Corporation, Billerica, Massachusetts, USA). Cytokine concentration units are given in picogram/millilitre or nanogram/millilitre (ECP). The limits of detection were as listed in the product literature.

T-cell subsets, eosinophil and dendritic cell characterisation and activation (BAL)

We assessed percentage T-cell subsets (cytotoxic, helper, regulatory), percentage eosinophils and percentage dendritic cells (DCs) and each of their cell surface phenotype activation (in terms of mean fluorescence intensity (MFI)) by flow cytometry using BD FACSCanto II. For all staining, cells were pelleted, resuspended in 50 μ L phosphate-buffered saline and then incubated for 30 min. Specific markers and associated fluorophores are noted in Table E1 (see online supplement).

Allergen-specific IgE

The level of IgE specific to the allergen used in the segmental challenge for a given patient was assessed in BAL by the ImmunoCAP system, given its high sensitivity and its specificity similar to other methods.²³

Genotyping

Individual status for *GSTM1* and *GSTT1* (present/null) was assessed due to the prominence of these genes in the air pollution literature, the high prevalence of variants in these genes in the general population and the known loss of function associated with the null genotype.^{19 20} Genotyping was by gel electrophoresis after multiplex PCR using DNA isolated from blood. β -globulin gene (primer pairs: forward 5'-CAA CTT CAT CCA CGT TCA CC-3'; reverse 5'-GAA GAG CCA AGG ACA GGT AC-3') was used as an internal control. The primer

pairs for each gene were as follows: *GSTM1*: 5'-GAACTCC CTGAAAAGCTAAAGC-3', 5'-GTTGGGCTCAAATATACGG TGG-3'; *GSTT1*: 5'-TTCCTACTGGTCCTCACATCTC-3', 5'-TCA CCG GAT CAT GGC CAG CA-3'.

Statistical analysis

p Values less than 0.05 were considered significant. A mixed effects model was used to estimate all effects, and pertinent contrasts were used to test the hypotheses. Models included inhaled exposure (DE or FA), segmental exposure (allergen or saline), order (DE before FA or FA before DE) and gene variant status (*GSTM1* present or null; *GSTT1* present or null) as fixed effects, and subject identification number as a random effect. Inhaled exposure effect ('DE'), segmental exposure effect ('allergen') and order effect were each assessed and are reported as such in the results. A mixed effects model was used to examine the potential interaction between DE and allergen exposure, statistically on the multiplicative level. We also performed analysis of ordinal contrasts (see online supplement) to assess our a priori hypothesis that our end points would be ranked in the following order: FAS < DES < FAA < DEA. Finally, we looked at GST interactions with exposure (as an ordered factor for those end points with a significant ordinal effect).

RESULTS

Our study enrolled 11 women and 7 men, aged 20–46 years (table 2). Of these, six had baseline hyper-responsiveness to methacholine ($PC_{20} \leq 8$ mg/mL); three of these six were doctor-diagnosed with asthma. Baseline FEV₁ ranged from 66% to 143% predicted; baseline PC_{20} ranged from 0.23 to >16 mg/mL methacholine. One subject did not consent to genotyping; 10/17 were genotype *null* for *GSTM1* and 8/17 were genotype *null* for *GSTT1*.

All 18 subjects completed all four bronchoscopies. However, analysis was not based on 72 (18 \times 4) samples for each end point because of variable return from the washings; specifically, for a given subject, the ability to compare all four samples for all end points was limited by the return (of the four samples, whether from BW or BAL) with the lowest yield. Once that subject's lowest-volume return was fully used, then four-way comparisons

Table 2 Demographics of 18 subjects enrolled in study

Subject	Gender	Age	FEV ₁ % predicted	Baseline PC ₂₀ (mg/mL)	GSTM1 genotype	GSTT1 genotype
1	F	22	144	>16	Present	Null
2	F	22	107	3.5	N/A	N/A
3	F	20	104	13.9	Present	Null
4	F	31	113	>16	Null	Null
5	F	24	116	>16	Null	Null
6	M	32	123	>16	Null	Null
7	F	34	79	0.2	Null	Present
8	M	27	105	>16	Present	Present
9	F	25	117	>16	Null	Null
10	M	46	66	0.3	Present	Null
11	M	27	107	>16	Null	Present
12	F	46	63	>16	Null	Present
13	F	20	98	2.1	Present	Present
14	F	31	103	0.3	Null	Null
15	M	28	100	>16	Null	Present
16	M	23	104	2.4	Present	Present
17	F	23	101	>16	Null	Present
18	M	23	112	>16	Present	Present

N/A refers to subject who did not consent to genotyping.

GST, glutathione-S-transferase; PC₂₀, concentration of methacholine that reduces FEV₁ 20% from baseline.

for that subject were no longer possible. This (running out of sample for at least one of the four conditions) did occur more frequently for BW (as expected, given lower volume relative to BAL) such that the number of subjects with all four conditions for comparison was as follows, per end point: *cytokines*: BAL=18, BW=15; *IgE*: BAL=17, BW=17; *cell counts*: BAL=15, BW=11 and *flow cytometry*: BAL=16, not performed on BW.

No adverse clinical events were reported. However, as detailed below, DE generally augmented allergen-induced markers of both allergic and non-allergic inflammation, along with innate and adaptive immune responses, and null status for *GSTT1* (but not *GSTM1*) further enhanced the increases in some of these end points.

Changes in number and proportion of airway leucocytes and macrophages

In BW, lymphocytes and eosinophils cell numbers decreased with DE, reflecting the trend of decreasing overall cell number with DE. Eosinophils (total and percentage) increased with allergen (table 3). In BAL, allergen increased total cells, neutrophils (total and percentage) and eosinophils (total and percentage) and decreased macrophages (percentage) and there was a significant ordinal effect on neutrophils, macrophages and eosinophils and total cells. Other changes were not significant.

Changes in number, proportion and cell surface marker activation of airway dendritic cells, macrophages and T cells

DC, macrophage and T-cell quantification and phenotyping were performed on BAL cells (table 4). CD4 expression in helper T-cells, Foxp3 expression in regulatory T cells and cytotoxic and regulatory T-cell activity (MFI) increased with allergen. There was a positive ordinal effect on CD4 expression in helper T cells. CD86 expression of macrophages and DCs was

suppressed by DE alone. Other changes (whether in terms of total number or percentage) were not significant.

Change in airway cytokines and chemokines

Cytokine and chemokine measurements performed on BW and BAL were differentially influenced by exposure condition (table 5). BAL levels of IL-15 decreased with DE, while IL-1Ra, IL-8, IP10 and MCP-1 in BW increased with allergen. IL-8, chemokine (C-C motif) ligand 20 (CCL20), ECP, GCSF, IP10 and MCP-1 in BAL increased with allergen. There was a positive ordinal effect on IL-8, ECP and MCP-1 in BAL. Other changes were not significant.

Change in allergen-specific IgE

The BAL allergen-specific IgE levels were below the limit of detection (0.35 kU/L) in 53 of 64 samples (from 16 subjects with sufficient lavage fluid in each of four exposure conditions), such that it was not feasible to perform an analysis based on average levels of specific IgE. Therefore, we instead considered the number of samples in each condition that was above the limit of detection and this was most frequently the case with DEA (5/16) versus the other conditions (FAS: 1/16; DES 2/16; FAA 3/13), but this trend was not significant ($p=0.17$).

Additive and multiplicative interactions

There were no multiplicative-level interactions between DE and allergen. The seven end points with significant ordinal effect (additive-level interaction) are represented graphically in figure 3. Two end points were significant in terms of interaction between exposure conditions and *GSTT1*, indicating that the effect was strongest in those with the *GSTT1* null genotype for BAL IL-5 (interaction $p=0.02$) and activation of cytotoxic CD69+ T cells (interaction $p=0.01$; figure 4).

DISCUSSION

The plausibility of synergisms among environmental pollutants and allergens to induce enhanced allergic responses in atopic individuals is generally accepted but specific human in vivo experimental validation of this concept is difficult to achieve and hence limited. Accordingly, we implemented a novel experimental exposure study (DE followed closely by allergen exposure) that tested the hypothesis that DE augments the effects of allergen in the lower airway. We measured a range of allergic inflammatory and immune-related end points in response to single and combined exposure to DE and allergen, and examined the role of GST genotypes in terms of potential to confer increased risk for DE-augmented responses.

Overall, we report that DE has an additive effect on several markers of allergic inflammation (eosinophils, IL-5, ECP) as well as non-allergic inflammation (neutrophils, IL-8, MCP-1). This is an important finding given that our experimental DE level is consistent with short-term real-life ambient exposures,^{24 25} in low/middle-income countries in Asia,^{26 27} and in occupational settings,^{28 29} though we recognise that these levels are uncommon in most ambient settings and at the upper end within the range of prior controlled human studies.²¹ That said, these findings differ from similar earlier studies of DE alone, where inflammatory markers like ECP and MCP-1 were not reported or reported markers (neutrophils, IL-8) were from the large airways and not from distal alveolar lung regions.³⁰ This raises the possibility that the addition of allergen may variably affect different regions within the airway, either due to airway biology that varies regionally (with equal amounts of allergen) and/or due to variable regional dosing of allergen (perhaps

Table 3 Bronchial wash (BW) and bronchoalveolar lavage (BAL) cell counts

	Mean (95% CI)				p Value		
	FAS	DES	FAA	DEA	DE effect	Allergen effect	Ordinal effect
BW							
Total cells*	748.8	480.0	728.3	522.2	0.14	0.96	NA
Neutrophils*	141.1 (27.2 to 731.6)	25.7 (4.5 to 146.8)	103.1 (22.2 to 479.0)	105.0 (18.3 to 601.2)	0.20	0.51	NA
Neutrophils %	8.7 (2.5 to 30.4)	2.3 (0.6 to 9.0)	8.4 (2.7 to 26.3)	9.4 (2.4 to 36.6)	0.31	0.31	NA
Lymphocytes*	1.1 (0.3 to 4.2)	0.2 (0.0 to 0.8)	1.1 (0.3 to 3.7)	0.2 (0.1 to 1.1)	0.01	0.81	NS
Lymphocytes %	0.3 (0.1 to 0.6)	0.1 (0.0 to 0.2)	0.2 (0.1 to 0.3)	0.1 (0.0 to 0.2)	0.07	0.47	NS
Macrophages*	517.4 (268.2 to 998.4)	341.8 (167.8 to 696.2)	464.5 (255.5 to 844.4)	329.7 (161.9 to 671.5)	0.20	0.78	NA
Macrophages %	60.0 (43.6 to 74.3)	53.7 (37.2 to 70.3)	46.7 (32.7 to 60.7)	48.6 (32.0 to 65.2)	0.82	0.15	NA
Eosinophils*	26.2 (10.2 to 67.3)	8.0 (2.9 to 22.3)	99.9 (42.7 to 233.7)	31.2 (11.2 to 86.9)	0.01	0.003	NS
Eosinophils %	2.4 (1.1 to 5.0)	1.1 (0.5 to 2.4)	7.8 (4.0 to 15.2)	4.3 (1.9 to 9.7)	0.06	0.001	NS
BECs*	63.0 (32.8 to 121.0)	104.3 (51.0 to 213.4)	59.7 (33.3 to 107.1)	56.1 (27.4 to 114.8)	0.52	0.36	NA
BECs %	6.0 (3.0 to 12.1)	12.2 (5.7 to 26.2)	4.6 (2.4 to 8.8)	6.3 (2.9 to 13.5)	0.11	0.16	NA
BAL							
Total cells*	8550.0	10940.5	15043.4	16548.1	0.55	0.007	0.009
Neutrophils*	727.1 (285.2 to 1853.6)	433.0 (173.9 to 1078.0)	1597.4 (609.8 to 4184.4)	2924.7 (1146.3 to 7462.5)	0.95	0.001	0.003
Neutrophils %	5.1 (2.4 to 11.1)	3.2 (1.5 to 6.8)	7.7 (3.5 to 17.1)	11.6 (5.3 to 25.2)	0.87	0.008	0.02
Lymphocytes*	23.1 (7.8 to 68.3)	43.0 (15.0 to 123.5)	64.0 (20.9 to 196.2)	10.3 (3.5 to 30.6)	0.26	0.60	NA
Lymphocytes %	0.2 (0.1 to 0.5)	0.4 (0.2 to 0.9)	0.4 (0.1 to 0.8)	0.1 (0.0 to 0.2)	0.40	0.21	NA
Macrophages*	7405.4 (4594.2 to 11936.9)	9949.2 (6266.5 to 15795.9)	11243.2 (6859.1 to 18429.3)	10270.0 (6371.3 to 16554.4)	0.66	0.38	NA
Macrophages %	70.5 (57.6 to 83.5)	77.0 (64.4 to 89.5)	62.7 (49.3 to 76.0)	52.83 (39.9 to 65.7)	0.81	0.008	0.01
Eosinophils*	242.8 (100.4 to 587.5)	191.7 (80.9 to 454.2)	1949.5 (786.6 to 4832.1)	3178.5 (1312.6 to 7696.7)	0.76	<0.0001	<0.0001
Eosinophils %	1.7 (0.9 to 3.3)	1.5 (0.8 to 2.7)	9.4 (5.0 to 18.0)	12.7 (6.8 to 23.9)	0.82	<0.0001	<0.0001
BECs*	151.6 (57.6 to 399.1)	323.6 (126.5 to 827.5)	189.7 (69.8 to 516.0)	164.6 (62.5 to 433.5)	0.49	0.60	NA
BECs %	1.3 (0.6 to 3.1)	2.9 (1.2 to 6.6)	1.1 (0.5 to 2.7)	0.7 (0.3 to 1.6)	0.66	0.04	NS

*Refers to absolute cell number per mL $\times 10^3$; % refers to percentage of given cell type as proportion of total cells; p values ≤ 0.05 are in bold. The ordinal effect p value is NA (not applicable, as analysis not performed) when DE and allergen p value were both greater than 0.1, as dictated by our statistical methods. NS refers to $p > 0.05$.

BEC, bronchial epithelial cell; DE, diesel exhaust; DEA, diesel exhaust and allergen; DES, diesel exhaust and saline; FAA, filtered air and allergen; FAS, filtered air and saline.

Table 4 Changes in T-lymphocyte subsets and activation of these subsets as well as eosinophil and dendritic cells by exposure condition, according to flow cytometry analysis of bronchoalveolar lavage

	Mean (95% CI)					p Value		
	FAS	DES	FAA	DEA	DE effect	Allergen effect	Ordinal effect	
Cytotoxic T-cell, % of leucocytes	2.7 (1.8 to 4.1)	2.7 (1.7 to 4.2)	2.1 (1.4 to 3.2)	2.1 (1.3 to 3.2)	0.94	0.27	NA	
T-helper cell, % of leucocytes	12.3 (8.1 to 16.5)	13.2 (8.5 to 17.8)	12.6 (8.3 to 16.9)	11.2 (6.7 to 15.6)	0.89	0.72	NA	
Regulatory T-cell, % of leucocytes	0.4 (0.2 to 0.5)	0.3 (0.2 to 0.5)	0.4 (0.2 to 0.5)	0.4 (0.3 to 0.6)	0.89	0.54	NA	
Cytotoxic T-cell CD8	2854.2 (2487.9 to 3220.5)	2777.4 (2379.3 to 3175.5)	2935.0 (2558.5 to 3311.5)	2695.0 (2308.1 to 3081.9)	0.31	0.98	NA	
T-helper cell CD4	1724.0 (1458.4 to 2038.0)	1784.0 (1490.3 to 2135.7)	2004.3 (1688.5 to 2379.2)	2099.4 (1761.4 to 2502.4)	0.54	0.02	0.02	
Regulatory T-cell Foxp3	1979.3 (1525.1 to 2568.8)	1732.9 (1309.3 to 2293.6)	2470.3 (1891.9 to 3225.6)	2294.6 (1768.1 to 2978.0)	0.34	0.02	0.09	
Cytotoxic T-cell CD69	1111.2 (763.8 to 1616.5)	1017.0 (676.3 to 1529.5)	1798.5 (1223.3 to 2644.3)	1545.8 (1040.0 to 2297.7)	0.46	0.007	0.03	
T-helper cell CD69	1327.1 (837.9 to 2102.0)	1074.6 (651.2 to 1773.3)	1568.0 (977.1 to 2516.2)	1296.4 (797.0 to 2108.6)	0.32	0.38	0.73	
Regulatory T-cell, CD69	1009.9 (656.3 to 1554.0)	1136.2 (710.4 to 1817.1)	1849.1 (1172.5 to 2916.1)	1644.5 (1068.7 to 2530.6)	0.99	0.02	0.03	
Eosinophil CD69	1681.1 (1117.2 to 2245.0)	1116.0 (552.1 to 1679.9)	1772.8 (1208.9 to 2336.7)	1298.1 (734.2 to 1862.0)	0.39	0.75	NA	
Dendritic cell CD86	154.2 (92.9 to 256.0)	127.8 (78.0 to 209.5)	130.9 (78.9 to 217.3)	139.3 (84.0 to 231.1)	0.75	0.85	NA	

p Values <0.05 are in bold. Values are for mean fluorescence intensity of a given marker unless otherwise noted (eg, %). The ordinal effect p value is NA (not applicable, as analysis not performed) when DE and allergen p value were both greater than 0.1, as dictated by our statistical methods.

DE, diesel exhaust; DEA, diesel exhaust and allergen; DES, diesel exhaust and saline; FAA, filtered air and allergen; FAS, filtered air and saline.

disproportionately distal, due to gravity, in the context of SAC). We found no data in the literature or by expert consultation (personal communication with Dr Nizar Jarjour) for the latter-most speculation, but this would be an important point to explore in future study. Inhaled PM is known to deposit regionally primarily based on size (diameter), with the smallest particles deposited disproportionately in more distal regions, and this may be the reason why synergistic effects were generally more prominent in the BAL (tables 3 and 5).

An important detail in the current study is the requirement that participants be allergen-sensitised rather than asthmatic per se, as reflected by the inclusion criteria and supported by the observation that atopy alone is sufficient to elicit lower airway allergic inflammation on local allergen challenge.³¹ To probe if our observations tended to be greater in atopic asthmatic subjects relative to atopic non-asthmatics, we performed post hoc analysis of the effect of asthmatic status (only 6 of 18 subjects having baseline airway hyper-responsiveness and only three of these six having doctor-diagnosed asthma). We observed no significant effect of asthma status on our outcomes; this is likely due to being underpowered for an analysis focused specifically on asthma status, which was not the intention of our study. Accordingly, we neither expected nor observed any significant change in airway responsiveness given that the minority of our subjects had airway hyper-responsiveness at baseline, which we have already shown is the key predictor of a DE-attributable change.³² The focus on allergen-sensitised participants in our study allows demonstration that even in atopic non-asthmatics, inflammation may be induced in the lower airways without clinical symptoms of airway dysfunction. Although our study was not designed to directly address the issue of ‘atopic march’, a concept whereby atopy may develop into clinical asthma, our findings support this concept, albeit indirectly. Specifically, we speculate that a combined exposure creates an immunological milieu that is capable of enhancing inflammation relevant in asthma development and exacerbations. The impact of combination exposures is particularly pronounced in those atopic individuals without a normally functioning GSTT1.

The significant changes in some of the endpoints in this study merit further interrogation. The augmentation by DE on allergen-induced MCP-1 is relevant given that MCP-1 recruits antigen-presenting cells and T cells to sites of inflammation.³³ Notably, T-helper cells as assessed by flow cytometry were significant in the ordinal analysis and consistent with the pattern for MCP-1 (figure 3), although activity in DCs was not increased (table 4).

Notably, those deficient in GSTT1 showed increased activation of cytotoxic T cells only in the context of DE plus allergen, suggesting that there are important exposure–exposure–gene interactions that may be missed without detailed probing. Similarly, the finding that IL-5 was increased significantly only in those deficient in GSTT1 is interesting in light of prior nasal data¹⁶ in which allergen-induced IL-5 was significantly enhanced by DE particles, but GSTT1 status was not examined. Given the literature on the importance of the GST family in responding to oxidative insults including air pollutants like ozone,³⁴ our findings on GSTT1 are consistent in the context of air pollution;²⁰ we cannot explain why GSTT1 had more influence than GSTM1, except to note that such inconsistency is common in the air pollution literature when various GST isoforms have been examined.

Considering the effect of single exposures, allergen had a more pronounced effect than DE on the end points examined; allergen independently increased airway neutrophils,

Table 5 Bronchial wash (BW) and bronchoalveolar lavage (BAL) cytokines

	Mean (95% CI)				p Value		
	FAS	DES	FAA	DEA	DE effect	Allergen effect	Ordinal effect
BW							
IL-1Ra	12.6 (6.8 to 23.6)	8.1 (4.0 to 16.3)	19.3 (11.4 to 32.6)	18.2 (10.3 to 32.1)	0.47	0.05	0.13
IL-6	11.8 (4.1 to 33.4)	9.1 (2.5 to 33.0)	16.2 (8.7 to 30.2)	8.6 (4.2 to 17.3)	0.19	0.72	NA
IL-8	33.1 (19.6 to 55.7)	26.0 (15.5 to 43.9)	71.0 (42.7 to 118.0)	71.1 (41.6 to 121.7)	0.61	<0.0001	NS
IP10	165.7 (98.8 to 277.9)	131.3 (76.2 to 226.2)	407.7 (242.7 to 684.9)	250.3 (145.3 to 431.2)	0.08	0.0003	NS
MCP-1	39.4 (23.5 to 66.0)	34.1 (20.3 to 57.1)	58.4 (35.8 to 95.2)	57.7 (34.4 to 96.8)	0.73	0.04	0.10
MIP-1 β	12.1 (6.6 to 22.1)	6.7 (3.8 to 11.7)	11.5 (7.1 to 18.7)	8.8 (5.4 to 14.3)	0.10	0.55	NA
RANTES	7.5 (5.0 to 11.3)	11.0 (6.3 to 19.2)	11.5 (8.1 to 16.3)	9.1 (5.5 to 15.1)	0.80	0.24	NA
BAL							
IL-1Ra	10.1 (5.3 to 19.3)	6.7 (3.5 to 12.9)	8.1 (4.7 to 14.0)	12.5 (7.7 to 20.2)	0.68	0.50	0.54
IL-5	1.12 (0.47 to 1.05)	0.53 (1.05 to 2.46)	3.47 (1.15 to 7.95)	4.78 (1.87 to 10.7)	0.78	0.01	0.006
IL-6	16.1 (6.9 to 37.5)	15.1 (5.6 to 40.9)	17.5 (9.1 to 33.8)	16.0 (9.0 to 28.5)	0.82	0.85	NA
IL-8	22.5 (13.7 to 37.0)	17.5 (10.5 to 29.1)	27.5 (16.7 to 45.3)	39.3 (23.9 to 64.6)	0.78	0.02	0.03
IL-13	4.5 (3.1 to 6.7)	4.8 (3.2 to 7.1)	5.8 (4.1 to 8.4)	6.2 (4.5 to 8.5)	0.74	0.14	NA
IL-15	5.1 (3.7 to 7.0)	3.9 (2.9 to 5.3)	2.7 (1.9 to 3.6)	5.4 (4.0 to 7.4)	0.03	0.44	NS
CCL20	10.1 (4.8 to 21.1)	6.2 (3.0 to 13.0)	23.6 (11.3 to 49.3)	21.6 (10.4 to 45.1)	0.43	0.006	NS
ECP	7.1 (3.7 to 13.5)	7.6 (4.0 to 14.5)	35.0 (18.3 to 66.9)	58.7 (30.7 to 112.1)	0.22	<0.0001	<0.0001
GCSF	43.3 (26.2 to 71.8)	27.8 (16.5 to 46.7)	71.7 (43.3 to 118.8)	71.1 (42.9 to 117.8)	0.37	0.005	NS
IFN- γ	3.8 (2.4 to 6.0)	5.9 (3.8 to 9.3)	4.1 (2.6 to 6.4)	5.6 (3.6 to 8.8)	0.06	0.95	NS
IP10	371.2 (219.1 to 629.0)	261.3 (150.5 to 453.7)	925.1 (546.0 to 1567.6)	846.4 (493.6 to 1451.4)	0.32	<0.0001	NS
MCP1	37.4 (22.7 to 61.6)	37.2 (22.3 to 62.0)	71.9 (43.7 to 118.3)	129.3 (78.5 to 212.7)	0.19	<0.0001	<0.0001
MIP-1 β	19.7 (9.4 to 41.3)	11.1 (5.9 to 20.9)	12.9 (7.5 to 22.4)	19.9 (12.1 to 32.6)	0.57	0.57	NA
RANTES	9.2 (6.5 to 13.0)	8.2 (5.6 to 11.9)	7.7 (5.4 to 10.9)	10.9 (7.8 to 15.2)	0.37	0.76	NA
TNF- α	7.8 (4.7 to 12.9)	16.2 (8.6 to 30.3)	6.4 (4.8 to 8.6)	8.3 (6.3 to 11.0)	0.10	0.15	NA
VEGF	40.2 (23.3 to 69.5)	38.4 (21.4 to 68.7)	25.1 (12.4 to 50.8)	46.9 (24.5 to 89.8)	0.44	0.61	NA

All values are in pg/mL except in the case of ECP, which is in ng/mL; p values ≤ 0.05 are in bold.

DE and allergen p value are both greater than 0.1, as dictated by statistical methods.

CCL20, chemokine (C-C motif) ligand 20; DE, diesel exhaust; DEA, diesel exhaust and allergen; DES, diesel exhaust and saline; FAA, filtered air and allergen; FAS, filtered air and saline; GCSF, granulocyte-colony stimulating factor; IFN, interferon; IL, interleukin; IP10, interferon gamma-induced protein 10; MCP, monocyte chemoattractant protein; MIP, major intrinsic protein; NA, not applicable; RANTES, regulated on activation, normal T cell expressed and secreted; TNF, tumour necrosis factor; VEGF, vascular endothelial growth factor.

eosinophils, IL-1Ra, IL-8, CCL20, ECP, GCSF, IP10, MCP-1 and CD4 expression in helper T cells. None of these changes are surprising, given known effects of allergen in the airway, and they validate our SAC model. It may be surprising that IL-5 did not significantly increase in response to allergen, but this appears to be due to large variability in response (although the absolute change (2.3–51.2 pg/mL) is very similar to that observed in a prior investigation).³⁵ A unique finding, not previously reported in the context of human SAC models, is the allergen-induced increase in Foxp3 expression in regulatory T cells. Interestingly, DE did not have an independent effect on regulatory T cells. This contrasts with the study of Nadeau *et al*,³⁶ where a cross-sectional analysis showed impaired T-regulatory cell function in those living in a region with higher ambient ozone and PM levels. The contrast likely has to do with differences in exposure frequency and/or duration, tissue specificity of exposure and sample collection, and the difficulty in controlling for allergen co-exposure in the observational setting, highlighting the need for more research in this area. Our findings of diesel-induced decrease in DC and macrophage activation is built on previous findings in a model that did not include allergen.³⁷

Our blinded crossover study design has several strengths. Inhaled DE is an improvement over studies using instilled (rather than inhaled) particulate, often at unrealistic concentrations, or narrow and/or artificially generated fractions of the ambient pollutant mix.³⁸ Bronchoscopy with SAC is novel in this context

(never before applied to a human model of DE) and advantageous because it allows us to obtain, *within the same bronchoscopy*, samples reflecting exposure plus saline and exposure plus allergen. We had 50% more power than a similar study recently published using spark-generated ultrafine particles; this increased power may be an explanation to our finding effects in end points (such as IL-5 and IL-8) that were unchanged in that study.³⁸ An additional, or alternative, explanation for our distinct findings may be the use of diluted and aged DE, a more realistic reflection of traffic-related air pollution, which includes nitrogen dioxide (itself known to enhance eosinophilia at concentrations similar to those we employed).³⁹ We previously saw effects of combined exposure to allergen and combustion products on the chronic⁴⁰ timescale but now have contributed to understanding more acute dynamics and thus appreciate the effects of common co-exposures in more detail. Our 48 h delay between exposure and airway sampling may be advantageous in two respects: (1) it provides insight into effects beyond the more typical 24 h sampling window; (2) it may decrease any potential sequence-related effect (as reported by others;³⁸ our *post hoc* analysis revealed no such effect on the end points we evaluated).

Our study also has important limitations. The 48 h delay between exposure and lung sampling, while helpful for capturing changes related to adaptive immunity, may miss more immediate effects that peak earlier in the time course. However, the changes noted at 48 h are remarkable in their persistence at post-exposure time points later than those typically studied in

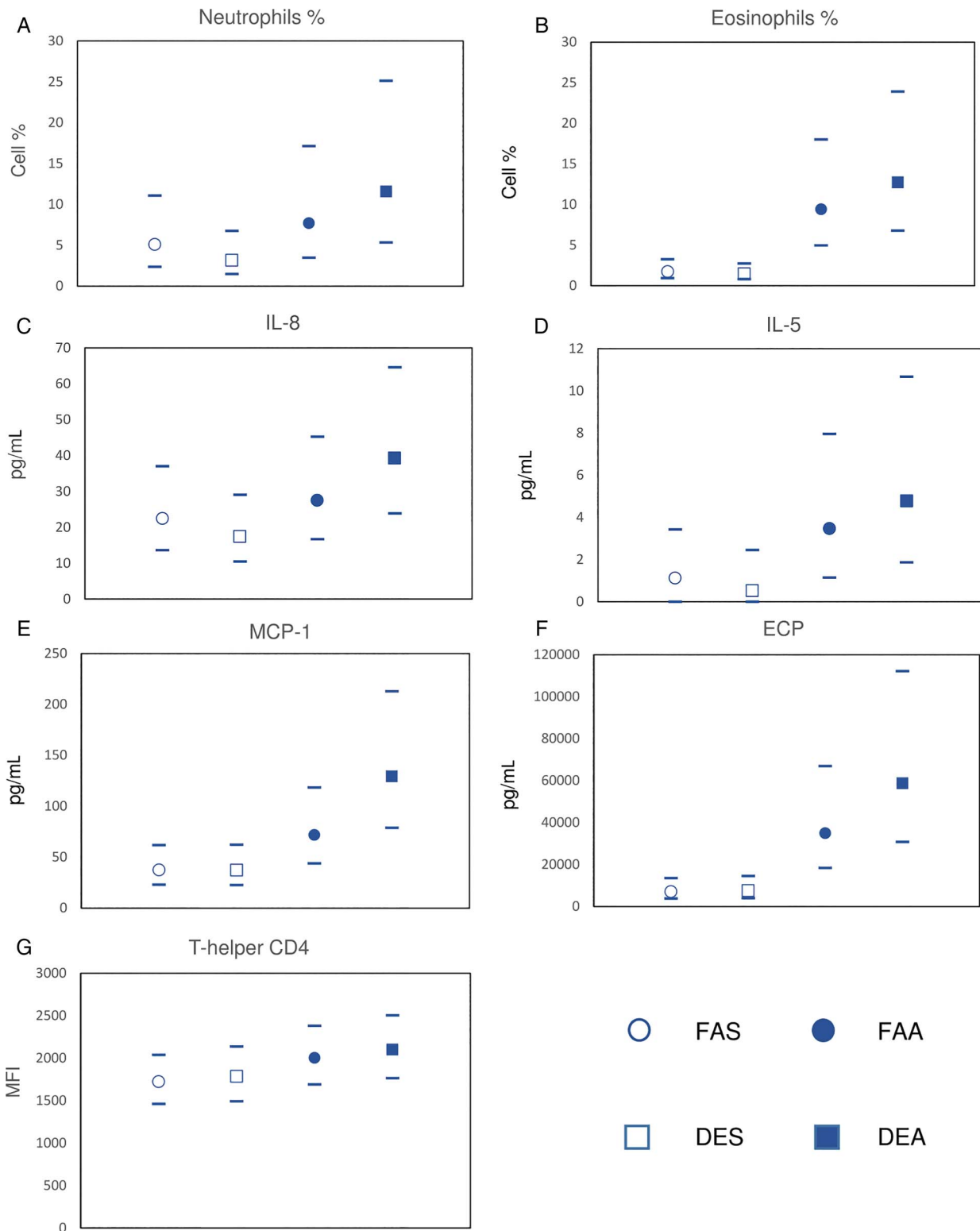


Figure 3 End points in bronchoalveolar lavage with positive linear ordinal effect, separated by exposure combinations as designated (filtered air and saline (FAS); diesel exhaust and saline (DES); filtered air and allergen (FAA); diesel exhaust and allergen (DEA)). Circles and squares represent means; whiskers are the upper and lower bounds of the 95% CI. IL, interleukin; MFI, mean fluorescent intensity.

such controlled experiments. Furthermore, the segmental allergen instillation, though methodologically efficient and enables the study of airway cells otherwise not accessible during a natural allergen-induced exacerbation, is still not entirely realistic; the segment receiving the challenge dose likely has a higher

than physiological dose, while at the same time the whole lung is receiving a lower than physiological dose. We also recognise that since we excluded those with more severe disease, it remains unclear to what extent our findings would be similar in those with more significant clinical airways disease.

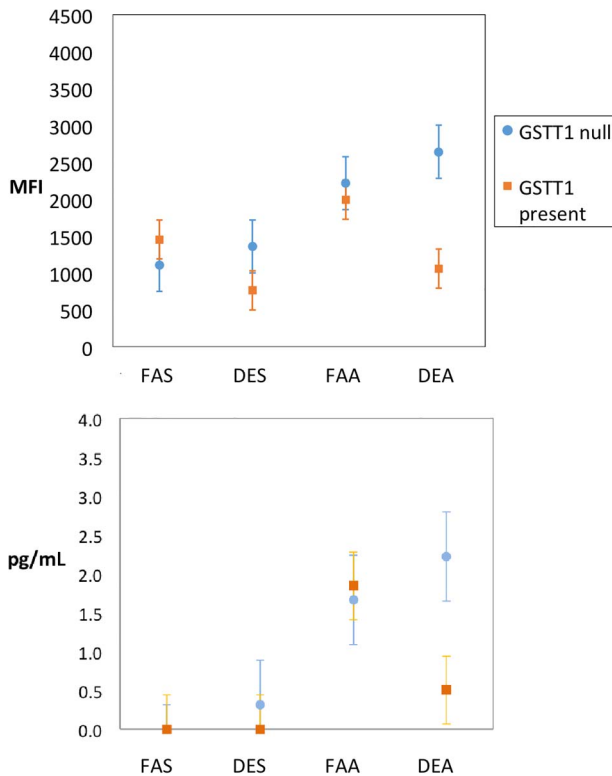


Figure 4 Levels of IL-5 (A) and cytotoxic T-cell activity (B) in bronchoalveolar lavage according to *GSTT1* genotype and separated by exposure combinations as designated (filtered air and saline (FAS); diesel exhaust and saline (DES); filtered air and allergen (FAA); diesel exhaust and allergen (DEA)). Circles represent means; whiskers are the upper and lower bounds of the 95% CI. IL, interleukin; MFI, mean fluorescent intensity.

In summary, we have employed a novel protocol that could exploit several advantages in terms of co-exposure, sample recovery and timing. We used a chamber exposure to DE with SAC and bronchoscopy to assess the ability of DE inhalation to augment allergen-induced allergic inflammation in atopic individuals. We have demonstrated important links between allergic sensitisation, air pollution and increased susceptibility to DE. Unfortunately, the global emissions problem is not going away.⁴¹ Furthermore, global climate change is leading to increases in both PM and allergens,⁴² thus potentially compounding the adverse effects of dual exposure to these inhalants. With this step in understanding the complexity of the in vivo human reaction to multiple exposures, our study serves a critical public health objective, namely protecting vulnerable populations from air pollution. This report contributes evidence of susceptibility and further supports biological plausibility of epidemiological findings showing increased risk to atopic individuals.

Acknowledgements The following individuals graciously offered valuable discussions at various stages of the project: Drs Michael Brauer, Sarah Charlesworth, Ramin Dastanpour, Mark FitzGerald, Stuart Turvey and Zhihong Zhang. The authors would also like to acknowledge the subjects who participated in the research study for their commitment to medical research.

Contributors CC conceived of and recruited subjects for the study. CC, NA, AB, MP, TS and JH refined the details of the methodological approach. MP and SWW performed the analyses. CC primarily wrote the manuscript. All authors read, edited and approved the final manuscript.

Funding This study was supported by the Canadian Institutes for Health Research (MOP 123319), WorkSafe BC (RG2011-OG07) and AllerGen NCE (GxE4).

Competing interests None declared.

Ethics approval University of British Columbia Clinical Research Ethics Board.

Provenance and peer review Not commissioned; externally peer reviewed.

REFERENCES

- Friedman MS, Powell KE, Hutwagner L, *et al.* Impact of changes in transportation and commuting behaviors during the 1996 Summer Olympic Games in Atlanta on air quality and childhood asthma. *JAMA* 2001;285:897–905.
- Atkinson RW, Anderson HR, Sunyer J, *et al.* Acute effects of particulate air pollution on respiratory admissions: results from APHEA 2 project. *Air Pollution and Health: a European Approach. Am J Respir Crit Care Med* 2001;164(10 Pt 1):1860–6.
- Lim SS, Vos T, Flaxman AD, *et al.* A comparative risk assessment of burden of disease and injury attributable to 67 risk factors and risk factor clusters in 21 regions, 1990–2010: a systematic analysis for the Global Burden of Disease Study 2010. *Lancet* 2012;380:2224–60.
- USEPA. National Air Pollutant Emission Trends, 1990–1998. Secondary National Air Pollutant Emission Trends, 1990–1998, 2000. <http://www.epa.gov/ttn/chieftrends/trends98/trends98.pdf> (Table 3–6, p 3–14).
- McCreanor J, Cullinan P, Nieuwenhuijsen MJ, *et al.* Respiratory effects of exposure to diesel traffic in persons with asthma. *N Engl J Med* 2007;357:2348–58.
- Sjöbring U, Taylor JD, eds. *Models of exacerbations in asthma and COPD*. Basel: Karger, 2007.
- Shult PA, Graziano FM, Wallow IH, *et al.* Comparison of superoxide generation and luminol-dependent chemiluminescence with eosinophils and neutrophils from normal individuals. *J Lab Clin Med* 1985;106:638–45.
- Liu LY, Jarjour NN, Busse WW, *et al.* Chemokine receptor expression on human eosinophils from peripheral blood and bronchoalveolar lavage fluid after segmental antigen challenge. *J Allergy Clin Immunol* 2003;112:556–62.
- Namork E, Johansen BV, Løvik M. Detection of allergens adsorbed to ambient air particles collected in four European cities. *Toxicol Lett* 2006;165:71–8.
- Ghiani A, Aina R, Asero R, *et al.* Ragweed pollen collected along high-traffic roads shows a higher allergenicity than pollen sampled in vegetated areas. *Allergy* 2012;67:887–94.
- Motta AC, Marliere M, Peltre G, *et al.* Traffic-related air pollutants induce the release of allergen-containing cytoplasmic granules from grass pollen. *Int Arch Allergy Immunol* 2006;139:294–8.
- Takizawa H, Abe S, Okazaki H, *et al.* Diesel exhaust particles upregulate eotaxin gene expression in human bronchial epithelial cells via nuclear factor-kappa B-dependent pathway. *Am J Physiol Lung Cell Mol Physiol* 2003;284:L1055–62.
- Yanagisawa R, Takano H, Inoue KI, *et al.* Components of diesel exhaust particles differentially affect Th1/Th2 response in a murine model of allergic airway inflammation. *Clin Exp Allergy* 2006;36:386–95.
- Ichinose T, Takano H, Miyabara Y, *et al.* Enhancement of antigen-induced eosinophilic inflammation in the airways of mast-cell deficient mice by diesel exhaust particles. *Toxicology* 2002;180:293–301.
- Diaz-Sanchez D, Dotson AR, Takenaka H, *et al.* Diesel exhaust particles induce local IgE production in vivo and alter the pattern of IgE messenger RNA isoforms. *J Clin Invest* 1994;94:1417–25.
- Diaz-Sanchez D, Tsiang A, Fleming J, *et al.* Combined diesel exhaust particulate and ragweed allergen challenge markedly enhances human in vivo nasal ragweed-specific IgE and skews cytokine production to a T helper cell 2-type pattern. *J Immunol* 1997;158:2406–13.
- Hirota JA, Gold MJ, Hiebert PR, *et al.* The NLRP3 inflammasome/IL-1RI axis mediates innate immune but not adaptive immune responses following PM exposure to particulate matter under 10 µm. *Am J Respir Cell Mol Biol* 2015;52:96–105.
- Gilliland FD, Li YF, Gong H Jr, *et al.* Glutathione S-transferases M1 and P1 prevent aggravation of allergic responses by second hand smoke. *Am J Respir Crit Care Med* 2006;174:1335–41.
- Gilliland FD, Li YF, Saxon A, *et al.* Effect of glutathione-S-transferase M1 and P1 genotypes on xenobiotic enhancement of allergic responses: randomised, placebo-controlled crossover study. *Lancet* 2004;363:119–25.
- Ren C, Park SK, Vokonas PS, *et al.* Air pollution and homocysteine: more evidence that oxidative stress-related genes modify effects of particulate air pollution. *Epidemiology* 2010;21:198–206.
- Birger N, Gould T, Stewart J, *et al.* The Air Pollution Exposure Laboratory (APEL) for controlled human exposure to diesel exhaust and other inhalants: characterization and comparison to existing facilities. *Inhal Toxicol* 2011;23:219–25.
- Carlsten C, Oron AP, Curtiss H, *et al.* Symptoms in response to controlled diesel exhaust more closely reflect exposure perception than true exposure. *PLoS One* 2013;8:e83573.
- Ewan PW, Coote D. Evaluation of a capsulated hydrophilic carrier polymer (the ImmunoCAP) for measurement of specific IgE antibodies. *Allergy* 1990;45:22–9.
- Cheng Y, Li Y-S. Influences of traffic emissions and meteorological conditions on ambient PM10 and PM2.5 levels at a highway toll station. *Aerosol and Air Qual Res* 2010;10:456–62.

- 25 Bathmanabhan S, Madanayak S. Analysis and interpretation of particulate matter—PM10, PM2.5 and PM1 emissions from the heterogeneous traffic near an urban roadway. *Atmos Poll Res* 2010;1:184–94.
- 26 Guarnieri M, Balmes JR. Outdoor air pollution and asthma. *Lancet* 2014;383:1581–92.
- 27 OECD. OECD environmental outlook to 2050: the consequences of inaction. OECD Publishing, 2012.
- 28 USEPA. Health Assessment Document for Diesel Engine Exhaust. Secondary Health Assessment Document for Diesel Engine Exhaust, 2002. <http://www.epa.gov/ttn/atw/diesel/final.pdf>
- 29 Jayaratne ER, He C, Ristovski ZD, *et al.* A comparative investigation of ultrafine particle number and mass emissions from a fleet of on-road diesel and CNG buses. *Environ Sci Technol* 2008;42:6736–42.
- 30 Stenfors N, Nordenhall C, Salvi SS, *et al.* Different airway inflammatory responses in asthmatic and healthy humans exposed to diesel. *Eur Respir J* 2004;23:82–6.
- 31 Braunstahl GJ, Overbeek SE, Fokkens WJ, *et al.* Segmental bronchoprovocation in allergic rhinitis patients affects mast cell and basophil numbers in nasal and bronchial mucosa. *Am J Respir Crit Care Med* 2001;164:858–65.
- 32 Carlsten C, MacNutt MJ, Zhang Z, *et al.* Anti-oxidant N-acetylcysteine diminishes diesel exhaust-induced increased airway responsiveness in person with airway hyper-reactivity. *Toxicol Sci* 2014;139:479–87.
- 33 Radulovic K, Rossini V, Manta C, *et al.* The early activation marker CD69 regulates the expression of chemokines and CD4 T cell accumulation in intestine. *PLoS One* 2013;8:e65413.
- 34 Alexis NE, Lay JC, Zhou H, *et al.* The glutathione-S-transferase mu 1 (GSTM1) null genotype and increased neutrophil response to low-level ozone (0.06 ppm). *J Allergy Clin Immunol* 2013;131:610–12.
- 35 Becky Kelly EA, Busse WW, Jarjour NN. A comparison of the airway response to segmental antigen bronchoprovocation in atopic asthma and allergic rhinitis. *J Allergy Clin Immunol* 2003;111:79–86.
- 36 Nadeau K, McDonald-Hyman C, Noth EM, *et al.* Ambient air pollution impairs regulatory T-cell function in asthma. *J Allergy Clin Immunol* 2010;126:845–52.e10.
- 37 Rudell B, Blomberg A, Helleday R, *et al.* Bronchoalveolar inflammation after exposure to diesel exhaust: comparison between unfiltered and particle trap filtered exhaust. *Occup Environ Med* 1999;56:527–34.
- 38 Schaumann F, Frömke C, Dijkstra D, *et al.* Effects of ultrafine particles on the allergic inflammation in the lung of asthmatics: results of a double-blinded randomized cross-over clinical pilot study. *Part Fibre Toxicol* 2014;11:39.
- 39 Ezratty V, Guillosoy G, Neukirch C, *et al.* Repeated nitrogen dioxide exposures and eosinophilic airway inflammation in asthmatics: a randomized crossover study. *Environ Health Perspect* 2014;122:850–5.
- 40 Carlsten C, Brauer M, Dimich-Ward H, *et al.* Combined exposure to dog and indoor pollution: incident asthma in a high-risk birth cohort. *Eur Respir J* 2011;37:324–30.
- 41 Yan F, Winijkul E, Streets DG, *et al.* Global emission projections for the transportation sector using dynamic technology modeling. *Atmos Chem Phys* 2013;13:23373–419.
- 42 Pinkerton K, Rom W, Carlsten C, *et al.* Climate change and global public health. *Turk Thorax J* 2013;14:115–22.

Correction

Carlsten C, Blomberg A, Pui M, *et al.* Diesel exhaust augments allergen-induced lower airway inflammation in allergic individuals: a controlled human exposure study. *Thorax* 2016;71:35-44. doi: 10.1136/thoraxjnl-2015-207399.

An incorrect figure 2 was published with the paper. Please find the correct figure now provided.

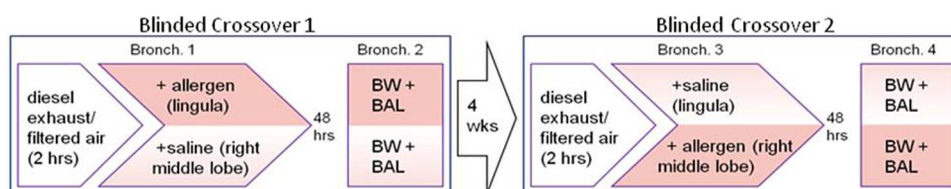


Figure 2 Outline of sequence of exposure and sampling. All subjects received DE and FA, separated by washout; subjects were randomised to received either DE or FA first. Subjects were also randomized to receive allergen or saline first in the lingula (figure shows one of two possibilities therein). BAL, bronchoalveolar lavage; BW, bronchial wash; DE, diesel exhaust; FA, filtered air.

Thorax 2016;71:385. doi:10.1136/thoraxjnl-2015-207399corr1



CrossMark