



OPEN ACCESS

ORIGINAL ARTICLE

# Association of diabetes and tuberculosis: impact on treatment and post-treatment outcomes

María Eugenia Jiménez-Corona,<sup>1</sup> Luis Pablo Cruz-Hervert,<sup>2</sup> Lourdes García-García,<sup>2</sup> Leticia Ferreyra-Reyes,<sup>2</sup> Guadalupe Delgado-Sánchez,<sup>2</sup> Miriam Bobadilla-del-Valle,<sup>3</sup> Sergio Canizales-Quintero,<sup>2</sup> Elizabeth Ferreira-Guerrero,<sup>2</sup> Renata Báez-Saldaña,<sup>2</sup> Norma Téllez-Vázquez,<sup>2</sup> Rogelio Montero-Campos,<sup>2</sup> Norma Mongua-Rodríguez,<sup>2</sup> Rosa Areli Martínez-Gamboa,<sup>3</sup> José Sifuentes-Osornio,<sup>3</sup> Alfredo Ponce-de-León<sup>3</sup>

► Additional material is published online only. To view please visit the journal online (<http://dx.doi.org/10.1136/thoraxjnl-2012-201756>).

<sup>1</sup>Laboratorios de Biológicos y Reactivos de México (BIRMEX), Ciudad de México, Distrito Federal México, México

<sup>2</sup>Instituto Nacional de Salud Pública, Cuernavaca, Morelos, México

<sup>3</sup>Instituto Nacional de Ciencias Médicas y de Nutrición Salvador Zubirán (INCMNSZ) Vasco de Quiroga 15, Ciudad de México, Distrito Federal México, México

## Correspondence to

Dr Lourdes García-García, Instituto Nacional de Salud Pública, Av. Universidad # 655, Col. Sta. María Ahuacatlán, Cuernavaca, Morelos C.P. 62100, México; [garcigarmil@gmail.com](mailto:garcigarmil@gmail.com)

Received 29 February 2012

Revised 15 October 2012

Accepted 24 November 2012

Published Online First

18 December 2012

## ABSTRACT

**Objective** To determine the clinical consequences of pulmonary tuberculosis (TB) among patients with diabetes mellitus (DM).

**Methods** We conducted a prospective study of patients with TB in Southern Mexico. From 1995 to 2010, patients with acid-fast bacilli or *Mycobacterium tuberculosis* in sputum samples underwent epidemiological, clinical and microbiological evaluation. Annual follow-ups were performed to ascertain treatment outcome, recurrence, relapse and reinfection.

**Results** The prevalence of DM among 1262 patients with pulmonary TB was 29.63% (n=374). Patients with DM and pulmonary TB had more severe clinical manifestations (cavities of any size on the chest x-ray, adjusted OR (aOR) 1.80, 95% CI 1.35 to 2.41), delayed sputum conversion (aOR 1.51, 95% CI 1.09 to 2.10), a higher probability of treatment failure (aOR 2.93, 95% CI 1.18 to 7.23), recurrence (adjusted HR (aHR) 1.76, 95% CI 1.11 to 2.79) and relapse (aHR 1.83, 95% CI 1.04 to 3.23). Most of the second episodes among patients with DM were caused by bacteria with the same genotype but, in 5/26 instances (19.23%), reinfection with a different strain occurred.

**Conclusions** Given the growing epidemic of DM worldwide, it is necessary to add DM prevention and control strategies to TB control programmes and vice versa and to evaluate their effectiveness. The concurrence of both diseases potentially carries a risk of global spreading, with serious implications for TB control and the achievement of the United Nations Millennium Development Goals.

## INTRODUCTION

The WHO has identified diabetes mellitus (DM) as a global epidemic, mostly affecting low- and middle-income countries where 80% of all deaths from DM occur.<sup>1</sup> Simultaneously, tuberculosis (TB) continues to be a major cause of death worldwide despite the fact that the epidemic appears to be on the verge of a decline.<sup>2</sup> Many studies have explored the relationship between DM and TB, including a recent systematic review which showed that the risk of TB among people with DM is three times higher than in people without DM.<sup>3</sup> Recently, WHO and the International Union Against TB and Lung Disease (Union) have acknowledged the need for international guidelines on the joint management and control of TB and DM and have published a

## Key messages

### What is the key question?

- What are the treatment and post-treatment outcomes in patients with pulmonary tuberculosis (TB) and diabetes mellitus (DM) in a high DM/TB setting?

### What is the bottom line?

- Although data indicate that patients with TB and DM are probably more likely to experience negative outcomes, unsolved questions remain due to methodological limitations of previous studies. Furthermore, the frequency of relapses and reinfections is unknown.

### Why read on?

- We document that patients with TB/DM have more severe treatment and post-treatment outcomes. Using molecular tools, we demonstrated that subsequent episodes among patients with DM are more likely to be due to the same bacteria as the previous episode. However, the occurrence of exogenous reinfection in one-fifth of the cases merits further consideration.

provisional collaborative framework for the care and control of both diseases.<sup>4</sup>

In this study we address some of the knowledge gaps and research needs that have recently been identified on the association between these two diseases.<sup>5–6</sup> Since 1995 we have been conducting a population-based prospective study of pulmonary TB in Southern Mexico where almost one-third of TB patients have been previously diagnosed with DM.<sup>7</sup> The main objective of this study was to describe the clinical manifestations and treatment and post-treatment outcomes in patients with DM and bacteriologically confirmed pulmonary TB compared with TB patients without this diagnosis.

## METHODS

### Study population and enrolment

We conducted a prospective study of patients with TB. Briefly, the study area includes 12



► <http://dx.doi.org/10.1136/thoraxjnl-2012-202976>

**To cite:** Jiménez-Corona ME, Cruz-Hervert LP, García-García L, et al. *Thorax* 2013;**68**:214–220.

municipalities in the Orizaba Health Jurisdiction in Veracruz State, Mexico with an extent of 618.11 km<sup>2</sup> and 413 223 inhabitants, 26.3% of whom live in rural communities.<sup>8</sup>

Between March 1995 and April 2010 we performed passive case finding supported by community health workers and screened persons aged >15 years who reported coughing for >15 days. Consenting patients with acid-fast bacilli or *Mycobacterium tuberculosis* in sputum samples were consecutively recruited over the 15 years and underwent epidemiological, clinical (standardised questionnaire, physical examination, chest radiography and HIV test), microbiological and molecular evaluations. We performed cultures on smear-positive sputum samples from 1995 to 2000, on all sputum samples (both smear-positive and smear-negative) from 2000 to 2005, and on sputum samples from all previously treated TB patients as well as any new patients with TB considered at high risk of having drug-resistant TB from 2005 to 2010. Patients were considered to have DM if they had received a previous diagnosis from a physician or oral hypoglycaemic medication or insulin administration or treatment. Chest x-rays were assessed independently by certified radiologists. Staff classifying study outcomes were not blinded while laboratory personnel and radiologists were blinded to patients' DM status. Personnel were trained in the administration of standardised questionnaires that included previously validated questions. Community health workers ascertained the 'homelessness' of participants.

Following the guidelines of Mexico's National TB Control Program, between 1995 and 1998 new cases received 2 months of isoniazid (H), rifampin (R) pyrazinamide (Z) plus 4 months of HR (2HRZ/4HR) and retreatment cases also received either ethambutol (E) or streptomycin (S). After 1998 the local health jurisdiction adopted the WHO standard regimen of initiating therapy with four drugs (2HRZE/4HR) for newly diagnosed patients and five drugs (2HRZES/1HRZE/5HRE) for previously treated patients. After 2000, patients harbouring isolates resistant to both isoniazid and rifampin were treated with the support of the Green Light Committee with a second-line standardised regime using at least four drugs highly likely to be effective for 18–24 months after culture conversion.

We used the operational definitions of the programme for treatment outcomes except that defaulting and death were defined according to international definitions (table 1).<sup>9 10</sup>

After treatment was completed, patients were visited annually and standardised questionnaires, smears and *M tuberculosis* cultures were undertaken to investigate recurrences, relapses,<sup>10</sup> IS6110 based-reinfections and death due to TB,<sup>11</sup> as defined in table 1.

#### HIV testing

Voluntary HIV testing and counselling was offered to all participants. The results were given to the patient and he/she was referred to receive appropriate treatment. Testing for HIV was done using two different tests. All positive results were confirmed by western blot analysis.<sup>12</sup>

#### Measurement of glucose concentration

In 1166 of the 1262 patients (92.39%) in whom a serum sample obtained after the diagnosis of TB was available, glucose determination was performed using a Synchron CX5 Delta analyser (Beckman Coulter). Glucose levels  $\geq 126$  mg/dl in fasting samples or  $\geq 200$  mg/dl for random samples were considered diagnostic.<sup>13</sup>

#### Mycobacteriology and genotyping

Sputum samples were processed for *M tuberculosis* following standardised procedures.<sup>14</sup> Isolates were genotyped and compared using IS6110-based restriction fragment length polymorphisms (RFLP) and spoligotyping if the IS6110 RFLP patterns of the isolate had <6 bands.<sup>15</sup> Patients were considered 'clustered' if  $\geq 2$  isolates from different patients were identified within 12 months of each other and had  $\geq 6$  IS6110 bands in an identical pattern, or <6 bands with identical IS6110 RFLP patterns and a spoligotype with the same spacer oligonucleotides. Cases with a unique genotype pattern (different from all other fingerprints obtained from isolates in the study population) and the first case diagnosed in each cluster probably arose from the reactivation of latent infection caused by *M tuberculosis* strains acquired at a different time or place.<sup>16</sup>

#### Statistical analysis

Bivariate and multivariate analyses were used to test for differences in sociodemographic, behavioural and clinical characteristics between patients with and without DM. Rural residence and homelessness were defined as in the Population and

**Table 1** Definition of treatment outcomes

Outcomes at the end of treatment	
Failure	AFB microscopies or cultures positive at 5 months or later during treatment
Cure	Treatment completed with disappearance of signs and symptoms and $\geq 2$ AFB smears or cultures with negative results at the end of therapy
Treatment completion	Completion of treatment without meeting the criteria to be classified as a cure or failure
Death during treatment	Death due to any cause during treatment
Default	Interruption of treatment for $\geq 2$ consecutive months
Transfer out	Patient transferred to another institution outside the study region
Outcomes after treatment was completed	
Recurrence	A second or subsequent episode of TB confirmed by AFB smear or culture in a patient with a history of prior treatment
Relapse	TB disease confirmed by AFB smear or culture that occurred after a patient was considered to have completed treatment or to have been cured. Relapse patients are included within recurrent TB
Reinfections	Subsequent TB episodes (recurrences and relapses) with the same genotype: $\geq 6$ IS6110 bands in an identical pattern or <6 bands with identical IS6110 RFLP patterns and a spoligotype with the same spacer oligonucleotides
Deaths after TB treatment was completed	
Death due to TB	Deaths were attributed to TB based on two of the following: death certificate with TB as the main cause of death; interview with a close caregiver who identified TB as a probable cause of death; or positive AFB smear or culture at the time of death

AFB, acid-fast bacilli; RFLP, restriction fragment length polymorphisms; TB, tuberculosis.

Household Census.<sup>8</sup> Usage of alcohol (>10 drinks per week), smoking (>10 cigarettes per week), usage of illegal drugs, (marijuana, cocaine and its derivatives, heroin, methamphetamines, hallucinogens, inhalants and other drugs) were defined as in the National Survey of Addictions.<sup>17</sup>

Drug susceptibilities and genotype patterns of *M tuberculosis* isolates from patients with and without DM were compared. To evaluate healthcare access we assessed the distance to the nearest health centre and the time elapsed between the onset of symptoms and the beginning of treatment. Fingerprints obtained from first and second or subsequent episodes were compared among recurring and relapsing patients.

In patients with pulmonary TB, associations between DM and the severity of disease (as indicated by cavities of any size on chest x-rays), delayed sputum conversion (after  $\geq 60$  days) and treatment failure were investigated by multivariate unconditional logistic regression. Variables with  $p \leq 0.20$  in the bivariate analysis and biological plausibility were included in multivariate models. We estimated the OR and 95% CIs and identified the covariates that were independently associated with each outcome. We estimated adjusted HRs and 95% CI using Cox proportional hazards models to assess the association of DM with recurrence and relapse. In these models, the outcome was the time to diagnosis of recurrence or relapse from treatment completion of the previous episode in years. The proportional hazards assumption was verified by introducing terms for the interaction between time and covariates into the model. Since

serum glucose determination was available for 1166 patients (92.32%) after the diagnosis of TB, we reanalysed the data adding the 26 patients (6.5%) who were unaware of their diagnosis of DM until after their diagnosis of TB. Kaplan–Meier curves were used to assess survivorship among patients with and without DM and a log-rank test was used to detect significant differences. All data analysis was performed using Stata V.10.0.

## RESULTS

### Characteristics of patients with TB according to DM

During the 15-year study period we recruited 1262 patients with pulmonary TB. Of these, 29.63% (374/1262) were diagnosed with DM prior to TB diagnosis. A comparison of patients with and without DM is shown in table 2. Patients with DM were more likely to be female, older and from a higher socioeconomic level (as indicated by household characteristics), with greater access to Social Security and more years of formal education. Illegal drug and alcohol usage, homelessness and HIV infection were more frequent among subjects without DM. Retreated DM patients were more likely to harbour isolates with joint resistance to isoniazid and rifampin. Patients with DM were more likely to have TB reactivation as indicated by unique IS6110 fingerprints.

Clinical evaluation showed that patients with DM had more severe clinical manifestations (ie, higher frequency of cavities on chest x-rays). This observation was confirmed when the association between previous DM diagnosis and cavities on chest

**Table 2** Characteristics of patients with pulmonary TB (Orizaba, Veracruz, Mexico, 1995–2010)

Characteristic	Total number of TB patients n/total (%)	TB patients with DM n/total (%)	TB patients without DM n/total (%)	p Value*
Female	532/1262 (42.16)	180/374 (48.13)	352/888 (39.64)	0.005
Mean (SD) age (years)	45.32 (18.18)	53.51 (12.81)	41.9 (18.99)	<0.001†
>6 years of formal schooling	846/1260 (67.14)	271/373 (72.65)	575/887 (64.83)	0.007
Household with earthen floor	267/1184 (22.55)	45/350 (12.86)	222/834 (26.62)	<0.001
Rural residence	148/1232 (12.01)	31/366 (8.47)	117/866 (13.51)	0.013
Median (IQR) distance to nearest health centre (metres)	705.15 (424.19–1555.22)	725.5 (426.98–1025.30)	696.91 (422.40–1084.94)	0.774‡
Access to Social Security	451/1262 (35.74)	184/374 (49.20)	267/888 (30.07)	<0.001
>10 drinks per week	282/1259 (22.40)	60/372 (16.13)	222/887 (25.03)	0.001
>10 cigarettes per week	106/1259 (8.42)	28/373 (7.51)	78/886 (8.80)	0.449
Use of illegal drugs	64/1261 (5.08)	6/373 (1.61)	58/888 (6.53)	<0.001
Homelessness or residing in shelters	46/1257 (3.66)	4/374 (1.07)	42/883 (4.76)	0.001
HIV infection	24/1228 (2.00)	2/362 (0.55)	22/866 (2.54)	0.022
Previous TB treatment	153/1261 (12.13)	51/373 (13.67)	102/888 (11.49)	0.278
>10 bacilli per oil immersion field	300/1262 (23.77)	77/374 (20.59)	223/888 (25.11)	0.085
Resistance to any drug§	190/919 (20.67)	72/315 (22.86)	118/604 (19.54)	0.238
Joint resistance to isoniazid and rifampin	43/919 (4.68)	17/315 (5.40)	26/604 (4.30)	0.457
Joint resistance to isoniazid and rifampin in new cases	17/796 (2.14)	4/275 (1.45)	13/521 (2.5)	0.334
Joint resistance to isoniazid and rifampin in retreated cases	26/122 (21.31)	13/39 (33.33)	13/83 (15.66)	0.026
Unique fingerprint	721/1013 (71.17)	238/312 (76.28)	483/701 (68.90)	0.017
Fever	905/1259 (71.88)	276/374 (73.80)	629/885 (71.07)	0.326
Haemoptysis	423/1257 (33.65)	143/370 (38.65)	280/887 (31.57)	0.015
Mean (SD) BMI	21.47 (4.20)	23.14 (4.15)	20.76 (4.02)	<0.001†
Cavities on chest x-ray	407/1071 (38.00)	142/313 (45.37)	265/758 (34.96)	0.001
Median (IQR) time elapsed between onset of symptoms and treatment (days)	104.00 (63.00–185.00)	100.00 (63.00–185.00)	108 (62.00–185.00)	0.784‡

\* $\chi^2$  test.

†Student t test.

‡Mann–Whitney test.

§Resistance to streptomycin was found in 6.20% (57/919); to isoniazid in 17.30% (159/919); to rifampin in 5.55% (51/919); and to ethambutol in 1.41% (13/919) of isolates.

BMI, body mass index; DM, diabetes mellitus; TB, tuberculosis.

**Table 3** Treatment outcomes among patients with pulmonary TB with and without DM (Orizaba, Veracruz, Mexico, 1995–2010)

Outcome	Total number of TB patients n/total (%)	TB patients with DM n/total (%)	TB patients without DM n/total (%)	p Value*
Outcomes during and at the end of treatment				
Sputum conversion after $\geq 60$ days	350/873 (40.10)	133/290 (45.86)	217/583 (37.22)	0.014
Failure	36/1210 (2.97)	17/363 (4.68)	19/847 (2.24)	0.022
Cure	864/1210 (71.40)	259/363 (71.35)	605/847 (71.43)	0.978
Treatment completion	155/1210 (12.81)	49/363 (13.50)	106/847 (12.51)	0.639
Death during treatment	47/1210 (3.88)	11/363 (3.03)	36/847 (4.25)	0.314
Default	95/1210 (7.85)	23/363 (6.34)	72/847 (8.50)	0.200
Transfer out	13/1210 (1.07)	4/363 (1.10)	9/847 (1.06)	0.951
Outcomes after treatment was completed				
Recurrence† ‡	107/1163 (9.20)	41/352 (11.65)	66/811 (8.14)	0.057
Identical strains in first and second episodes	55/64 (85.94)	21/26 (80.77)	34/38 (89.47)	0.325
Different strains in first and second episodes	9/64 (14.06)	5/26 (19.23)	4/38 (10.53)	
Relapse§, †	74/1019 (7.26)	26/308 (8.44)	48/711 (6.75)	0.340
Identical strains in first and second episodes	31/38 (81.58)	10/13 (76.92)	21/25 (84.00)	0.593
Different strains in first and second episodes	7/38 (18.42)	3/13 (23.08)	4/25 (16.00)	
Deaths after TB treatment was completed¶				
Death due to TB	50/1198 (4.17)	9/359 (2.51)	41/839 (4.89)	0.059
Death by some cause other than TB	203/1198 (16.94)	104/359 (28.97)	99/839 (11.80)	<0.001

\* $\chi^2$  test.

†We were able to fingerprint both isolates for 59.81% (64/107) of the patients with a recurrence, including 51.35% (38/74) of the patients with a relapse.

‡Comparison of fingerprints of first or subsequent isolates among 19 patients who recurred after default revealed matching fingerprints in 14 patients. In five patients we were unable to obtain DNA on isolates of both episodes. Of the 13 patients who recurred after failure, 9 had matching fingerprints, 2 had different fingerprints and in 2 patients we were unable to obtain DNA on isolates of both episodes.

§Relapse patients are included within recurrent TB.

¶Six of 17 patients who died who did not accept treatment were excluded.

DM, diabetes mellitus; TB, tuberculosis.

x-rays was tested by multivariate analysis (tables 2 and 4). We were unable to obtain chest x-rays in 189 patients, mainly because they were unable or unwilling to attend the hospital where the studies were conducted. Online supplementary table 1 summarises the comparison between patients with and without a chest x-ray. Characteristics such as diagnosis of DM, sex, previous TB treatment, number of bacilli per oil immersion field, drug

resistance and HIV infection were similar between the two groups.

### Treatment outcomes

Seventeen patients refused treatment. Of the 1056 patients who completed treatment, 761 (72.06%) initiated treatment within 10 days of their diagnosis and 1039 (98.39%) received directly

**Table 4** Association of DM with selected clinical manifestations and treatment outcomes among patients with pulmonary TB by multivariate analyses

Variable	Cavities on chest x-ray OR† (95% CI) n=1051	Sputum conversion $\geq 60$ days OR† (95% CI) n=639	Treatment failure OR† (95% CI) n=756‡	Recurrence HR§ (95% CI) n=842	Relapse HR§ (95% CI) n=731
Diabetes	1.80 (1.35 to 2.41)*	1.51 (1.09 to 2.10)***	2.93 (1.18 to 7.23)***	1.76 (1.11 to 2.79)***	1.83 (1.04 to 3.23)***
Men	–	–	2.9 (1.02 to 8.24)***	–	–
>10 cigarettes per week	–	–	–	–	2.86 (1.42 to 5.75)**
Previous TB treatment	–	–	5.1 (2.00 to 13.00)**	–	–
Time elapsed between onset of symptoms and treatment	–	1.01 (1.01 to 1.01)***	–	–	–
>10 bacilli per oil immersion field	2.11 (1.57 to 2.84)**	–	–	–	2.00 (1.09 to 3.64)***
Joint resistance to isoniazid and rifampin	–	5.80 (1.63 to 29.71)**	37.46 (12.21 to 114.85)*	8.41(4.57 to 15.46)*	12.85 (4.91 to 33.58)*
Failure or default	–	–	–	4.83 (2.79 to 8.35)*	–
HIV infection	0.32 (0.09 to 1.12)¶	–	–	4.23 (1.03 to 17.42)***	–
Body mass index	0.95 (0.92 to 0.98)**	–	–	–	–

\*p&lt;0.001; \*\*p&lt;0.01; \*\*\*p&lt;0.05.

†Unconditional logistic regression model.

‡Patients who failed were compared with patients who cured or completed treatment - variable not included in the final model.

§Cox proportional hazards model.

¶Not significant

DM, diabetes mellitus; TB, tuberculosis.



observed therapy. Table 3 shows the outcomes during and at the end of treatment and after treatment was completed. Bivariate and multivariate analyses controlled for sociodemographic and clinical variables showed that patients with DM had a higher probability of delayed sputum conversion and treatment failure (tables 3 and 4).

Patients were followed for an average of 61.7 months (IQR 26.6–97.4). Cox adjusted hazards ratios controlled for relevant confounding factors revealed that patients with DM had a significantly greater probability of recurrence and relapse (table 4).

There were 26 patients who were unaware of their diagnosis of DM until after their diagnosis of TB, which represent 6.50% of the 400 patients with a diagnosis of DM. Multivariate models reanalysing the association of a diagnosis of DM showed that DM continued to be associated with an increased likelihood of cavities on the chest x-ray, sputum conversion >60 days, treatment failure, recurrence and relapse (see online supplementary table 2).

We were able to fingerprint both *M tuberculosis* isolates in 64 of 107 patients (59.81%) with a recurrence, including 38 of 74 patients (51.35%) with a relapse. Most of the second episodes among patients with DM were caused by bacteria with the same genotype but, in 5 of 26 instances (19.23%), reinfection with a different strain occurred (table 3). There was no difference in the proportion of individuals who recurred within 12 months after completion of treatment and harboured the same genotype (26/55, 47.27%) and individuals who were reinfected with a different genotype (2/9, 22.22%,  $p=0.2$ ).

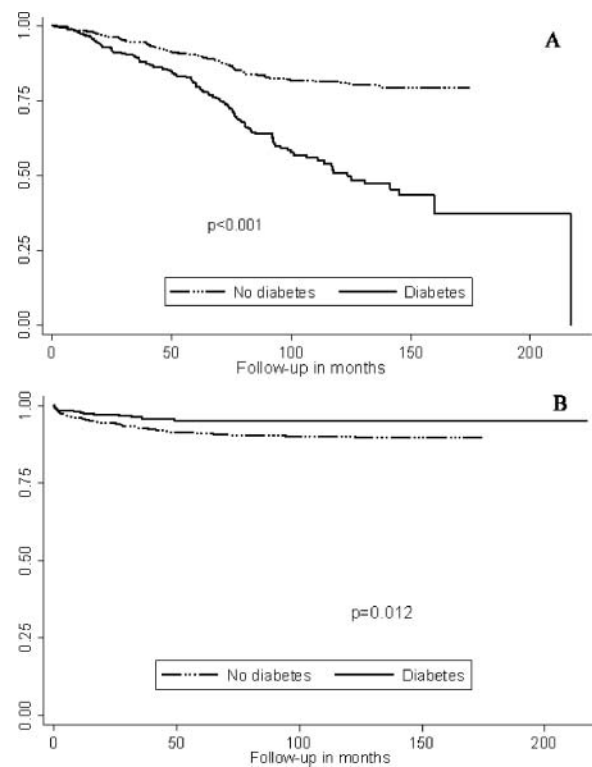
The frequencies of death during treatment among patients with and without DM were similar according to crude analyses. After TB treatment was completed, mortality due to some other cause than TB was higher among patients with DM (table 3). Patients with DM had a lower survival rate when death from other causes was analysed (figure 1A,  $p<0.001$ ), while patients without DM had lower survival rates when death from TB was analysed (figure 1B,  $p=0.012$ ). Renal failure, alcoholic cirrhosis of the liver, cardiovascular diseases and DM were listed as the main causes of death on the death certificate in those patients whose death was attributed to a cause other than TB (table 5).

## DISCUSSION

The data presented in this prospective cohort study show that patients with DM and TB have more severe clinical manifestations, delayed sputum conversion and a higher probability of treatment failure, recurrence and relapse. Using molecular tools, we found that subsequent episodes among patients with DM are due to bacteria with the same genotype or are caused by reinfection with bacteria with a different genotype. It is therefore imperative to implement the collaborative framework recommended by WHO and the Union broadly to prevent and control TB among patients with DM.<sup>4</sup>

The frequency of DM among patients with pulmonary TB observed in this study was high (29.63%) and similar to that reported among Mexican Americans<sup>18</sup> and in other regions.<sup>19 20</sup>

Treatment outcomes in patients with TB and DM have been a subject of debate. Although some data indicate that patients with DM are probably more likely to experience negative outcomes, the published literature suffers from limitations associated with study design, methods of diagnosing DM, outcome definitions and failure to control for important confounders. Moreover, there is a deficiency in the number of studies performed in settings with high burdens of both diseases.<sup>5</sup>



**Figure 1** Kaplan–Meier survival curves by diagnosis of diabetes. (A) Death by some cause other than tuberculosis (TB) ( $p<0.001$ ) and (B) death from TB ( $p=0.012$ ). Estimated survival of patients with bacteriologically confirmed pulmonary TB according to the presence of diabetes; patients with diabetes had lower survival rates when death from other causes was analysed (A,  $p<0.001$ ) while patients without diabetes had lower survival rates when death from TB was analysed (B,  $p=0.012$ ).

**Table 5** Causes of death on death certificate according to death attributed to tuberculosis (TB) and death attributed to other causes\*

Causes of death according to death certificate	Total deaths N=306	Death attributed to TB N=89	Death attributed to other causes N=217	p Value
Tuberculosis	79 (25.81)	61 (68.53)	18 (8.29)	<0.001
Renal failure	50 (16.33)	3 (3.37)	47 (21.65)	<0.001
Alcoholic cirrhosis of liver	37 (12.09)	4 (4.49)	33 (15.20)	0.009
Cardiovascular diseases	34 (11.11)	6 (6.74)	28 (12.90)	0.119
Diabetes mellitus	19 (6.20)	1 (1.12)	18 (8.29)	0.018
Chronic obstructive pulmonary disease	14 (4.57)	3 (3.37)	11 (5.06)	0.518
Pneumonia	14 (4.57)	0 (0.00)	14 (6.45)	0.014
Malignant neoplasms	13 (4.24)	2 (2.24)	11 (5.06)	0.266
HIV/AIDS	10 (3.26)	3 (3.37)	7 (3.22)	0.948
Accidents	6 (1.96)	0 (0.00)	6 (2.76)	0.113
Other causes†	31 (10.13)	6 (6.74)	25 (11.52)	0.208

\*Deaths were attributed to tuberculosis based on two of the following: death certificate with tuberculosis as the main cause of death; interview with a close caregiver who identified tuberculosis as a probable cause of death; or sputum or culture-confirmed tuberculosis at the time of death.<sup>11</sup>

†Includes gastrointestinal diseases (5); sepsis, unspecified (5); protein-energy malnutrition (5); epilepsy (3); alcoholic liver disease (2); cerebrovascular accident (2); abscess of lung (1); hepatic failure (1); lupus erythematosus (1); and not otherwise specified (6).

We found that clinical and radiological manifestations are more severe among patients with DM and TB, as has been previously described.<sup>21–23</sup> Our observation regarding delayed sputum conversion at 60 days agrees with most studies, although the timing of delayed conversion has been shown to vary.<sup>5</sup>

The independent risk of failure as a sole outcome associated with DM in our study was 2.93 (95% CI 1.18 to 7.23), which is higher than the previously reported pooled risk associated with the combined outcome of failure and death of 1.69 (95% CI 1.36 to 2.12).<sup>5</sup> In the majority of previous studies the inability to analyse failure as the sole outcome is most likely due to small sample sizes.<sup>23 24</sup>

We also found higher independent risks of recurrence and relapse among patients with DM. In contrast to the previous literature,<sup>5</sup> the use of *M tuberculosis* fingerprinting allowed us to document whether patients with DM experiencing subsequent episodes had TB caused by the same bacteria as the previous episode or reinfection with a different strain. Molecular tools have provided direct evidence for the occurrence of exogenous reinfection among both immunocompetent and immunocompromised individuals,<sup>16</sup> although patients with DM have not been specifically studied. We demonstrated that patients with DM are more likely to have infections caused by the same bacteria as the previous episode. However, the occurrence of exogenous reinfection in one-fifth of the cases merits further consideration. Exogenous TB reinfection in patients with DM might be due to nosocomial TB transmission occurring as a result of attending clinics where there is a high prevalence of diagnosed and undiagnosed TB, as has been described for HIV-infected patients.<sup>25</sup>

Based on our results, DM thus appears to have an aggravating effect on TB. Although the physiopathology of the coexistence of these two diseases has yet to be elucidated, changes to the immune system of patients with active TB and DM have been described, including reductions in the activation of alveolar macrophages and in the capacity to produce interleukin 10,<sup>26 27</sup> reductions in Th1 cytokines<sup>28 29</sup> and alterations in the innate response.<sup>30</sup>

We documented higher rates of mortality from causes other than TB among patients with DM. We studied death during treatment and extended follow-up to investigate mortality after completion of treatment. The existing literature indicates a higher risk of death during TB treatment, particularly when adjusting for confounding factors,<sup>5</sup> but a limitation of these studies has been ascertaining the cause of death. In this work we based the cause of death on two of three criteria as previously reported.<sup>11</sup> Other authors have also described higher rates of overall mortality among patients with DM who had TB without determining TB as the cause of death.<sup>31 32</sup> We postulate that earlier and higher rates of non-TB-related mortality in patients with DM explain why we were unable to detect higher rates of TB-related deaths despite poor TB treatment outcomes among them.

### Strengths and limitations of the study

The strengths of our study include the following: (1) recruitment of patients previously diagnosed with DM to avoid the inclusion of patients with active TB and impaired glucose tolerance that improves or returns to levels prior to TB disease after receiving effective TB treatment; (2) a large sample size; (3) survival analyses that controlled for relevant confounders, thus permitting the detection of negative outcomes including relapse and recurrence; and (4) the use of molecular tools that allowed us to compare strains between subsequent episodes in the same patient. Our approach therefore overcomes many of the limitations of previous studies that were identified in the systematic review conducted by Baker *et al.*<sup>5</sup>

One limitation is that, because significant socioeconomic differences were noted between patients with and without DM, it is possible that persons with better access to healthcare services were more likely to be diagnosed with both DM and TB. However, TB cases were actively recruited by community health workers and prior analyses indicated that TB is more commonly diagnosed in persons of lower socioeconomic status.<sup>33</sup> Moreover, there were no differences between patients with and without DM with regard to indicators of health access. Thus, there was no differential opportunity for the diagnosis of TB according to the availability of health services. The study also does not reflect the long-term evolution of DM control as we did not measure metabolic control or complications. We were therefore unable to determine whether metabolic control had any impact on clinical outcomes. We may have underestimated the real frequency of DM as the prevalence of DM was based on self-reporting of diagnosis by a physician. This method has been found to be adequate for epidemiological studies, although it underestimates the real frequency of DM by approximately 20%.<sup>34</sup> We consider our data to be unbiased since, when we re-analysed data including both patients with a previous DM diagnosis and individuals who were unaware of their DM until after TB was diagnosed, observed associations continued to be statistically significant.

### CONCLUSIONS AND POLICY IMPLICATIONS

Our results show that DM can exacerbate the clinical course of TB. Given the absence of international guidelines on the joint management and control of TB and DM, national programmes need to establish a coordinated response to these two diseases at both the organisational and clinical levels.<sup>4</sup> The occurrence of exogenous reinfection in patients with subsequent episodes of TB emphasises the need to prevent transmission in high-risk environments, particularly in healthcare settings.

Given the growing epidemic of DM worldwide, it is necessary to add DM prevention and control strategies to TB control programmes and vice versa and to evaluate their effectiveness. The concurrence of both diseases potentially carries a risk of global spreading, with serious implications for TB control and the achievement of the United Nations Millennium Development Goals.<sup>35</sup>

**Acknowledgements** We thank the population, patients and healthcare workers of the Orizaba Health Jurisdiction, Mexico for their generous support and cooperation. The authors wish to thank Drs Carmen Soler and Carlos Conde for performing HIV testing and Drs Manuel Tielve, Ruben Acevedo and Luis Felipe Alva for chest radiograph interpretation. The authors especially thank Dr Peter Small for his contributions in initiating this population-based cohort study.

**Contributors** MEJC, LPCH, LGG, JSO and APL participated in the study design, data management, data analysis and wrote the manuscript. LFR, GDS, MBV, SCQ, EFG, RBS, NTV and RAMG contributed to the study design and implementation. RCM and NMR participated in the study design and contributed to the analyses. All authors had full access to all of the data and analysis results and can take responsibility for the integrity of the data and the accuracy of the data analysis. LGG is the guarantor.

**Funding** This work was supported by the Mexican Secretariat of Health, the National Institutes of Health of the USA (A135969 and K01TW000001), the Wellcome Trust (176W009), the Howard Hughes Medical Institute (55000632) and the Mexican Council of Science and Technology (SALUD 2003-C01-132, SEP-2004-C01-47499/A1, FOSSIS 2005-03 (15203), FOSSIS 2005-2 14475, SALUD-2008-C01-87332, SALUD-2010-01-140178). The funding agencies did not participate in the study design; in the collection, analysis and interpretation of data; in the writing of the report; and in the decision to submit the article for publication.

**Competing interests** None.

**Ethics approval** Ethical approval was obtained from the Ethical Commission of the Instituto Nacional de Salud Pública (approval numbers CI-017, 107, 180, 211 and 275). Participants gave informed consent before taking part. All TB patients were

referred to health facilities to receive treatment in accordance with the stipulations of the National Program for the Prevention and Control of TB and the National Program for the Prevention and Control of DM.

**Provenance and peer review** Not commissioned; externally peer reviewed.

**Open Access** This is an Open Access article distributed in accordance with the Creative Commons Attribution Non Commercial (CC BY-NC 3.0) license, which permits others to distribute, remix, adapt, build upon this work non-commercially, and license their derivative works on different terms, provided the original work is properly cited and the use is non-commercial. See: <http://creativecommons.org/licenses/by-nc/3.0/>

## REFERENCES

- World Health Organization. Diabetes. Fact sheet Number 312. August 2011. <http://www.who.int/mediacentre/factsheets/fs312/en/index.html> (accessed Nov 2011).
- World Health Organization. Global tuberculosis report 2012. [http://www.who.int/tb/publications/global\\_report/en/index.html](http://www.who.int/tb/publications/global_report/en/index.html) (accessed Oct 2011).
- Jeon CY, Murray MB. Diabetes mellitus increases the risk of active tuberculosis: a systematic review of 13 observational studies. *PLoS Med* 2008;5:e152.
- World Health Organization. Collaborative framework for care and control of tuberculosis and diabetes. [http://www.who.int/diabetes/publications/tb\\_diabetes2011/en/index.html](http://www.who.int/diabetes/publications/tb_diabetes2011/en/index.html) (accessed Nov 2011).
- Baker MA, Harries AD, Jeon CY, et al. The impact of diabetes on tuberculosis treatment outcomes: a systematic review. *BMC Med* 2011;9:81.
- Harries AD, Murray MB, Jeon CY, et al. Defining the research agenda to reduce the joint burden of disease from diabetes mellitus and tuberculosis. *Trop Med Int Health* 2010;15:659–63.
- Ponce-De-Leon A, Garcia-Garcia Md Mde L, Garcia-Sancho MC, et al. Tuberculosis and diabetes in southern Mexico. *Diabetes Care* 2004;27:1584–90.
- Instituto Nacional de Estadística, Geografía, e Informática (INEGI). XIII Censo General de Población y Vivienda 2010. México 2011. <http://www.inegi.gob.mx> (accessed May 2011).
- Modificación a la Norma Oficial Mexicana NOM-006-SSA2-1993, para la prevención y control de la tuberculosis en la atención primaria a la salud: Secretaría de Salud, Diario Oficial de la Federación, Mexico, 2000.
- World Health Organization, et al. Revised international definitions in tuberculosis control. *Int J Tuberc Lung Dis* 2001;5:213–15.
- García-García Mde L, Ponce-De-Leon A, García-Sancho MC, et al. Tuberculosis-related deaths within a well-functioning DOTs control program. *Emerg Infect Dis* 2002;8:1327–32.
- Norma Oficial Mexicana NOM-010-SSA2-2010, Para la prevención y el control de la infección por Virus de la Inmunodeficiencia Humana. Secretaría de Salud, Diario Oficial de la Federación, Mexico, 2010.
- American Diabetes Association. Diagnosis and classification of diabetes mellitus. *Diabetes Care* 2012;35(Suppl 1):S64–71.
- Pfyffer G, Palicova F. Mycobacterium: general characteristics, laboratory detection, and staining procedures. In: Versalovic J, Carrol K, Funke G, et al. eds. *Manual of Clinical Microbiology*. 10th edn. Washington, D.C: ASM Press, 2011:472–502.
- Barlow RE, Gascoyne-Binzi DM, Gillespie SH, et al. Comparison of variable number tandem repeat and IS6110-restriction fragment length polymorphism analyses for discrimination of high- and low-copy-number IS6110 Mycobacterium tuberculosis isolates. *J Clin Microbiol* 2001;39:2453–7.
- Mathema B, Kurepina NE, Bifani PJ, et al. Molecular epidemiology of tuberculosis: current insights. *Clin Microbiol Rev* 2006;19:658–85.
- Secretaría de Salud. Encuesta Nacional de Adicciones 2008. México 2009 <http://www.insp.mx/encuesta-nacional-de-adicciones-2008.html> (accessed May 2011).
- Restrepo BI, Fisher-Hoch SP, Crespo JG, et al. Type 2 diabetes and tuberculosis in a dynamic bi-national border population. *Epidemiol Infect* 2007;135:483–91.
- Alisjahbana B, van Crevel R, Sahiratmadja E, et al. Diabetes mellitus is strongly associated with tuberculosis in Indonesia. *Int J Tuberc Lung Dis* 2006;10:696–700.
- Singla R, Khan N, Al-Sharif N, et al. Influence of diabetes on manifestations and treatment outcome of pulmonary TB patients. *Int J Tuberc Lung Dis* 2006;10:74–9.
- Perez-Guzman C, Torres-Cruz A, Villarreal-Velarde H, et al. Atypical radiological images of pulmonary tuberculosis in 192 diabetic patients: a comparative study. *Int J Tuberc Lung Dis* 2001;5:455–61.
- Tatar D, Senol G, Alptekin S, et al. Tuberculosis in diabetics: features in an endemic area. *Jpn J Infect Dis* 2009;62:423–7.
- Wang CS, Yang CJ, Chen HC, et al. Impact of type 2 diabetes on manifestations and treatment outcome of pulmonary tuberculosis. *Epidemiol Infect* 2009;137:203–10.
- Alisjahbana B, Sahiratmadja E, Nelwan EJ, et al. The effect of type 2 diabetes mellitus on the presentation and treatment response of pulmonary tuberculosis. *Clin Infect Dis* 2007;45:428–35.
- Bock NN, Jensen PA, Miller B, et al. Tuberculosis infection control in resource-limited settings in the era of expanding HIV care and treatment. *J Infect Dis* 2007;196(Suppl 1):S108–13.
- Wang CH, Yu CT, Lin HC, et al. Hypodense alveolar macrophages in patients with diabetes mellitus and active pulmonary tuberculosis. *Tuberc Lung Dis* 1999;79:235–42.
- van Exel E, Gussekloo J, de Craen AJ, et al. Low production capacity of interleukin-10 associates with the metabolic syndrome and type 2 diabetes: the Leiden 85-Plus study. *Diabetes* 2002;51:1088–92.
- Tsukaguchi K, Okamura H, Matsuzawa K, et al. (Longitudinal assessment of IFN-gamma production in patients with pulmonary tuberculosis complicated with diabetes mellitus). *Kekkaku: (Tuberculosis)* 2002;77:409–13.
- Tsukaguchi K, Yoneda T, Yoshikawa M, et al. (Case study of interleukin-1 beta, tumor necrosis factor alpha and interleukin-6 production peripheral blood monocytes in patients with diabetes mellitus complicated by pulmonary tuberculosis). *Kekkaku: (Tuberculosis)* 1992;67:755–60.
- Restrepo BI, Fisher-Hoch SP, Pino PA, et al. Tuberculosis in poorly controlled type 2 diabetes: altered cytokine expression in peripheral white blood cells. *Clin Infect Dis* 2008;47:634–41.
- Santo AH. Deaths attributed to multiple causes and involving tuberculosis in the state of Rio de Janeiro Brazil between 1999 and 2001. *J Bras Pneumol* 2006;32:544–52.
- Oursler KK, Moore RD, Bishai WR, et al. Survival of patients with pulmonary tuberculosis: clinical and molecular epidemiologic factors. *Clin Infect Dis* 2002;34:752–9.
- Sanchez-Perez H, Flores-Hernandez J, Jansa J, et al. Pulmonary tuberculosis and associated factors in areas of high levels of poverty in Chiapas, Mexico. *Int J Epidemiol* 2001;30:386–93.
- Centers for Disease Control and Prevention (CDC). Self-reported prevalence of diabetes among Hispanics—United States, 1994–1997. *MMWR Morb Mortal Wkly Rep* 1999;48:8–12.
- Stevenson CR, Forouhi NG, Roglic G, et al. Diabetes and tuberculosis: the impact of the diabetes epidemic on tuberculosis incidence. *BMC Public Health* 2007;7:234.

Supplementary Table 1: Characteristics of patients with pulmonary TB, with and without chest-X ray. Orizaba, Veracruz, Mexico, 1995-2010.

Characteristics	Total	Without X ray	With X ray	p value*
	n/Total (%)	n/Total (%)	n/Total (%)	
Previous diagnosis of diabetes	374/1262 (29.64.)	61/189 (32.28)	313/1073 (29.17)	0.389
Male	730/1262 (57.84)	116/189 (61.38)	614/1073 (57.22)	0.286
Age (Years, mean, S.D.)	44.68(0.19)	44.6(0.20)	45.27(0.55)	0.386†
More than 6 years of formal schooling	846/1260 (67.14)	113/188 (60.11)	733/1072 (68.38)	0.026
Household with earthen floor	267/1184 (22.55)	29/123 (23.58)	238/1061 (22.43)	0.774
Rural residence	148/1232 (12.01)	31/180 (17.22)	117/1052 (11.12)	0.02
Distance to nearest health centre (Meters, median, IQR)	705(424-1055)	665(319-1086)	710(439-1053)	0.055‡
Access to Social Security	451/1262 (35.74)	51/189 (26.98)	400/1073 (37.28)	0.006
More than 10 drinks per week	263/1150 (22.87)	216/975 (22.15)	47/175 (26.86)	0.173
More than 10 cigarettes per week	88/1150 (7.65)	76/976 (7.79)	12/174 (6.90)	0.684



Usage of illegal drugs	64/1261 (5.08)	10/188 (5.32)	54/1073 (5.03)	0.869
Homelessness or residing in shelters	46/1257 (3.66)	3/187 (1.60)	43/1070 (4.02)	0.105
BCG scar	597/1257 (47.49)	103/186 (55.38)	494/1071 (46.13)	0.02
HIV infection	24/1228 (1.95)	6/174 (3.45)	18/1054 (1.71)	0.124
Previous TB treatment	1108/1261 (87.87)	173/189 (91.53)	935/1072 (87.22)	0.094
More than 10 bacilli per oil immersion field	300/1262 (23.77)	51/189 (26.98)	249/1073 (23.21)	0.261
Drug resistance to any drug	190/919 (20.67)	18/98 (18.37)	172/821 (20.95)	0.551
Joint resistance to isoniazid and rifampin	43/919 (4.68)	3/98 (3.06)	40/821 (4.87)	0.422
Unique fingerprint	191/1013 (18.85)	24/142 (16.90)	167/871 (19.17)	0.521
Fever	905/1259 (71.88)	137/189 (72.49)	768/1070 (71.78)	0.841
Hemoptysis	423/1257 (33.65)	59/187 (31.55)	364/1070 (34.02)	0.51

TB= Tuberculosis; HIV= Human Immunodeficiency Virus; SD.= Standard deviation; IQR = Interquartile range \* Chi square, †

Student's t-test, ‡Mann-Whitney test

Supplementary Table 2: Association of DM (including 374 patients with a previous DM medical diagnosis and 26 patients who were unaware of their DM diagnosis until after TB was diagnosed) with selected clinical manifestations and treatment outcomes among patients with pulmonary TB by multivariate analyses.

Variable	Cavities in chest X-ray odds ratio* (95% CI) n=971	Sputum conversion ≥60 days odds ratio* (95% CI) n=641	Treatment failure odds ratio* (95% CI) n=715***	Recurrence hazard ratio† (95% CI) n=784	Relapse hazard ratio† (95% CI) n=731
Diabetes	1.86 (1.39-2.48) ‡	1.47 (1.06-2.03) **	2.96 (1.14-7.66) **	2.05 (1.26-3.34) ¶	2.27 (1.26-4.10) ¶
Men	---	---	2.99 (1.02-8.84) **	---	---
More than 10 cigarettes per week	---	---	---	---	3.28 (1.61-6.70) ¶

Previous TB treatment	---	---	4.16 (1.52-11.38) ¶	---	---
Time elapsed between onset of symptoms and treatment	---	1.01 (1.00-1.01)**	---	---	---
More than 10 bacilli per oil immersion field	2.18 (1.61-2.97) ‡	---	---	---	1.93 (1.02-3.63) **
Joint resistance to isoniazid and rifampin	---	5.90 (1.65-21.02) ¶	33.38 (10.34-107.77) ‡	10.1 (5.09-20.04) ‡	12.41 (4.27-36.03) ‡
Failure or abandon		---	---	2.4 (2.40-8.55) ‡	---
HIV infection	0.29 (0.06-1.32) §	---	---	2.57 (0.35-18.69) §	---
Body mass index	0.95 (0.91-0.98) ¶	---	---	---	---

TB = Tuberculosis; DM = Diabetes mellitus; HIV= Human Immunodeficiency Virus; \* Unconditional logistic regression model; † Cox proportional hazard model; ‡ <0.001; § NS; ¶ <0.01; \*\*<0.05. \*\*\* Patients who failed were compared with patients who cured or completed treatment. --- Variable not included in the final model.