

ASTHMA

Epithelial inducible nitric oxide synthase activity is the major determinant of nitric oxide concentration in exhaled breath

C Lane, D Knight, S Burgess, P Franklin, F Horak, J Legg, A Moeller, S Stick

Thorax 2004;59:757–760. doi: 10.1136/thx.2003.014894

See end of article for authors' affiliations

Correspondence to:
Associate Professor S Stick,
Department of Respiratory
Medicine, Princess
Margaret Hospital for
Children, GPO Box D184,
Perth, Western Australia
6001; stephen.stick@
health.wa.gov.au

Received 19 August 2003
Accepted 19 April 2004

Background: The fractional concentration of nitric oxide (NO) in exhaled breath (F_{eNO}) is increased in asthma. There is a general assumption that NO synthase (NOS) 2 in epithelium is the main source of NO in exhaled breath. However, there is no direct evidence to support the assumption and data from animal models suggest that non-inducible NOS systems have important roles in determining airway reactivity, regulating inflammation, and might contribute significantly to NO measured in exhaled breath.

Methods: Bronchial epithelial cells were obtained from healthy, atopic, and asthmatic children by non-bronchoscopic brushing. Exhaled NO (F_{eNO}) was measured directly using a fast response chemiluminescence NO analyser. RNA was extracted from the epithelial cells and real time polymerase chain reaction was used to determine the expression of NOS isoenzymes. NOS2 was examined in macrophages and epithelial cells by immunohistochemistry.

Results: NOS1 mRNA was not detectable. NOS3 mRNA was detected in 36 of 43 samples at lower levels than NOS2 mRNA which was detectable in all samples. The median F_{eNO} was 15.5 ppb (95% CI 10 to 18.1). There was a significant correlation between F_{eNO} and NOS2 expression ($R=0.672$, $p<0.001$). All epithelial cells exhibited NOS2 staining, whereas staining in the macrophages was variable and not related to phenotype.

Conclusions: Only NOS2 expression was associated with F_{eNO} in respiratory epithelial cells obtained from children ($R=0.672$; $p<0.001$). This suggests that F_{eNO} variability is largely determined by epithelial NOS2 expression with little contribution from other isoforms.

The fractional concentration of nitric oxide (NO) in exhaled breath (F_{eNO}) is increased in a number of inflammatory disorders of the lung^{1–3} including asthma,⁴ leading to the proposal that F_{eNO} could be a useful marker of airway inflammation.⁵ A large number of reports have used F_{eNO} measurements, and there is considerable interest in this aspect of NO biology despite relatively limited understanding of the cellular source and physiological factors responsible for NO in exhaled air. Nitric oxide is synthesised by a family of NO synthase (NOS) enzymes. Neuronal NOS (NOS1) and endothelial NOS (NOS3) are constitutively expressed enzymes in the lung that produce NO in low amounts and have an absolute requirement for intracellular calcium/calmodulin. Inducible NOS (NOS2) is constitutively expressed in the human airway epithelium,⁶ but its expression can be upregulated many times by inflammatory agents.⁷ Epithelial cells and some inflammatory cells (including macrophages) in human lung express NOS2,⁶ and levels of F_{eNO} are reduced in asthmatic⁸ and healthy subjects⁹ following administration of selective inhibitors of NOS2. Although there is no direct evidence, these observations support the assumption that NOS2 in the epithelium—with its large surface area—is the main source of NO in exhaled breath. However, data from animal models suggest that the non-inducible NOS systems have important roles in determining airway reactivity¹⁰ and regulating inflammation.¹¹ These models have yielded conflicting results regarding the enzymatic source of F_{eNO} ; studies in mice have shown either NOS2¹² or NOS1¹⁰ to be a major determinant of F_{eNO} whereas, in rabbits, NOS3 is reported to contribute the bulk of NO in exhaled breath.¹³

This report attempts to address these potentially contradictory observations from studies in humans and animals. We studied epithelial cells and airway macrophages obtained from a unique unselected population of children in order to

test the hypothesis that epithelial NOS2 is the major contributor to NO measured in exhaled breath.

METHODS

To compare levels of NOS in the epithelium with F_{eNO} concentrations, we recruited 41 children (21 girls) of median age 10 years (range 6–16) admitted to Princess Margaret Hospital for a gastroscopy. Parents gave written informed consent for their children to participate. Exhaled NO levels were measured with a chemiluminescence analyser (Sievers Instruments Inc, CO, USA) using a standard single breath technique¹⁴ at a flow rate of 35 ml/s. All children undergoing routine gastroscopy were eligible for the study. Children with previous respiratory symptoms other than those that could be explained by mild asthma and children with evidence of reflux oesophagitis on biopsy were excluded from the analysis. Children were free of respiratory symptoms at the time of the study.

Blind brushing was performed to sample distal tracheal epithelial cells. Before gastroscopy, each child was anaesthetised and intubated. A cytology brush (BC 25105, Olympus, Australia) was inserted directly through the endotracheal tube, advanced until resistance was felt, and rubbed against the epithelial surface to sample cells. The brush was then withdrawn and agitated in 5 ml BEBM (Clonetics, CA, USA) to remove epithelial cells. This brushing procedure was repeated 3–5 times. Cell samples were immediately taken to the laboratory and processed within 15 minutes of sampling. An aliquot (10 μ l) of the resulting cell suspension was taken to determine cell number using a haemocytometer. The suspension contained 95–98% epithelial cells with 2–5% macrophages which were then removed

Abbreviations: F_{eNO} , fractional concentration of nitric oxide in exhaled breath; NOS, nitric oxide synthase

Table 1 Sequences of the TaqMan primers and probes used in the study

Gene	Sequence (5' to 3')	Reference
NOS2 forward	ACCCTGAGCTCTTCGAAATCC	Designed using primer express
NOS2 reverse	TTAGCTCCAGTTCGCCGAAACC	
NOS2 probe	TGGCCATGGAACATCCCAAATACGAG	
NOS3 forward	GTGGCTGTCTGCATGGACCT	15
NOS3 reverse	CCACGATGGTGACTTTGGCT	
NOS3 probe	AGTGGAATCAACGTGGCCGTGCT	
NOS1 forward	CAGTGGTCCAAGCTGCAGGTA	16
NOS1 reverse	GGTGGCATACTTGACATGGTTACA	
NOS1 probe	TCGATGCCCGTGACTGCACCAC	

All of the probes carried a 5' FAM (6-carboxy-fluorescein) reporter dye and a 3' TAMRA (6-carboxy-tetramethyl rhodamine) quencher dye.

by positive selection. Briefly, 3 ml of the cell suspension was added to a culture dish that had been coated with CD-68 antibody. The plate was placed in a humidified incubator (37°C, 5% CO₂) for 20 minutes to allow macrophages to adhere. The macrophages were removed from the plate with trypsin (0.25%). Cytospin slides were prepared in a subgroup of samples (four controls, two asthmatic subjects, one atopic subject) for staining with a monoclonal antibody to macrophages (DAKO, Australia) and a polyclonal antibody to NOS2 (Selby-Biolab, Australia). Samples were incubated with monoclonal primary antibody (1:50) for 1 hour followed by a 45 minute incubation with Alexa fluor 488-labelled secondary antibody (1:200; Bio Scientific, Australia). The polyclonal primary was then used at 1:50 for 1 hour, followed by an Alexa fluor 546-labelled secondary antibody (1:200, 45 min, Bio Scientific).

RNA was extracted from epithelial cells using the Qiagen RNeasy mini kit (Qiagen, Victoria, Australia). Cells were lysed in 350 µl RLT buffer before homogenisation using QIAshredder columns (Qiagen, Australia) and the lysate was added to the RNeasy columns. Total RNA was eluted in 50 µl RNase-free water. cDNA was synthesised from up to 0.5 µg of total RNA in a volume of 25 µl consisting of 1 × RT buffer, 10 mM deoxyribonucleotide triphosphates, 25 mM MgCl₂, 50 µM random hexamers, 20 U/µl RNase inhibitor, and 50 U/µl Multiscribe reverse transcriptase (all from Applied Biosystems, NSW, Australia). Reactions were incubated at 25°C for 10 minutes, 48°C for 45 minutes, 95°C for 5 minutes, and then cooled to 4°C before storage at -80°C.

The β-actin primers and probes used for this study were obtained from Applied Biosystems (CA, USA) and, as such, the sequence data are proprietary. Primer and probe sequences for NOS2, NOS3 and NOS1 are given in table 1. Inducible NOS primers and probes were designed using the Primer Express software program (Version 1.5, Perkin-Elmer). The primers were designed to be intron spanning and a BLASTn search (National Center for Biotechnology Information, Bethesda, MD, USA) was performed to confirm the total gene specificity of the sequences.

Table 2 Characteristics of healthy, healthy atopic, and atopic asthmatic subjects recruited to study

	Healthy (n = 24)	Healthy atopic (n = 10)	Atopic asthmatic (n = 9)
Age (years)	10	12.5	8
M/F	11/13	5/5	6/3
Median (range) SPT	0 (0-0)	4 (1-4)	4 (1-7)
Median (range) Fe _{NO}	10.75 (3.4-59.2)	21.2 (5.3-190)	13 (4.2-85)

SPT = skin prick test; Fe_{NO} = fraction of expired nitric oxide.

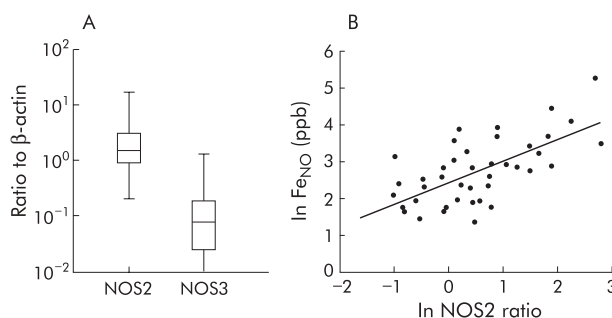


Figure 1 (A) Nitric oxide synthase expression in the epithelium. NOS levels are expressed as a ratio to β-actin. The median is the line bisecting the box, box limits represent 25th and 75th percentiles and whiskers extend to the maximum and minimum values. NOS1 levels were all below the limit of detection and are not therefore displayed. (B) Correlation between (ln) Fe_{NO} and (ln) NOS2 expression ($R=0.672$, $n=43$).

There has been discussion recently regarding the selection of housekeeping genes.¹⁷ We evaluated a panel of housekeeping genes (β-actin, 18S and HPRT) and found that HPRT was poorly correlated with β-actin or 18S expression, whereas β-actin and 18S expression were highly correlated. β-actin was chosen as the housekeeping gene because the level of expression was in the range expected for NOS2.

Expression of NOS2, NOS3, and NOS1 genes was quantified relative to the expression of β-actin using Taqman real time polymerase chain reaction (PCR). PCR was performed using the ABI Prism 7700 Sequence Detection System (Perkin-Elmer, CA, USA). cDNA was incubated in a 25 µl reaction volume containing 1 × Taqman Universal PCR Master Mix (Applied Biosystems, NSW, Australia), forward primer (10 µM), reverse primer (10 µM), and probe (200 nM). The cycles used were 50°C for 2 minutes, 95°C for 10 minutes, followed by 40 cycles of 15 seconds at 95°C and 60 seconds at 60°C. Signals were analysed by the ABI Prism Sequence Detection System software version 1.9.

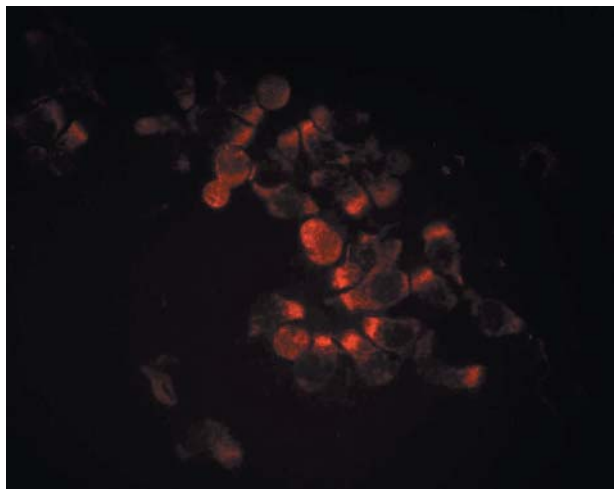


Figure 2 Cytospin preparations of epithelial cells were stained for NOS2. Cells stained positive for NOS2. The levels of NOS2 could not be quantified as the percentage of cells expressing NOS2 did not vary between individuals and the intensity of staining cannot be accurately quantified in cytospin preparations.

Exhaled NO concentrations, NOS2 and NOS3 levels were skewed to the right so all values were transformed to their natural logarithm (ln) to achieve a normal distribution. Gene expression was expressed as a ratio of expression of β -actin and was calculated using the method of Pfaffl *et al.*¹⁸ Simple linear regression models were used to determine relationships between Fe_{NO} levels and NOS2 expression and between age and levels of Fe_{NO} and NOS2. Multiple linear regression was performed using a hierarchical procedure to examine the effect of NOS1 and NOS3 expression and age on the relationship between Fe_{NO} and NOS2 expression. All analyses were performed using SPSS 10.0 (SPSS Inc, Chicago, IL, USA).

RESULTS

The characteristics of the study participants are shown in table 2. The median number of epithelial cells obtained per sample was 2.05×10^6 (95% CI 1.95 to 2.60). NOS2 mRNA was detectable in all samples. Expression of NOS1 mRNA was detectable in only 14 samples at levels below the reliable limit of detection for the TaqMan assay. Only seven samples did not have detectable levels of NOS3 but, overall, the expression was significantly lower than that of NOS2 (fig 1A).

The median Fe_{NO} level was 15.5 ppb (95% CI 10 to 18.1) and was significantly higher in atopic children than in either healthy or asthmatic children ($p < 0.05$). There was a significant correlation between Fe_{NO} and NOS2 expression in this cohort ($R = 0.672$, $p < 0.001$; fig 1B). The relationship with NOS2 expression was stronger in asthmatic children ($R = 0.828$, $p = 0.006$) than in asymptomatic atopic ($R = 0.752$, $p = 0.02$) or healthy children ($R = 0.525$, $p = 0.008$). Age was a significant predictor of Fe_{NO} ($p = 0.014$) but not of NOS2 ($p = 0.402$). There were no significant correlation between Fe_{NO} and NOS1 or NOS3 expression. Adding NOS1 and NOS3 levels as explanatory variables to a hierarchical regression model did not explain more of the Fe_{NO} variability, but the inclusion of age increased the R value marginally from 0.672 to 0.725.

All epithelial cells stained positive for NOS2 (fig 2). Immunostaining of macrophages revealed very little expression of NOS2. There was variability in expression between samples but there was no relationship with Fe_{NO} or phenotype.

DISCUSSION

We observed a wide range of Fe_{NO} levels in this mixed population of healthy, atopic, and asthmatic children (fig 1B), even in the absence of current respiratory symptoms. The sampling technique used in this study samples NO produced in the lower airway, proximal to respiratory bronchioles,¹⁹ so the blind brushing sampled an appropriate segment of the airway. In agreement with other studies,²⁰ we found that age was a significant predictor of Fe_{NO} . There was no relationship between age and NOS2 expression, supporting the finding that the relationship between age and Fe_{NO} in children is due to the volume of the respiratory anatomical dead space.²¹

The correlation between Fe_{NO} and NOS2 was strongest in the asthmatic children but was still significant in the healthy subjects. This suggests that NOS2 expression is responsible for the increased Fe_{NO} and significantly contributes to baseline Fe_{NO} . The constitutive isoforms of NOS may play a more important role in baseline Fe_{NO} than in increased Fe_{NO} , but our study was not designed to test this hypothesis. When corrected for age, most of the variability in Fe_{NO} can be explained by differences in epithelial NOS2 expression regardless of phenotype. We chose subjects with different phenotypes in order to ensure a range of Fe_{NO} levels. In this age group we have previously found that Fe_{NO} levels are determined by the presence of atopy and bronchial responsiveness rather than a diagnosis of asthma. Our observations in the present study are consistent with these previous data, but the study was not designed with the power to differentiate between groups on the basis of Fe_{NO} .

Both epithelial cells and macrophages were stained for NOS2. As all epithelial cells stained positive for NOS2, we were not able to differentiate between samples by counting the percentage of cells expressing NOS2. Levels of protein expression could not be determined using this technique. We did not observe consistent within or between sample evidence of NOS2 activity in macrophages and it is therefore unlikely that differences in Fe_{NO} could be explained by macrophage NOS2 expression.

Since the production of NOS2 is regulated at the transcriptional level,⁷ it is reasonable to assert that, in the absence of acute asthmatic symptoms, Fe_{NO} is largely determined by epithelial NOS2 expression with little contribution from other isoforms. In a clinical context it seems reasonable to assert that changes in Fe_{NO} will largely reflect changes in epithelial NOS2 expression. The measurement of Fe_{NO} might therefore be a useful indicator of broader epithelial function in addition to being an inflammatory marker, and this aspect requires further investigation. Moreover, in the light of these observations, caution should be used when extrapolating from animal models to explain NO airway biology in humans.

We have shown that a simple blind brushing technique can be used in children to obtain samples of epithelial mRNA suitable for gene expression analysis which is likely to prove useful for investigating the role of the epithelium in respiratory disease.

Authors' affiliations

C Lane, S Burgess, P Franklin, F Horak, J Legg, A Moeller, S Stick, School of Paediatrics and Child Health, University of Western Australia, Perth, Western Australia

S Burgess, F Horak, J Legg, A Moeller, S Stick, Department of Respiratory Medicine, Princess Margaret Hospital for Children, Perth, Western Australia

D Knight, School of Medicine and Pharmacology, University of Western Australia, Perth, Western Australia

REFERENCES

- Maziak W, Loukides S, Culpitt S, et al. Exhaled nitric oxide in chronic obstructive pulmonary disease. *Am J Respir Crit Care Med* 1998;**157**:998–1002.
- Wang CH, Liu CY, Lin HC, et al. Increased exhaled nitric oxide in active pulmonary tuberculosis due to inducible NO synthase upregulation in alveolar macrophages. *Eur Respir J* 1998;**11**:809–15.
- Kharitonov SA, Yates D, Barnes PJ. Increased nitric oxide in exhaled air of normal human subjects with upper respiratory tract infections. *Eur Respir J* 1995;**8**:295–7.
- Kharitonov SA, Yates D, Springall DR, et al. Exhaled nitric oxide is increased in asthma. *Chest* 1995;**107**:156–75.
- Silkoff PE, Robbins RA, Gaston B, et al. Endogenous nitric oxide in allergic airway disease. *J Allergy Clin Immunol* 2000;**105**:438–48.
- Kobzik L, Bredt DS, Lowenstein CJ, et al. Nitric oxide synthase in human and rat lung: immunocytochemical and histochemical localization. *Am J Respir Cell Mol Biol* 1993;**9**:371–7.
- Asano K, Chee CB, Gaston B, et al. Constitutive and inducible nitric oxide synthase gene expression, regulation, and activity in human lung epithelial cells. *Proc Natl Acad Sci USA* 1994;**91**:10089–93.
- Yates DH, Kharitonov SA, Thomas PS, et al. Endogenous nitric oxide is decreased in asthmatic patients by an inhibitor of inducible nitric oxide synthase. *Am J Respir Crit Care Med* 1996;**154**:247–50.
- Hansel TT, Kharitonov SA, Donnelly LE, et al. A selective inhibitor of inducible nitric oxide synthase inhibits exhaled breath nitric oxide in healthy volunteers and asthmatics. *FASEB J* 2003;**17**:1298–300.
- De Sanctis GT, Mehta S, Kobzik L, et al. Contribution of type I NOS to expired gas NO and bronchial responsiveness in mice. *Am J Physiol* 1997;**273**:L883–8.
- Tulic MK, Wale JL, Holt PG, et al. Differential effects of nitric oxide synthase inhibitors in an in vivo allergic rat model. *Eur Respir J* 2000;**15**:870–7.
- Cook S, Vollenweider P, Menard B, et al. Increased eNO and pulmonary iNOS expression in eNOS null mice. *Eur Respir J* 2003;**21**:770–3.
- Vaughan DJ, Brogan TV, Kerr ME, et al. Contributions of nitric oxide synthase isozymes to exhaled nitric oxide and hypoxic pulmonary vasoconstriction in rabbit lungs. *Am J Physiol Lung Cell Mol Physiol* 2003;**284**:L834–43.
- Silkoff PE, P. A. M, Slutsky AS, et al. Marked flow-dependence of exhaled nitric oxide using a new technique to exclude nasal nitric oxide. *Am J Respir Crit Care Med* 1997;**155**:260–7.
- Dotsch J, Puls J, Klimek T, et al. Reduction of neuronal and inducible nitric oxide synthase gene expression in patients with cystic fibrosis. *Eur Arch Otorhinolaryngol* 2002;**259**:222–6.
- Saur D, Seidler B, Paehge H, et al. Complex regulation of human neuronal nitric-oxide synthase exon 1c gene transcription. Essential role of Sp and ZNF family members of transcription factors. *J Biol Chem* 2002;**277**:25798–814.
- Chambers RC. Gene expression profiling: good housekeeping and a clean message. *Thorax* 2002;**57**:754–6.
- Pfaffl MW. A new mathematical model for relative quantification in real-time RT-PCR. *Nucleic Acids Res* 2001;**29**:e45.
- Geigel EJ, Hyde RW, Perillo IB, et al. Rate of nitric oxide production by lower alveolar airways of human lungs. *J Appl Physiol* 1999;**86**:211–21.
- Franklin PJ, Taplin R, Stick SM. A community study of exhaled nitric oxide in healthy children. *Am J Respir Crit Care Med* 1999;**159**:69–73.
- Pedroletti C, Hogman M, Merilainen P, et al. Nitric oxide airway diffusing capacity and mucosal concentration in asthmatic schoolchildren. *Pediatr Res* 2003;**54**:496–501.

LUNG ALERT

Cytokine receptors and fibroblast proliferation in interstitial pneumonia

▲ Jakubzick C, Choi ES, Carpenter KJ, et al. Human pulmonary fibroblasts exhibit altered interleukin-4 and interleukin-13 receptor subunit expression in idiopathic interstitial pneumonia. *Am J Pathol* 2004;**164**:1989–2001

Fibroblasts play a pivotal role in the pathogenesis of idiopathic interstitial pneumonia (IIP). Interleukin (IL)-4 and IL-13 are Th2-type profibrotic cytokines that exert their effects on fibroblasts via multimeric receptors comprised of several shared subunits: IL-4R α , IL-13R α 1, IL-13R α 2, and γ . This study examined the differential expression of IL-4 and IL-13 receptors on cultured human fibroblasts from surgical lung biopsies of patients with different subtypes of IIP.

The fibroblasts from patients with usual interstitial pneumonia (UIP) had the highest gene and protein expression of the IL-4 specific type I receptor, IL-4 and IL-13 binding type 2 receptor, and a decoy receptor containing IL-13R α 2. A chimeric fusion protein comprised of IL-13 and *Pseudomonas* exotoxin A (IL-13PE), previously used to target IL-13-expressing malignant and inflammatory cells, markedly inhibited fibroblast proliferation, especially in cultures from patients with UIP. IL-13PE mediated effects on IIP fibroblasts seem to be via both IL-4R α and IL-13R α 2, a finding that could potentially open new therapeutic avenues.

It would be interesting to see such results reproduced in a larger series of UIP, perhaps with the use of newer culture techniques such as laser capture microdissection. In addition, the confounding effect of fibroblast apoptosis in the process needs to be clarified and the findings confirmed by in vivo models. Finally, the extent to which a temporally and geographically heterogenous disease such as UIP follows an IL-4/IL-13 pathogenetic pathway, the homogeneity of the (myo)fibroblast population in IIP, and the role of IL-13PE or similar compounds in modulating fibroblast activity are all (as yet) unanswered questions.

O C Ioachimescu

Cleveland Clinic Foundation, Cleveland, USA; oiaoc@yahoo.com