

Systemic inflammation and decline in lung function in a general population: a prospective study

Andrew W Fogarty, Stuart Jones, John R Britton, Sarah A Lewis, Tricia M McKeever

Thorax 2007;62:515–520. doi: 10.1136/thx.2006.066969

See end of article for authors' affiliations

Correspondence to: Dr Andrew Fogarty, Division of Epidemiology and Public Health, University of Nottingham, Clinical Sciences Building, City Hospital, Nottingham NG5 1PB, UK; andrew.fogarty@nottingham.ac.uk

Received 13 June 2006
Accepted 22 November 2006
Published Online First
24 January 2007

Background: An increase in levels of C-reactive protein (CRP), a marker of systemic inflammation, is associated with reduced forced expiratory volume in 1 s (FEV₁), supporting the hypothesis that the pathophysiology of chronic obstructive pulmonary disease has a systemic inflammatory component. However, few large studies have assessed the relationship between systemic inflammation as measured by CRP and decline in lung function prospectively in a randomly selected population.

Methods: In 1991, data were collected on FEV₁ and forced vital capacity (FVC) and a blood sample was taken from 2442 randomly selected adults in a community-based cohort. In 2000 these measures were repeated in 1301 individuals. The level of serum CRP was analysed in these samples from 1991 and 2000.

Results: In cross-sectional analyses of data from 1991 and 2000, serum CRP levels were inversely related to FEV₁ and FVC. After adjustment for smoking and other confounders, the difference in FEV₁ was reduced by –9 ml (95% CI –13 to –5) and –7 ml (95% CI –13 to –2) for each mg/l increment in serum CRP in 1991 and 2000, respectively. There was no significant association between baseline serum CRP levels and decline in FEV₁ and FVC over 9 years.

Conclusions: Although serum CRP levels are inversely associated with lung function in cross-sectional studies, there was no effect of a marker of systemic inflammation on decline in lung function over 9 years.

Chronic obstructive pulmonary disease (COPD) is common with a prevalence of 7% to 23% of adults.¹ It is characterised by an accelerated decline in lung function which, in turn, results in an increase in both morbidity¹ and mortality.² The most important risk factor for COPD is cigarette smoking, and for many years it was considered that the pathophysiological processes were a consequence of local damage to the small airways. However, cross-sectional studies have shown that a serum marker of inflammation, C-reactive protein (CRP), is inversely associated with forced expiratory volume in 1 s (FEV₁)³ and is increased in those with a diagnosis of COPD,^{4–6} an observation that supports the concept that there is a systemic inflammatory response in COPD. If systemic inflammation is contributing to the pathophysiology of COPD, this would provide a rationale to consider using novel therapeutic interventions that target this response. To date, however, there have been few large prospective studies of the association between systemic inflammation, as measured by serum CRP, and decline in lung function in a randomly selected population.⁷ We have used data from a longitudinal community-based study to determine whether systemic inflammation as measured by CRP is a risk factor for an increased decline in FEV₁ and forced vital capacity (FVC) over 9 years.

METHODS

Participants

The participants were drawn from a previously reported cohort of 2633 adults aged 18–70 years living in Nottingham first studied in 1991.^{8–10} In 2000, all surviving individuals were invited to participate in a follow-up study.¹¹ Both studies were approved by the Nottingham City Hospital ethics committee.

Data collection

In 1991 and 2000, participants were asked to abstain from inhaled bronchodilators for 4 h and from oral bronchodilators for 8 h before their appointment. Subjects completed a computer-administered lifestyle questionnaire. FEV₁ and FVC

were then measured using a dry bellows spirometer (Vitalograph, Buckingham, UK), taking the best of three technically satisfactory manoeuvres with the subject seated. After venesection, serum samples were separated by centrifugation, typically within 15 min, and stored at –80°C. These samples were subsequently defrosted and highly sensitive CRP measured using an automated immunoturbidimetric assay on an Olympus AU5400 analyser.

Data analysis

Smoking status was defined in three categories: current smoker (those who had smoked within 1 month of the study in 1991 or 2000), ex-smoker (those who had not smoked for at least 1 month before the appointment in 1991 or 2000) and never smokers. Smoking data from 1991 were used to validate never-smoking status in 2000. The number of pack-years smoking exposure was estimated for subjects from their reported age at starting smoking, and the usual amount smoked during this period.

Initially, for the 1991 and 2000 datasets, we analysed the cross-sectional association between serum CRP levels and FEV₁ in a multiple linear regression with adjustment for a priori confounding factors of age, sex, height, age squared, age-height interaction, smoking status and total of cigarette pack-years smoked. Potential confounding factors including body mass index (BMI), vitamin C and magnesium intake were investigated by univariate analysis of the association with CRP and FEV₁ and, if a potential confounding effect was identified, they were added to the a priori model. We examined the shape of the relation between CRP and FEV₁ by plotting CRP in deciles and linearity was subsequently tested using the likelihood ratio test. As the relation was linear, results were presented both as change in FEV₁ per mg/l CRP and graphically in deciles.

Abbreviations: BMI, body mass index; COPD, chronic obstructive pulmonary disease; CRP, C-reactive protein; FEV₁, forced expiratory volume in 1 s; FVC, forced vital capacity

Table 1 Baseline characteristics of study population

	Cross-sectional population 1991		Cross-sectional population 2000	
	Total	Provided blood for CRP	Total	Provided blood for CRP
Number of participants	2633	2442	1346	1301
Men, N (%)	1312 (50)	1224 (50)	668 (50)	647 (50)
Mean (SD) age (years)	44.4 (13.6)	44.7 (13.5)	56.1 (12.4)	56.1 (12.3)
Mean (SD) height (m)	1.68 (0.1)	1.68 (0.1)	1.68 (0.1)	1.68 (0.1)
Mean (SD) BMI (kg/m ²)	25.5 (4.0)	25.5 (4.0)	26.8 (4.4)	26.8 (4.4)
	n = 2614	n = 2425		
Smoking status, N (%)				
Never	1306 (50)	1201 (49)	680 (51)	654 (50)
Ex	730 (28)	681 (28)	510 (38)	494 (38)
Current	597 (23)	560 (23)	156 (12)	153 (12)
Mean (SD) FEV ₁ (l)	3.19 (0.92)	3.18 (0.93)	2.84 (0.85)	2.84 (0.85)
			N = 1343	N = 1298
Mean (SD) FEV ₁ in 1991 (l)	–	–	3.2 (0.84)	3.18 (0.85)
Mean (SD) FVC (l)	3.94 (1.08)	3.94 (1.08)	3.67 (1.01)	3.67 (1.01)
			N = 1342	N = 1297
Mean (SD) FVC in 1991 (l)	–	–	3.94 (1.00)	3.94 (1.01)
Wheeze in past 12 months, n (%)	632 (24)	596 (24)	343 (25)	271 (21)
Median (IQR) CRP (mg/l)	–	1.14 (0.55–2.42)	–	1.69 (0.80–3.79)
Response in 2000 by deciles of CRP in 1991 (% total)				
1				116 (9.4)
2				129 (10.4)
3				123 (10.0)
4				132 (10.7)
5				125 (10.1)
6				133 (10.8)
7				129 (10.4)
8				125 (10.1)
9				115 (9.3)
10				107 (8.7)

BMI, body mass index; CRP, C-reactive protein; FEV₁, forced expiratory volume in 1 s; FVC, forced vital capacity; IQR, interquartile range.

The subsequent longitudinal analysis used both the 1991 and 2000 datasets. Predicted FEV₁ values were modelled in our dataset for each sex in non-smoking, non-asthmatic, non-wheezing individuals with terms for age, height, age squared and age-height interactions. Individual FEV₁ values were expressed as the residual difference from the predicted value, and these values were used to create a single value of change in residual by subtracting the 1991 residual from the 2000 residual. Using the data from 1991 and 2000, we used three measures of CRP exposure: the 1991 serum CRP, an average of the 1991 and 2000 serum CRP measures, and the change in CRP between 1991 and 2000. The effect of these exposures on change in residual value of FEV₁ was modelled independently using multiple linear regression.

Interactions for gender, smoking status and BMI on the relation between CRP and both cross-sectional and longitudinal measures of lung function were investigated and considered significant at the value of $p < 0.05$. The analyses were carried out using STATA V.9 (Stata Corporation, College Station, Texas, USA).

Using a conservative estimate of 250 ml for the within-subject standard deviation for change in FEV₁ over 9 years, the available maximum sample size of 1230 individuals provides 80% power to detect a difference in change in FEV₁ of 90 ml between the lowest and highest deciles of CRP.

RESULTS

A total of 2633 individuals provided complete data in 1991 and, of these, 1346 (51%) were followed up and provided further data in 2000 (tables 1 and 2; 4% of those who had participated in 1991 had died, 7% had moved from the area, 23% declined or were unable to participate in the study and 15% were uncontactable. Three participants could not provide satisfactory

lung function measures and were excluded from further analyses. Two thousand four hundred and forty-two (93%) of those who participated in 1991 and 1301 (97%) of those who participated in 2000 gave a serum sample for CRP analysis, and 1219 individuals gave a serum sample for CRP analysis in both 1991 and 2000. In 1991 and 2000, those who provided a sample for CRP analysis were representative of the total study population in both years, with a small decrease in the response rate from those who were in the top two deciles of CRP in 1991, with these individuals providing 9.3% and 8.7% of the samples in 2000.

The median serum level of CRP was 1.14 mg/ml (interquartile range (IQR) 0.55–2.4) in 1991 and 1.69 mg/ml (IQR 0.80–3.79) in 2000, and these values were significantly different ($p < 0.001$). In the 1991 dataset the serum CRP level was associated with BMI ($p < 0.001$) and dietary magnesium intake ($p = 0.003$). These factors were therefore included as potential confounding factors in subsequent analyses.

Cross-sectional analysis of CRP and lung function

There was a linear inverse association between CRP and FEV₁ (fig 1A and B). In 1991, each mg/l increase in serum CRP was associated with a 9 ml (95% CI –13 to –5) reduction in FEV₁. A similar association of a comparable strength was seen in the cross-sectional data from 2000 (table 2). The difference in FEV₁ between the highest and lowest deciles of CRP was –381 ml (95% CI –478 to –284) in 1991 and –259 ml (95% CI –385 to –132) in 2000. A stronger inverse association between the serum CRP level and FEV₁ was seen in those with a BMI < 20 kg/m² (interaction: $p = 0.015$ in 1991, $p = 0.033$ in 2000) in both the 1991 and 2000 cross-sectional datasets (table 3). Similar trends were observed for the relation between serum CRP levels and FVC (table 3).

Table 2 Summary of decline in lung function in study population from 1991 to 2000

	Number of individuals	Mean (SD) decline in FEV ₁ (ml)	Mean (SD) decline in FVC (ml)
Total population	1343	341 (291)	274* (391)
Gender			
Male	666	385 (325)	347 (437)
Female	677	297 (245)	202† (325)
Smoking status in 1991			
Never	713	310 (284)	220‡ (385)
Ex	390	361 (304)	338 (409)
Current	240	397 (281)	330 (357)
Age in 1991			
18–30	137	238 (297)	27§ (324)
30–40	265	294 (240)	173 (303)
40–50	376	337 (250)	280 (339)
50–60	342	376 (308)	362 (400)
60–70	223	411 (349)	401 (484)
Decile of CRP in 1991			
1	117	346 (285)	210 (415)
2	131	350 (265)	244 (397)
3	124	345 (270)	264¶ (395)
4	133	381 (316)	308 (399)
5	125	353 (275)	322 (336)
6	137	320 (247)	292 (325)
7	132	305 (230)	222 (333)
8	126	324 (258)	294 (346)
9	119	333 (360)	295 (470)
10	109	361 (395)	317 (485)

FEV₁, forced expiratory volume in 1 s; FVC, forced vital capacity.

*Data from 1342 individuals.

†Data from 676 individuals.

‡Data from 712 individuals.

§Data from 136 individuals.

¶Data from 123 individuals.

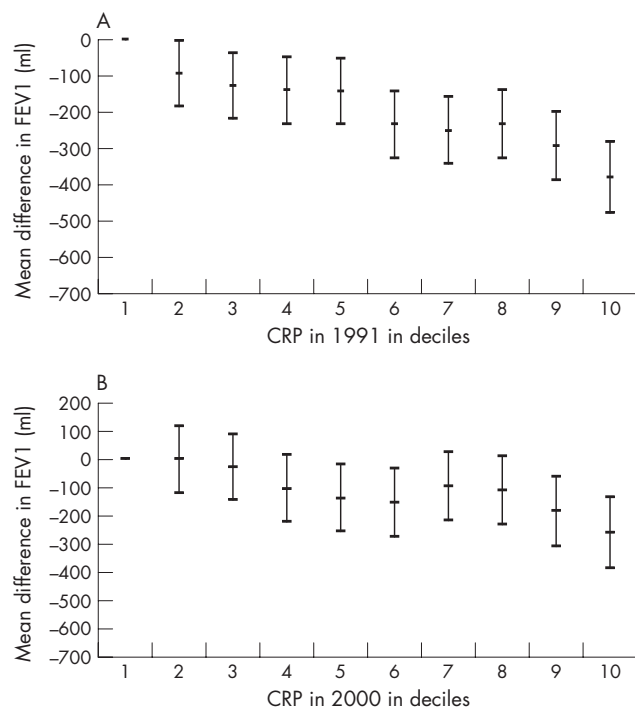


Figure 1 Cross-sectional relation between serum C-reactive protein (CRP) levels (mg/l) in deciles and forced expiratory volume in 1 s (FEV₁) in (A) 1991 and (B) 2000. The lowest decile of serum CRP is the reference value. Analysis adjusted for sex, age, age², height, age-height interaction, body mass index, dietary magnesium intake, current smoking status and number of cigarettes consumed in pack-years.

When the analyses were repeated with the exclusion of those who had self-reported wheeze in the past 12 months, the size of effect of the increase in serum CRP on both FEV₁ in both 1991 (–6 ml, 95% CI –11 to –2) and 2000 (–5 ml, 95% CI –11 to +1), and also FVC in 1991 (–8 ml, 95% CI –14 to –4) and 2000 (–7 ml, 95% CI –14 to 0) was decreased.

Longitudinal analysis of CRP and decline in lung function

There was no effect of CRP on decline in lung function in the total population using either of the two measures of CRP: the baseline 1991 value or the mean of the 1991 and 2000 measurements (table 4). However, there was a significant interaction with gender for FVC with a stronger inverse association in women, although no effect was seen for FEV₁. There were no other consistent interactions of the association of serum CRP with either smoking status or BMI on the decline in lung function. There was no association between the change in CRP over 9 years with change in FEV₁ when assessed as a continuous measure (–2 ml per mg/dl change in CRP, 95% CI –5 to +1), although change in CRP was inversely associated with change in FVC with –3 ml per mg/l change in CRP (95% CI –7 to 0). However, when assessed in tertiles of change in CRP, there was a linear association between change in CRP and change in FEV₁ (p value for trend = 0.024), with those in the middle and highest tertiles of change in CRP having lost –31 ml (95% CI –77 to +16) and –53 ml (95% CI –99 to –7) respectively compared with the lowest tertile. There was no association between change in CRP in tertiles and change in FVC (p value for trend = 0.36).

DISCUSSION

In this study we confirm the findings of a previous cross-sectional report that FEV₁ and FVC are inversely associated

Table 3 Effect of C-reactive protein (CRP, mg/l) on lung function using linear regression in two cross-sectional studies of the Nottingham Lung Health Study population in 1991 and 2000

	1991 (n = 2425)	2000 (n = 1298)
FEV ₁ (ml)	-9 (-13 to -5)	-7 (-13 to -2)
Stratified by smoking status		
Never	-6 (-10 to -1)	-3 (-11 to +4)
Ex	-27 (-39 to -15)	-13 (-22 to -4)
Current	-9 (-20 to +2)	-5 (-28 to +17)
	P _{interaction} = 0.005	P _{interaction} = 0.494
Stratified by gender		
Male	-13 (-21 to -6)	-5 (-14 to +4)
Female	-5 (-9 to -1)	-10 (-17 to -4)
	P _{interaction} = 0.022	P _{interaction} = 0.342
Stratified by BMI (kg/m ²)		
>20	-28 (-60 to +4)	-77 (-247 to +94)
20-24.9	-16 (-25 to -7)	+4 (-6 to +14)
25-29.9	-12 (-19 to -5)	-6 (-14 to +2)
>30	-3 (-10 to +5)	-20 (-31 to -10)
	P _{interaction} = 0.015	P _{interaction} = 0.033
FVC (ml)	-11 (-16 to -7)	-8 (-14 to -2)*
Stratified by smoking status		
Never	-9 (-14 to -3)	-4 (-13 to +4)
Ex	-31 (-45 to -18)	-14 (-24 to -4)
Current	-7 (-18 to +5)	-10 (-36 to +16)
	P _{interaction} = 0.003	P _{interaction} = 0.459
Stratified by gender		
Male	-18 (-27 to -10)	-5 (-15 to +5)
Female	-5 (-11 to 0)	-12 (-19 to -5)
	P _{interaction} = 0.001	P _{interaction} = 0.437
Stratified by BMI (kg/m ²)		
<20	-20 (-53 to +13)	-102 (-285 to +80)
20-24.9	-18 (-28 to -8)	+4 (-8 to +16)
25-29.9	-16 (-24 to -8)	-7 (-16 to +3)
>30	-4 (-11 to +4)	-26 (-39 to -13)
	P _{interaction} = 0.025	P _{interaction} = 0.029

FEV₁, forced expiratory volume in 1 s; FVC, forced vital capacity; BMI, body mass index.
 Basic model using FEV₁ adjusted for sex, age, age², height, age-height, body mass index and magnesium intake, smoking status (categorical) and smoking pack-years.
 *1297 individuals provided data for analysis.

with serum CRP levels after adjustment for smoking, and that this effect is larger in those with a low BMI. For the first time, however, we have been able to examine this association in a prospective dataset and found that, in contrast to the cross-sectional data, serum CRP is unrelated to a decline in lung function in a randomly selected population.

The strengths of this dataset are the randomly selected population from the electoral register of a local authority area in Nottingham which is likely to be a representative sample of the general population. While participation in the current study was potentially biased by survival, non-migration and motivation to participate, our data suggest that the participants in 2000 were broadly similar to the original population in terms of diet, smoking history, initial lung function and history of respiratory disease.¹¹ Another strength of this study is the availability of archived serum from both 1991 and 2000, and that over 90% of those who participated in both surveys provided serum for CRP analysis, thus minimising bias. By using two discrete measures of CRP, we are able to get a more precise measure of the total exposure to systemic inflammation over the time period studied. Storage of the serum samples at -80°C and testing the assays on the same run permits confidence in the accuracy of the highly sensitive CRP assay.¹² Our response rate of 51% of the original study population raises

Table 4 Effect of C-reactive protein (CRP, mg/l) on change in lung function using linear regression between 1991 and 2000

	1991 Serum CRP (n = 1241)	Average serum CRP (mean of 1991 and 2000) (n = 1219)
Decline in FEV ₁ (ml)	0 (-3 to +4)	-2 (-7 to +3)
Stratified by smoking status		
Never	+1 (-2 to +4)	0 (-6 to +4)
Ex	-2 (-15 to +10)	-5 (-18 to +8)
Current	+2 (-16 to +21)	-3 (-20 to +14)
	P _{interaction} = 0.969	P _{interaction} = 0.978
Stratified by gender		
Male	+3 (-3 to +9)	0 (-8 to +9)
Female	-2 (-5 to +2)	-5 (-10 to 0)
	P _{interaction} = 0.082	P _{interaction} = 0.116
Stratified by BMI (kg/m ²)		
>20	+27 (-30 to +84)	+53 (+8 to +99)
20-24.9	+3 (-5 to +11)	-4 (-14 to +6)
25-29.9	+3 (-3 to +9)	+1 (-7 to +9)
>30	-2 (-7 to +3)	-4 (-12 to +5)
	P _{interaction} = 0.563	P _{interaction} = 0.685
FVC (ml)	+3 (-1 to +7)*	+1 (-6 to +7)†
Stratified by smoking status		
Never	+4 (-1 to +8)	+4 (-3 to +10)
Ex	-3 (-20 to +13)	-10 (-26 to +7)
Current	+16 (-7 to +39)	+9 (-12 to +30)
	P _{interaction} = 0.489	P _{interaction} = 0.471
Stratified by gender		
Male	+8 (0 to +16)	+7 (-4 to +18)
Female	-1 (-5 to +3)	-5 (-12 to +2)
	P _{interaction} = 0.016	P _{interaction} = 0.027
Stratified by BMI (kg/m ²)		
>20	-22 (-104 to +60)	+41 (-29 to +111)
20-24.9	+5 (-5 to +15)	+1 (-11 to +14)
25-29.9	+9 (+1 to +16)	+5 (-5 to +16)
>30	-1 (-7 to +5)	-4 (-14 to +6)
	P _{interaction} = 0.0148	P _{interaction} = 0.0618

FEV₁, forced expiratory volume in 1 s; FVC, forced vital capacity; BMI, body mass index.
 Residuals calculated for men and women individually and adjusted for gender, age, age², height and age-height interaction and the model was adjusted for smoking status (categorical), smoking pack-years, and BMI (continuous).
 *n = 1240.
 †n = 1218.

concerns regarding response bias, particularly as elevated serum CRP is a prognostic marker of increased mortality.¹³ In our study population we were able to account for 85% of the original cohort, of whom 4% had died and, if the missing 15% were also deceased, this would be anticipated to bias our results towards observing no effect of CRP on change in lung function over time. We saw little differential in response rates in terms of baseline serum CRP levels, with 44% of those in the highest decile of serum CRP in 1991 providing data in 2000. Those who responded in 2000 had mean lung function values measured in 1991 that were almost identical to the total population surveyed in 1991, suggesting that there was little difference in those who responded compared with those who did not respond in terms of baseline respiratory function. In addition, we are unable to eliminate the possibility of residual confounding by factors such as plasma glucose which is known to be associated with decreased lung function¹⁴ and increased CRP.^{15 16}

Our observation that there is an inverse association between serum CRP and lung function in the cross-sectional data is consistent with a previous study which used data from 259

adults who participated in the European Community Respiratory Health Survey of FEV₁.³ This demonstrated that mean FEV₁ was 3.29 l for those in the highest tertile of serum CRP compared with 3.5 l for the lower two tertiles; the comparable values from our population are 2.88 l and 3.33 l, respectively. An increased serum CRP level has also been previously reported in individuals with a diagnosis of chronic obstructive pulmonary disease (COPD).⁴⁻⁶ Our data are not consistent with the two previously published studies of systemic inflammation as measured by CRP. One study of 4803 participants in the Lung Health Study demonstrated an accelerated decline in lung function in adults with higher CRP levels,¹³ although the population studied is not directly comparable to ours as they had mild to moderate COPD at baseline and we used a population-based random sample. A recent study from France of 531 participants showed a positive association between the change in CRP level and decline in lung function⁷ when change in CRP was divided into tertiles with a difference of -100 ml, between the highest and the lowest tertiles. Although in our dataset our initial evaluation of the association between change in CRP and change in lung function demonstrated no association, repeating this analysis using tertiles of change in CRP produced a similar result to Shaaban *et al*, with those in the highest tertile for change in CRP having a decline in lung function of -53 ml compared with those in the lowest tertile for change in FEV₁. The interpretation of this observation is complicated by the increase in median CRP in our population from 1991 to 2000, but the consistency of this observation with previous data suggests that it is not a spurious result. In addition, other studies using plasma fibrinogen, an alternative marker of chronic inflammation, found an association between higher plasma fibrinogen and greater loss of lung function in populations with¹⁷ and without¹⁸ COPD. The observation that a BMI of <20 kg/m² is associated with a larger decrease in lung function per unit increase in CRP cross-sectionally is surprising and must be considered with caution. We cannot exclude the possibility that this is a type 1 statistical error. However, this would be one potential explanation for the increased emphysema observed on CT scanning in patients with anorexia nervosa.¹⁹

The absence of any effect of systemic inflammation as measured by CRP on decline in lung function suggests that there was no association between these two measures, although we cannot exclude the possibility that there is a smaller effect than the 90 ml difference between deciles of CRP which our study was powered to detect. We have to consider how we can reconcile the cross-sectional observation of a consistent inverse association between CRP and lung function in our data and those of others,³⁻⁶ with the absence of a relation between baseline CRP and decline in lung function. First, it is possible that on the day of measurement a transient phenomenon such as reversible subclinical infection or a minor increase in atmospheric pollution reduced lung function measurements and increased CRP which would have an impact on the cross-sectional data but not those acquired over time. Second, it may be that the pulmonary pathophysiology of COPD, particularly at the level of the more vascular small airways and alveoli, is driving the systemic inflammation and the raised serum CRP level simply reflects this process. This would be consistent with the findings of a series of corticosteroid intervention studies in the late 1990s²⁰⁻²⁴ at doses that have systemic as well as local activity²⁵ but had no significant effect on the long-term rate of decline in lung function, as well as a recent factor analysis suggesting dissociation of lung function and airway inflammation in COPD.²⁶ Third, we speculate that other factors such as fetal development may influence the capacity for subsequent inflammatory responses as well as lung growth, and hence

maximum lung function acquired, but is less important in influencing the subsequent decline in lung function observed after the age of approximately 25 years.²⁷ This hypothesis is supported by the inverse association between birth weight and CRP with a 1 kg increase in birth weight being associated with a 10.7% decrease in CRP in a sample of adults aged 30 to 59 years,²⁸ and the association of low birth weight with subsequent decreased lung function in adults.²⁹ However, to date this hypothesis has not been tested directly in a population with data on birth weight, CRP and decline in lung function. Finally, CRP may not be the most appropriate marker of systemic inflammation and another marker such as fibrinogen¹⁷ or interleukin-6 that have been reported to be increased in COPD⁶ may be more sensitive.

In conclusion, we have shown that, while systemic inflammation is inversely related to lung function cross-sectionally, there is no evidence that this is a risk factor for an increased decline in lung function in the population, although we cannot exclude the possibility that this negative finding is a consequence of a healthy survivor effect. The role of systemic inflammation in the pathogenesis of COPD therefore remains uncertain.

Authors' affiliations

Andrew W Fogarty, John R Britton, Tricia M McKeever, Division of Epidemiology and Public Health, University of Nottingham, Clinical Sciences Building, City Hospital, Nottingham, UK

Sarah A Lewis, Division of Respiratory Medicine, University of Nottingham, Clinical Sciences Building, City Hospital, Nottingham, UK

Stuart Jones, Department of Clinical Chemistry, City Hospital, Nottingham, UK

Tricia McKeever is funded by the Wellcome Trust. The study was funded by Asthma UK, the British Lung Foundation and the University of Nottingham.

Competing interests: None.

REFERENCES

- 1 **Pauwels R**, Rabe K. Burden and clinical features of chronic obstructive pulmonary disease (COPD). *Lancet* 2004;**364**:613-20.
- 2 **Hole D**, Watt G, Davey Smith G, *et al*. Impaired lung function and mortality risk in men and women: findings from the Renfrew and Paisley prospective population study. *BMJ* 1996;**313**:711-5.
- 3 **Kony S**, Zureik M, Driss F, *et al*. Association of bronchial hyperresponsiveness and lung function with C-reactive protein (CRP): a population based study. *Thorax* 2004;**59**:892-6.
- 4 **Gan W**, Man S, Senthilvelan A, *et al*. Association between chronic obstructive pulmonary disease and systemic inflammation: a systematic review and a meta-analysis. *Thorax* 2004;**59**:574-80.
- 5 **Pinto-Plata V**, Mullerova H, Toso J, *et al*. C-reactive protein in patients with COPD, control smokers and non-smokers. *Thorax* 2006;**61**:23-8.
- 6 **Yende S**, Waterer G, Tolley E, *et al*. Inflammatory markers are associated with ventilatory limitation and muscle dysfunction in obstructive lung disease in well functioning elderly subjects. *Thorax* 2006;**61**:10-6.
- 7 **Shaaban R**, Kony S, Driss F, *et al*. Change in C-reactive protein levels and FEV (1) decline: a longitudinal population-based study. *Respir Med* 2006;**100**:2112-20.
- 8 **Britton J**, Pavord I, Richards K, *et al*. Dietary magnesium, lung function, wheezing, and airway hyper-reactivity in a random adult population sample. *Lancet* 1994;**344**:357-62.
- 9 **Britton J**, Pavord I, Richards K, *et al*. Dietary sodium intake and the risk of airway reactivity in a random adult population. *Thorax* 1994;**49**:875-80.
- 10 **Britton J**, Pavord I, Richards K, *et al*. Dietary antioxidant vitamin intake and lung function in the general population. *Am J Respir Crit Care Med* 1995;**151**:1383-7.
- 11 **McKeever T**, Scrivener S, Broadfield E, *et al*. Prospective study of diet and decline in lung function in a general population. *Am J Respir Crit Care Med* 2002;**165**:1299-303.
- 12 **Aziz N**, Fahey J, Detels R, *et al*. Analytical performance of a highly sensitive C-reactive protein-based immunoassay and the effects of laboratory variables on levels of protein in blood. *Clin Diagn Lab Immunol* 2003;**10**:652-7.
- 13 **Man P**, Connett J, Anthonisen N, *et al*. C-reactive protein and mortality in mild to moderate chronic obstructive pulmonary disease. *Thorax* 2006;**61**:849-53.
- 14 **McKeever T**, Weston P, Hubbard R, *et al*. Lung function and glucose metabolism: an analysis of data from the Third National Health and Nutrition Examination Survey. *Am J Epidemiol* 2005;**161**:546-56.
- 15 **Ridker P**, Buring J, Cook N, *et al*. C-reactive protein, the metabolic syndrome, and risk of incident cardiovascular events. *Circulation* 2003;**107**:391-7.

- 16 **Freeman D**, Norrie J, Caslake M, *et al*. C-reactive protein is an independent predictor of risk for the development of diabetes in the West of Scotland Coronary Prevention Study. *Diabetes* 2002;**51**:1596–600.
- 17 **Donaldson G**, Seemungal T, Patel I, *et al*. Airway and systemic inflammation and decline in lung function in patients with COPD. *Thorax* 2005;**128**:1995–2004.
- 18 **Thyagarajan B**, Jacobs D, Apostol G, *et al*. Plasma fibrinogen and lung function: the CARDIA study. *Int J Epidemiol* 2006;**35**:1001–8.
- 19 **Coxson H**, Chan I, Mayo J, *et al*. Early emphysema in patients with anorexia nervosa. *Am J Respir Crit Care Med* 2004;**170**:748–52.
- 20 **Burge P**, Calverley P, Jones P, *et al*. Randomised, double-blind, placebo controlled study of fluticasone propionate in patients with moderate to severe chronic obstructive pulmonary disease. *BMJ* 2000;**320**:1297–303.
- 21 **Pauwels R**, Lofdahl C-G, Laitinen L, *et al*. Long-term treatment with inhaled budesonide in persons with mild chronic obstructive pulmonary disease who continue smoking. *N Engl J Med* 1999;**340**:1948–53.
- 22 **The Lung Health Study Research Group**. Effect of inhaled triamcinolone on the decline in pulmonary function in chronic obstructive pulmonary disease. *N Engl J Med* 2000;**343**:1902–9.
- 23 **Vestbo J**, Sorensen T, Lange P, *et al*. Long term effect of inhaled budesonide in mild and moderate chronic obstructive pulmonary disease: a randomised controlled trial. *Lancet* 1999;**353**:1819–23.
- 24 **Highland K**, Strange C, Heffner J. Long-term effects of inhaled corticosteroids on FEV₁ in patients with chronic obstructive pulmonary disease. *Ann Intern Med* 2003;**138**:969–73.
- 25 **Clark D**, Lipworth B. Adrenal suppression with chronic dosing of fluticasone propionate compared with budesonide in adult asthmatic patients. *Thorax* 1997;**52**:55–8.
- 26 **Lapperre T**, Snoeck-Stroband J, Gosman M, and GLUCOLD Study Group, *et al*. Dissociation of lung function and airway inflammation in chronic obstructive pulmonary disease. *Am J Respir Crit Care Med* 2004;**170**:499–504.
- 27 **Fletcher C**, Peto R, Tinker C, *et al*. Factors related to the development of airflow obstruction. In: *The natural history of chronic bronchitis and emphysema*. 1st ed. Oxford: Oxford University Press, 1976:70–102.
- 28 **Sattar N**, McConnachie A, O'Reilly D, *et al*. Inverse association between birth weight and C-reactive protein concentrations in the MIDSPAN family study. *Arterioscler Thromb Vasc Biol* 2004;**24**:583–7.
- 29 **Barker D**, Godfrey K, Fall C, *et al*. Relation of birth weight and childhood respiratory disease to adult lung function and death from chronic obstructive airways disease. *BMJ* 1991;**303**:671–5.

PULMONARY PUZZLE

Respiratory disease in the ophthalmology department

Clinical presentation

A 24-year-old Indian doctor presented to the ophthalmology department complaining of bright lights in his field of vision during the preceding 6 months. He had previously been diagnosed with inferior branch retinal vein occlusion in his right eye and undergone laser treatment. On examination his visual acuities were 6/4 in the right and 6/5+ in the left eye. On fundoscopy there were multiple areas of sheathing of the retinal veins in both eyes, with small branch retinal vein occlusion in the right eye (fig 1).

Question

What is your differential diagnosis?

See page 526

This case was submitted by:

J K Quint

Department of Academic Respiratory Medicine, Royal Free and University College Medical School, London, UK

A Elsheikh, B Yung, J Samuel, D K Mukherjee

Department of Respiratory Medicine, Basildon and Thurrock University Hospital, Essex, UK

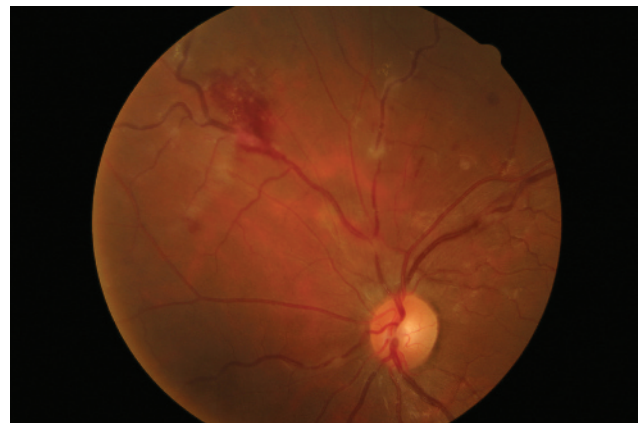


Figure 1 On fundoscopy; multiple areas of sheathing of the retinal veins, with small branch retinal vein occlusion.

Correspondence to: Dr Jennifer Quint, Department of Academic Respiratory Medicine, Royal Free and University College Medical School, Rowland Hill St, Hampstead, London NW3 2PF, UK; j.quint@medsch.ucl.ac.uk

doi: 10.1136/thx.2007.082578