

## CHRONIC OBSTRUCTIVE PULMONARY DISEASE

# Validation of computed tomographic lung densitometry for monitoring emphysema in $\alpha_1$ -antitrypsin deficiency

D G Parr, B C Stoel, J Stolk, R A Stockley



Thorax 2006;61:485-490. doi: 10.1136/thx.2005.054890

See end of article for authors' affiliations

Correspondence to:  
Professor R A Stockley,  
Lung Investigation Unit,  
First Floor, Nuffield House,  
Queen Elizabeth Hospital,  
Birmingham B15 2TH, UK;  
r.a.stockley@bham.ac.uk

Received 24 October 2005  
Accepted  
29 November 2005  
Published Online First  
14 March 2006

**Background:** Lung densitometry derived from computed tomographic images offers an opportunity to quantify emphysema non-invasively, but a pathological standard cannot be applied to validate its use in longitudinal monitoring studies. Consequently, forced expiratory volume in 1 second (FEV<sub>1</sub>) remains the standard against which new methods must be judged. We related progression of densitometry (15th percentile point and voxel index, threshold -950 Hounsfield units) to disease stage and FEV<sub>1</sub> decline in two studies of subjects with  $\alpha_1$ -antitrypsin deficiency (PiZ).

**Methods:** Consistency of progression, measured using densitometry and FEV<sub>1</sub>, was assessed in relation to disease stage in a 2 year study of 74 subjects grouped according to the FEV<sub>1</sub> criteria employed in the GOLD guidelines. In the second study of a subgroup of subjects with extended data (n=34), summary statistics were applied to measurements performed annually over 3 years and the rate of progression of densitometry was related to FEV<sub>1</sub> decline.

**Results:** The progression of percentile point was consistent across a wide spectrum of disease severity, but voxel index progression varied in association with disease stage (p=0.004). In the second study, FEV<sub>1</sub> decline correlated with progression of lung densitometry (percentile point:  $r_s=0.527$ , p=0.001; voxel index:  $r_s=-0.398$ , p=0.012).

**Conclusions:** 15th percentile point is a more consistent measure of lung density loss across a wide range of physiological impairment than voxel index. However, both methods are valid for use in longitudinal and interventional studies in which emphysema is the major outcome target.

The natural history of chronic obstructive pulmonary disease (COPD) is one of accelerated decline in lung function in susceptible individuals, and this progression has been assessed traditionally by measurement of the forced expiratory volume in 1 second (FEV<sub>1</sub>).<sup>1,2</sup> The FEV<sub>1</sub> is also used as a surrogate measure of emphysema and its progression,<sup>3</sup> although the cause of airway obstruction in general COPD is heterogeneous<sup>4,5</sup> and the FEV<sub>1</sub> is recognised as a non-specific parameter. This creates logistical problems in assessing treatment effect in therapeutic trials of disease (particularly emphysema) modifying drugs and, consequently, there is a pressing need for the development of more specific outcome measures.

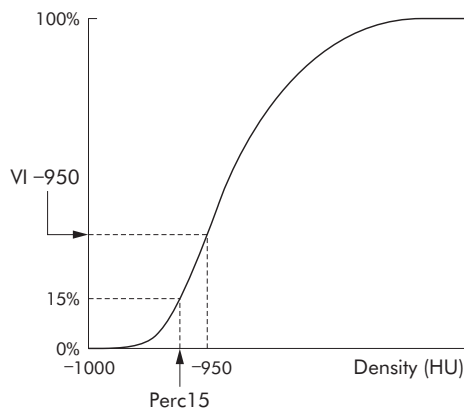
Emphysema, although defined in morbid anatomical terms,<sup>6,7</sup> can now be diagnosed and quantified non-invasively with computed tomography (CT). Various parameters derived from the frequency distribution histogram of lung voxel densities have been proposed as accurate measures<sup>8-13</sup> but, in longitudinal studies of emphysema in  $\alpha_1$ -antitrypsin deficiency (AATD), the most widely applied parameters are the percentile point and voxel index methods.<sup>14-17</sup> The percentile point is defined as the cut off value in Hounsfield units (HU) below which a specified percentage of all voxels are distributed, and the voxel index is defined as the proportion of lung voxels of low density below a specified threshold (fig 1). These two parameters may be regarded as having an inverse mathematical relationship, but there may be important differences between the methods. The sensitivity of the percentile point method is claimed to be relatively threshold independent and to give almost identical results within a broad range of percentiles from the 10th to the 30th,<sup>14</sup> whereas the voxel index method has been shown to be threshold dependent.<sup>14,18</sup> As a consequence, the progression

of the percentile point should be a consistent measure of lung density reduction across a wide spectrum of disease severity whereas, theoretically, the voxel index will vary with disease stage. However, there are no data that directly support either this hypothesis or the superiority of either method.

Cross sectional pathological studies using a high resolution protocol have shown that the voxel index at a threshold of -950 HU (VI -950) relates directly to emphysema,<sup>19,20</sup> and it is also likely that this is the optimal threshold for longitudinal studies.<sup>18</sup> In the only study to validate the percentile point method against a pathological standard, comparison between airway wall surface area per unit volume (AWUV) and CT densitometry was restricted to the 5th percentile point.<sup>8</sup> Notwithstanding the above published evidence, a recent peer reviewed workshop report on the use of CT in longitudinal studies of emphysema advised that the method of choice is the 15th percentile point (Perc15) measured from inspiratory images without the incorporation of volume control or correction to adjust for inspiratory level.<sup>21</sup>

Widespread acceptance of CT densitometry as an outcome measure for trials of emphysema modifying therapy requires validation against a recognised standard.<sup>22</sup> The "traditional measure" in longitudinal studies of COPD and emphysema is FEV<sub>1</sub><sup>1,23-27</sup> and, consequently, improved understanding is needed of the relationship between the progression of CT parameters and progression of FEV<sub>1</sub>. The present study was therefore undertaken to explore the relationship between emphysema progression and disease stage in AATD, comparing these two principal quantitative CT methods and, in

**Abbreviations:** AATD,  $\alpha_1$ -antitrypsin deficiency; CT, computed tomography; FEV<sub>1</sub>, forced expiratory volume in 1 second; HU, Hounsfield units; Perc15, 15th percentile point; VI, voxel index



**Figure 1** Cumulative voxel distribution histogram showing derivation of percentile point and voxel index parameters. The 15th percentile point (Perc15) is defined as the cut off value in Hounsfield units (HU) below which 15% of all voxels are distributed and, as a true measure of density, this parameter consequently decreases with worsening emphysema. The voxel index (VI) below  $-950$  HU is defined as the proportion of lung voxels of low density below a threshold of  $-950$  HU and increases with worsening emphysema.

addition, to establish the validity of CT for monitoring emphysema by evaluating whether the progression of CT lung densitometry was related to the rate of decline of FEV<sub>1</sub>.

## METHODS

### Subjects

Patients attending our centre between November 1996 and February 2002 were selected to include all PiZ subjects with complete datasets at baseline and 2 years later ( $n = 74$ ) and a subset of PiZ subjects with four consecutive complete annual assessments ( $n = 34$ ). Annual attendance on the programme includes full pulmonary function testing, assessment of health status, medical examination, and thoracic CT scanning as described previously.<sup>28</sup> Confirmation of  $\alpha_1$ -antitrypsin level and phenotype was by immunoassay and isoelectric focusing, respectively, in a central US laboratory (Heredilab, Salt Lake City, UT, USA) using a dried finger prick blood spot.

The programme was approved by the University of Birmingham Hospital NHS Trust research ethics committee and all subjects gave written informed consent.

### Lung function testing

Lung function testing was performed according to the British Thoracic Society/Association of Respiratory Technicians and Physiologists (BTS/ARTP) guidelines<sup>29</sup> as described previously.<sup>28</sup> For annual change in FEV<sub>1</sub>, only post-bronchodilator (2.5 mg salbutamol and 250  $\mu$ g ipratropium bromide, nebulised) results were used.

### Computed tomography

Patients were instructed to take their usual medication before scanning. Images were acquired on a Prospeed Scanner (General Electric Medical Systems, Milwaukee, WI, USA) at full inspiration in the supine position (120 kVp, 200 mAs, reconstructed using a high resolution "bone" algorithm<sup>28</sup>). Incremental 1 mm axial slices were taken at 10 mm intervals throughout the thorax for baseline scans and limited imaging at the level of the aortic arch and inferior pulmonary veins for subsequent scans.

### CT densitometry

The 15th percentile point (Perc15) and voxel index at a threshold of  $-950$  HU (VI  $-950$ ) were measured for single images selected from each series representing the upper

**Table 1** Clinical characteristics of the 74 PiZ subject cohort at baseline

	Median (IQR)	Median % predicted
Age	51 (46–56)	N/A
Pack years	15 (0–28)	N/A
FEV <sub>1</sub> (l)*	1.98 (1.5–2.4)	48
VC (l)*	4.0 (3.2–4.8)	101
RV (l)*	2.6 (2.1–3.4)	130
TLC (l)*	7.5 (6.2–8.4)	119
Kco*	1.0 (0.8–1.4)	67
UZ Perc15	–944.6 (–966.0 to –922.3)	N/A
LZ Perc15	–967.4 (–977.8 to –938.8)	N/A
Combined Perc15	–955.6 (–971.0 to –931.6)	N/A
UZ VI $-950$	12.7 (5.3–23.8)	N/A
LZ VI $-950$	26.6 (10.7–34.8)	N/A
Combined VI $-950$	20.2 (8.1–28.7)	N/A

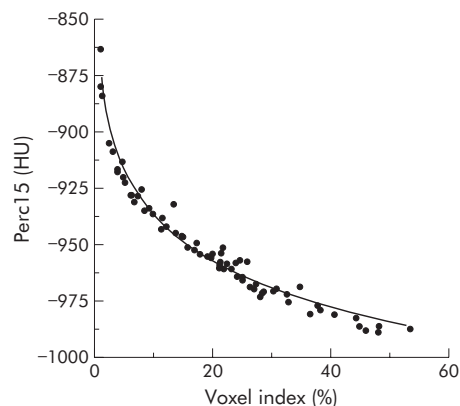
\*All lung function measurements were performed after dual bronchodilation with inhaled nebulised salbutamol (2.5 mg) and ipratropium bromide (250  $\mu$ g).

FEV<sub>1</sub>, forced expiratory volume in 1 second; VC, vital capacity; RV, residual volume; TLC, total lung capacity (helium dilution); Kco, lung carbon monoxide transfer factor (mmol/min/kPa/l); UZ, upper zone scans; LZ, lower zone scans; Combined, average of upper and lower zone scans; Perc15, 15th percentile point; VI  $-950$ , voxel index at a threshold of  $-950$  HU.

(through the middle of the aortic arch) and lower (at the junction of inferior pulmonary veins and left atrium) zones using the Pulmo-CMS software (MEDIS Medical Imaging Systems BV, Leiden, the Netherlands). An internal air calibration process was incorporated as described previously.<sup>18</sup>

### Trends in progression rate: comparison of densitometric parameters

The relationship between CT densitometric parameters was initially assessed in a cross sectional analysis of the baseline images ((upper zone parameter + lower zone parameter)/2) in 74 subjects with 2 year data. The group was then subdivided into four using the FEV<sub>1</sub> criteria incorporated into the GOLD classification of disease stage<sup>30</sup>—namely, FEV<sub>1</sub> >80% predicted (group 1); FEV<sub>1</sub> 50–79% predicted (group 2); FEV<sub>1</sub> 30–49% predicted (group 3); FEV<sub>1</sub> <30% predicted (group 4). In each group the median rate of progression and interquartile range (IQR) was calculated for FEV<sub>1</sub> and for each densitometric parameter derived from the upper and lower zone scans individually and averaged as above.



**Figure 2** Individual data for 15th percentile point (Perc15) and voxel index at a threshold of  $-950$  HU (VI  $-950$ ) derived from the mean values of upper zone and lower zone indices at baseline in 74 PiZ subjects ( $r_s = -0.994$ ,  $p < 0.001$ ).

## CT lung density progression and its relationship with FEV<sub>1</sub> decline

The rate of progression in FEV<sub>1</sub> (post-bronchodilator), Perc15 and VI -950 was measured in 34 subjects with annual data over 3 years using Excel (Microsoft Inc, US) to calculate the derived slope between each of the above measures and the date of measurement.

### Statistical analysis

Data were analysed using the Statistical Package for the Social Sciences (SPSS) Version 11.5 (SPSS Inc, Chicago, IL, US). Demographic data and clinical and radiographic parameters were summarised as median (IQR). Relationships between continuous variables were assessed with Spearman's correlation coefficient and the Jonckheere-Terpstra test was used to identify trends associated with disease severity.

## RESULTS

### Trends in progression rate

The baseline characteristics of the 74 patients in the initial group are shown in table 1. There was close agreement between both densitometric parameters at baseline, with a curvilinear relationship between Perc15 and VI -950 ( $r_s = 0.994$ ,  $p < 0.001$ , fig 2).

The characteristics of the four GOLD subgroups are shown in table 2 and the results of the Jonckheere-Terpstra test are shown in table 3.

The rate of progression in FEV<sub>1</sub> was significantly associated with disease stage ( $p = 0.001$ ), with the highest decline observed in group 2 and the lowest in group 4 (table 3 and fig 3A). There was no significant trend in the rate of progression of Perc15 in association with disease stage, but the rate of progression of VI -950 was significantly associated with disease stage (table 3). There was a clear trend in the progression rate of VI -950, with a graded increase in rate in association with worsening disease stage that was observed in both the individual and combined upper and lower zone images (table 3 and fig 3C).

## CT lung density progression and its relationship with FEV<sub>1</sub> decline

The baseline characteristics of the 34 subjects with a complete data set are shown in table 4.

The annual rate of CT progression in the upper zone images correlated with the annual rate of decline in FEV<sub>1</sub> (fig 4). The best correlation was seen with Perc15 ( $r_s = 0.527$ ,  $p = 0.001$ ),

but a significant correlation was also seen with VI -950 ( $r_s = -0.398$ ,  $p = 0.012$ ). There was no correlation between changes in the lower zone images and changes in FEV<sub>1</sub> (Perc 15:  $r_s = 0.075$ ,  $p = 0.35$ ; VI -950:  $r_s = -0.251$ ,  $p = 0.09$ ). However, there was a correlation between the rate of lung density loss in the upper and lower zones (Perc 15:  $r_s = -0.473$ ,  $p < 0.001$ ; VI -950:  $r_s = 0.476$ ,  $p < 0.001$ ).

## DISCUSSION

We have shown in a cross sectional study that there is good correlation between the percentile point and voxel index techniques for assessment of lung densitometry across a wide spectrum of disease severity. Of greater importance is the curvilinear relationship (fig 2), because differences in the gradient of the curve in mild (VI -950 close to 0) and severe disease (VI -950 above 30%) suggest that the relative sensitivity of these parameters to lung density changes is dependent on disease severity—that is, in early disease when the curve is more vertical, the relative sensitivity of the Perc15 method to change is likely to be greater than the VI -950 method, but the reverse would be true in severe disease. The subgroup analysis confirms this and shows that the above relationship largely reflects the finding of consistent progression of Perc15 across the spectrum of disease severity (fig 3A) but a trend of increasing VI -950 progression in association with worsening disease stage (table 3 and fig 3C). Consequently, the sensitivity of the voxel index method to detect progression is not only threshold dependent, as shown previously,<sup>14, 18</sup> but also varies with disease severity. In contrast, the sensitivity of the percentile point method is threshold independent,<sup>14</sup> and the current study confirms the theoretical concept that it can detect changes in lung density consistently across the spectrum of disease severity. Notwithstanding this, there was wide variability in Perc15 progression rate in early disease (group 1). This may be because the subjects in group 1 were younger, with fewer index cases and lower pack year cigarette exposure (factors known to influence progression), and hence there may not have been significant loss of lung density in some patients. Nevertheless, since there is clear evidence of disease progression indicated by the decline in FEV<sub>1</sub>, an alternative explanation is that the limited sampling protocol that was employed in the programme at this time may have failed to detect the initial development of emphysema. Current understanding of the natural history of emphysema in AATD is that, in the majority of PiZ subjects, the lung bases are the site of initial change and, as the disease progresses,

**Table 2** Clinical characteristics of the GOLD subgroups expressed as median (IQR)

	Group 1 (n = 18)	Group 2 (n = 18)	Group 3 (n = 20)	Group 4 (n = 18)
Age	47 (37–57)	54 (47–61)	51 (47–57)	51 (47–52)
Index cases	7	15	17	15
Current smokers	2	2	1	3
Pack years	0 (0–5)	20 (1–29)	20 (15–36)	20 (2–28)
Sex (male)	12	16	10	13
FEV <sub>1</sub> (l)*	3.8 (2.8–4.4)	2.1 (1.8–2.3)	1.1 (1.0–1.3)	0.8 (0.6–1.0)
FEV <sub>1</sub> (% predicted)	111.3 (94.1–123.0)	61.8 (56.4–65.1)	39.1 (35.7–42.5)	25.9 (23.2–26.9)
Kco*	1.4 (1.2–1.6)	1.1 (0.9–1.5)	1.0 (0.8–1.1)	0.7 (0.5–1.0)
Kco (% predicted)	93.3 (79.2–104.8)	71.7 (60.2–94.8)	63.5 (47.5–72.2)	45.6 (35.6–62.3)
UZ Perc15	-917.9 (-935.9 to -906.2)	-942.4 (-960.1 to -920.5)	-944.3 (-969.7 to -934.4)	-961.7 (-979.6 to -947.7)
LZ Perc15	-920.1 (-938.6 to -903.0)	-968.1 (-978.7 to -944.1)	-975.7 (-979.1 to -965.5)	-976.7 (-985.6 to -967.4)
Combined Perc15	-919.3 (-937.2 to -900.2)	-955.1 (-969.2 to -932.4)	-958.8 (-972.2 to -952.3)	-969.9 (-983.7 to -957.6)
UZ VI -950	3.8 (2.6–8.8)	11.5 (4.7–20.5)	12.5 (9.0–27.8)	21.3 (14.0–34.6)
LZ VI -950	5.7 (3.4–9.9)	26.0 (11.6–38.2)	32.6 (24.6–39.2)	33.3 (26.6–44.2)
Combined VI -950	5.2 (3.0–9.4)	20.3 (9.5–29.2)	24.5 (17.9–30.8)	27.7 (20.3–44.5)

\*All lung function measurements were performed after dual bronchodilation with inhaled nebulised salbutamol (2.5 mg) and ipratropium bromide (250 µg).

Group 1: FEV<sub>1</sub> >80% predicted; Group 2: FEV<sub>1</sub> 50–79% predicted; Group 3: FEV<sub>1</sub> 30–49% predicted; Group 4: FEV<sub>1</sub> <30% predicted.

FEV<sub>1</sub>, forced expiratory volume in 1 second; Kco, lung carbon monoxide transfer factor (mmol/min/kPa/l); UZ, upper zone scans; LZ, lower zone scans; Combined, average of upper and lower zone scans; Perc15, 15th percentile point; VI -950, voxel index at a threshold of -950 HU.

**Table 3** Annual rate of disease progression related to disease severity: data expressed as median (IQR)

	Group 1	Group 2	Group 3	Group 4	JT test (p value)
FEV <sub>1</sub> rate (ml)	-83.0 (-190.8 to -32.8)	-108.9 (-234.4 to -73.5)	-54.8 (-82.4 to -17.8)	-30.6 (-45.9 to 4.9)	3.56 (p<0.001)
UZ Perc15 rate (HU)	0.8 (-4.9 to 3.3)	-3.8 (-4.7 to -1.4)	-2.9 (-4.9 to 0.1)	-3.1 (-4.5 to -0.1)	-0.5 (p=0.65)
LZ Perc15 rate (HU)	-2.1 (-5.6 to 1.5)	-1.9 (-2.8 to 1.4)	-2.4 (-4.1 to -0.2)	-0.9 (-3.6 to 1.4)	0.29 (p=0.76)
Combined Perc15 rate (HU)	-1.2 (-4.5 to 2.8)	-2.5 (-4.1 to -0.2)	-1.9 (-4.2 to -0.5)	-1.9 (-4.7 to 0.8)	-0.5 (p=0.595)
UZ VI -950 rate (%)	-0.1 (-0.5 to 0.9)	1.4 (0.5 to 2.4)	1.2 (0.2 to 2.4)	2.3 (-0.1 to 3.5)	2.85 (p=0.004)
LZ VI -950 rate (%)	0.2 (-0.5 to 0.8)	0.6 (-1.8 to 1.8)	1.3 (0.1 to 3.6)	2.2 (-0.7 to 3.4)	2.56 (p=0.018)
Combined VI -950 rate (%)	0.1 (-0.4 to 0.7)	1.1 (-0.3 to 1.9)	1.3 (0.5 to 2.7)	2.0 (0.1 to 3.9)	2.87 (p=0.004)

The number in each subgroup is as shown in table 2.

Group 1: FEV<sub>1</sub> >80% predicted; Group 2: FEV<sub>1</sub> 50–79% predicted; Group 3: FEV<sub>1</sub> 30–49% predicted; Group 4: FEV<sub>1</sub> <30% predicted.

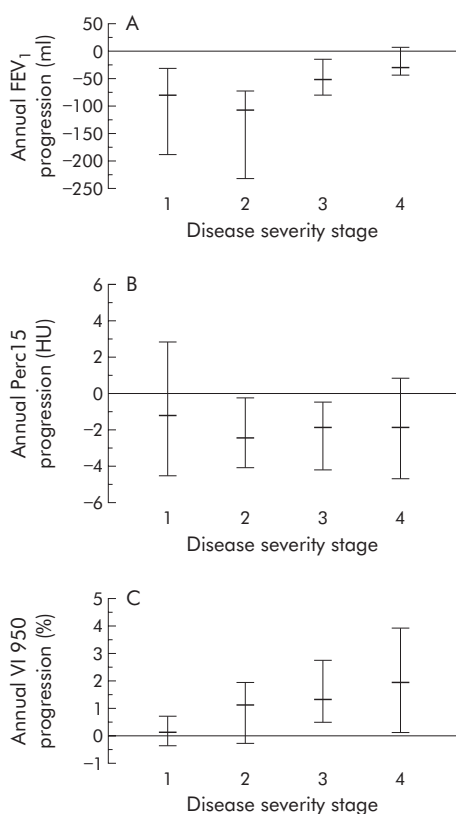
FEV<sub>1</sub>, forced expiratory volume in 1 second; VI -950, voxel index at a threshold of -950 HU; Perc15, 15th percentile point; UZ, upper zone scans; LZ, lower zone scans; Rate = annual progression rate over 2 years; Combined = average of upper and lower zone scans; JT, Jonckheere-Terpstra test.

there is increasing extension of emphysema towards the apical regions. For this reason, the upper and lower zone images were combined in an attempt to overcome the effect that these stage related changes in emphysema distribution would have on the measurement of densitometry progression using single image analysis. Despite this, similar relationships were also demonstrated in the analysis of the progression measured individually in the upper and lower zones, suggesting that this is not a reflection of a temporal process alone.

It is important to note that the rate of decline in FEV<sub>1</sub> was shown to vary in association with disease stage, and this has been recognised previously in individuals with AATD.<sup>31</sup> The

absolute change in FEV<sub>1</sub> observed in the current study, and the observed trend in decline, are similar to this previous study and indicate that our group of patients is likely to be a representative sample.

The current study shows for the first time that progression of CT densitometry relates to the rate of decline in FEV<sub>1</sub> in patients with AATD. The validation of CT densitometry against FEV<sub>1</sub> appears, at first sight, to be a tautology since CT densitometry was developed to overcome rather than to reflect the limitations of FEV<sub>1</sub>. However, the rationale for this approach is logical and deserves further scrutiny. A close correlation between CT and pathological morphometry is of fundamental importance given the morphological definition of emphysema, but the measurement of airspace dimensions is not an exact science and such studies alone may not therefore be sufficient validation. It must be acknowledged that, in the current definitions of emphysema, “an increase in airspace dimension” remains a nebulous criterion in the absence of a defined normal range. In addition, it is known that the methods used for specimen processing greatly influence airspace dimensions,<sup>32</sup> so it cannot be assumed that the correlations between clinical CT densitometry and morbid anatomy are consistent when applied to lung morphology in vivo. Furthermore, the source of lung specimens for cross sectional pathological studies does not allow comparison across the whole spectrum of disease severity since the majority of tissue originated either from necropsic or from tumour resection material. It is therefore essential to show that CT is not only representative of emphysema when



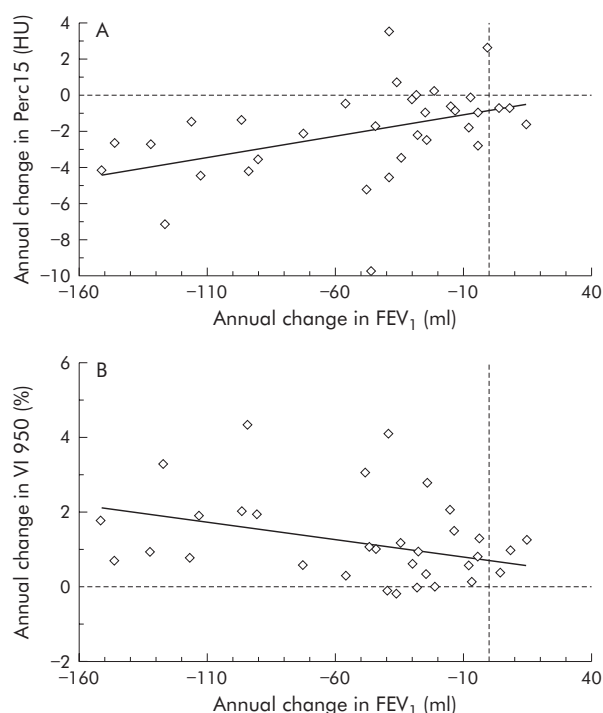
**Figure 3** Relationship between disease stage and annual progression rate measured by (A) FEV<sub>1</sub> (ml), (B) 15th percentile point (Perc15), and (C) voxel index at a threshold of -950 HU (VI -950). Data are shown as the median and interquartile range and CT progression data were derived from the average of the upper and lower zone inspiratory images. Group 1: FEV<sub>1</sub> >80% predicted (n=18); Group 2: FEV<sub>1</sub> 50–79% predicted (n=18); Group 3: FEV<sub>1</sub> 30–49% predicted (n=20); Group 4: FEV<sub>1</sub> <30% predicted (n=18).

**Table 4** Baseline clinical characteristics of the 34 PiZ subjects studied over 3 years

	Median (IQR)	Median % predicted
Age	51 (47–56)	N/A
Pack years	16 (0–26)	N/A
FEV <sub>1</sub> (l)*	1.2 (0.9–1.9)	42
VC (l)*	3.9 (3.9–4.7)	100
RV (l)*	2.7 (2.2–3.4)	126
TLC (l)*	6.9 (6.2–8.3)	117
Kco*	1.0 (0.8–1.3)	68
UZ Perc15	-942.3 (-964.9 to -926.9)	N/A
UZ VI -950	11.8 (6.2–23.9)	N/A
LZ Perc15	-969.9 (-977.6 to -943.1)	N/A
LZ VI -950	28.3 (11.5–34.1)	N/A

\*All lung function measurements were performed after dual bronchodilation with inhaled nebulised salbutamol (2.5 mg) and ipratropium bromide (250 µg).

FEV<sub>1</sub>, forced expiratory volume in 1 second; VC, vital capacity; RV, residual volume; TLC, total lung capacity (helium dilution); Kco, lung carbon monoxide transfer factor (mmol/min/kPa/l); UZ, upper zone scans; LZ, lower zone scans; Combined, average of upper and lower zone scans; Perc15, 15th percentile point; VI -950, voxel index at a threshold of -950 HU.



**Figure 4** Relationship between FEV<sub>1</sub> progression (ml/year) and annual CT progression in upper zone inspiratory images using (A) Perc15 ( $r_s = 0.527$ ,  $p = 0.001$ ) and (B) VI -950 ( $r_s = -0.398$ ,  $p = 0.012$ ),  $n = 34$ . Data were derived from four measurements over 3 years using summary statistics to calculate the progression slope for each parameter.

compared with morbid morphometry, but also that it relates to accepted clinical measurements.

Previous efforts to identify a relationship between the loss of lung density and the decline in FEV<sub>1</sub> have been hampered, almost certainly, by the variability of each measure. Demonstration of this relationship required the application of summary statistics using linear regression on repeated measures over 3 years in order to overcome the error arising from the variability that exists in both parameters. The variability in FEV<sub>1</sub> measurements is likely to be minimised by the high level of quality control applied in our physiology laboratory which ensures precision within 50 ml, whereas in routine clinical practice the accepted precision is within 100 ml.<sup>29</sup> It is recognised that the variability in CT densitometry due to sampling error and changes in inspiratory level between scans was unavoidable using a limited slice protocol, but the internal consistency of this method has been shown to be high<sup>16</sup> and it allowed repeated measures to be made while minimising radiation exposure. Furthermore, we have shown that densitometric indices derived from single image analysis relate well to whole lung analysis (data not shown).

The HRCT protocol used for densitometry in the current study has been superseded by the use of volume scanning protocols that allow adjustment of lung density measurements to a standardised lung volume. In addition, newer “low dose” scanning protocols have been shown to generate reproducible densitometry,<sup>33</sup> and edge-enhancing reconstruction algorithms have been replaced with edge-smoothing algorithms in order to reduce signal noise. Although our programme now employs a modern volume scanning protocol, there is an unavoidable interval between the adoption of newer methodology and the generation of longitudinal data. Consequently, the data reported in the current study remain unique, and notwithstanding the

limitations of the scanning protocol that was employed, an association between annual change in FEV<sub>1</sub> and CT lung densitometry was identified that was statistically significant. Furthermore, it is anticipated that improvements in scanning methodology will generate data which is even more reproducible than the HRCT protocol employed in our current and previous longitudinal studies.<sup>16</sup> For instance, in the most recent study, which used a volume scanning protocol but limited data collection to just two points spanning the period of observation, an association was found between annual change in CT lung densitometry and health status,<sup>17</sup> suggesting that the method is becoming more reliable as an indicator of progression.

The relationship between CT progression and FEV<sub>1</sub> progression was stronger for Perc15 than for VI -950. This is not unexpected given the findings of the first part of this study indicating that there is a complementary trend in progression of FEV<sub>1</sub> and Perc15 (figs 3A and B) across the spectrum of disease severity but a dissimilar trend in the progression of FEV<sub>1</sub> and VI -950 (fig 3C). In particular, in severe disease (FEV<sub>1</sub> <30% predicted) when there is a slowing of the decline in FEV<sub>1</sub>, VI -950 progression is maximal. However, the rationale behind the development of CT densitometry was to overcome rather than reflect the deficiencies of FEV<sub>1</sub>, and the differences described above should not necessarily be interpreted as disadvantageous. On the contrary, they may indicate that VI -950 is the most appropriate method for monitoring emphysema progression in subjects with severe disease.

It is surprising that the relationship between FEV<sub>1</sub> decline and CT progression was shown in the upper zone rather than the lower zone images, since impairment of FEV<sub>1</sub> relates better to CT indices of severity in the lower lung.<sup>34</sup> However, approximately two thirds of subjects with AATD have predominantly basal disease,<sup>34</sup> and the upper zone images may therefore be ideally placed in the majority of patients to monitor extension of emphysema from the lower to the upper lung regions as the disease progresses. Indeed, previous studies that showed CT densitometry to be more sensitive to progression<sup>16</sup> and a better predictor of mortality than FEV<sub>1</sub> in subjects with AATD<sup>35</sup> found that densitometric indices were more informative when derived from the upper than from the lower lung regions. When taken together, these findings may indicate that selective sampling of the upper lung region is a more sensitive method of detecting progression and treatment effects than whole lung densitometry. Nevertheless, the pattern of distribution of emphysema in subjects with AATD is not uniform,<sup>34</sup> and whole lung imaging remains necessary to characterise the distribution of emphysema in individual subjects and the natural history of progression in the different GOLD subgroups.

In summary, we have shown that, as hypothesised, Perc15 is a more consistent measure of change in lung density than VI -950 across a wide spectrum of physiological impairment. In addition, the current study validates the use of CT densitometry in longitudinal studies of emphysema by confirming that progression of change in lung density correlates with decline in the accepted “gold” standard—namely, FEV<sub>1</sub>. These data should consolidate the role of CT densitometry as a valid outcome measure in studies of the progression and treatment of emphysema.

#### Authors' affiliations

D G Parr, R A Stockley, Lung Investigation Unit, Queen Elizabeth Hospital, Birmingham B15 2TH, UK

B C Stoel, Division of Image Processing, Department of Radiology, Leiden University Medical Centre, Leiden, The Netherlands

J Stolk, Department of Pulmonology, Leiden University Medical Centre, Leiden, The Netherlands

Funding for the ADAPT programme is by a non-commercial grant from Bayer Biologicals, UK and use of the Pulmo-CMS software is supported by European Union funding (grant number RNDV.07773). RAS and JS are members of AIR.

Competing interests: none declared.

## REFERENCES

- 1 Fletcher C, Peto R. The natural history of chronic airflow obstruction. *BMJ* 1977;**1**:1645–8.
- 2 Kerstjens HA, Brand PL, Postma DS. Risk factors for accelerated decline among patients with chronic obstructive pulmonary disease. *Am J Respir Crit Care Med* 1996;**154**:S266–72.
- 3 Piitulainen E, Eriksson L. Decline in FEV<sub>1</sub> related to smoking status in individuals with severe alpha<sub>1</sub>-antitrypsin deficiency (PiZZ). *Eur Respir J* 1999;**13**:247–51.
- 4 Hogg JC, Macklem PT, Thurlbeck WM. Site and nature of airway obstruction in chronic obstructive lung disease. *N Engl J Med* 1968;**278**:1355–60.
- 5 Linhartová A, Anderson AE Jr, Foraker AG. Topology of non-respiratory bronchioles of normal and emphysematous lungs. *Hum Pathol* 1974;**5**:729–35.
- 6 Ciba Guest Symposium Report. Terminology, definitions, and classification of chronic pulmonary emphysema and related conditions. A report of the conclusions of a CIBA guest symposium. *Thorax* 1959;**14**:286–99.
- 7 Snider G, Kleinerman J, Thurlbeck W, et al. The definition of emphysema: Report of a National Heart, Lung, and Blood Institute, Division of Lung Disease Workshop. *Am Rev Respir Dis* 1985;**132**:182–5.
- 8 Gould GA, MacNee W, McLean A, et al. CT measurements of lung density in life can quantitate distal airspace enlargement: an essential defining feature of human emphysema. *Am Rev Respir Dis* 1988;**137**:380–2.
- 9 Hayhurst MD, MacNee W, Flenley DC, et al. Diagnosis of pulmonary emphysema by computed tomography. *Lancet* 1984;**2**:320–2.
- 10 Hoffman EA, McLennan G. Assessment of the pulmonary structure-function relationship and clinical outcomes measures: quantitative volumetric CT of the lung. *Acad Radiol* 1997;**4**:758–66.
- 11 Mishima M, Hirai T, Itoh H, et al. Complexity of terminal airspace geometry assessed by lung computed tomography in normal subjects and patients with chronic obstructive pulmonary disease. *Proc Natl Acad Sci USA* 1999;**96**:8229–34.
- 12 Müller NL, Staples CA, Miller RR, et al. "Density mask". An objective method to quantitate emphysema using computed tomography. *Chest* 1988;**94**:782–7.
- 13 Uppaluri R, Hoffman EA, Sonka M, et al. Interstitial lung disease: a quantitative study using the adaptive features model. *Am J Respir Crit Care Med* 1999;**159**:519–25.
- 14 Dirksen A, Friis M, Olesen KP, et al. Progress of emphysema in severe alpha<sub>1</sub>-antitrypsin deficiency as assessed by annual CT. *Acta Radiol* 1997;**38**:826–32.
- 15 Dirksen A, Dijkman JH, Madsen F, et al. A randomized clinical trial of alpha<sub>1</sub>-antitrypsin augmentation therapy. *Am J Respir Crit Care Med* 1999;**160**:1468–72.
- 16 Dowson LJ, Guest PJ, Stockley RA. Longitudinal changes in physiological, radiological, and health status measurements in alpha<sub>1</sub>-antitrypsin deficiency and factors associated with decline. *Am J Respir Crit Care Med* 2001;**164**:1805–9.
- 17 Stolk J, Ng WH, Bakker ME, et al. Correlation between annual change in health status and computer tomography derived lung density in subjects with alpha<sub>1</sub>-antitrypsin deficiency. *Thorax* 2003;**58**:1027–30.
- 18 Parr DG, Stael BC, Stolk J, et al. Influence of calibration on densitometric studies of emphysema progression using computed tomography. *Am J Respir Crit Care Med* 2004;**170**:883–90.
- 19 Gevenois PA, de Maertelaer V, De Vuyst P, et al. Comparison of computed density and macroscopic morphometry in pulmonary emphysema. *Am J Respir Crit Care Med* 1995;**152**:653–7.
- 20 Gevenois PA, De Vuyst P, de Maertelaer V, et al. Comparison of computed density and microscopic morphometry in pulmonary emphysema. *Am J Respir Crit Care Med* 1996;**154**:187–92.
- 21 Newell JD, Hogg JC, Snider GL. Report of a workshop: quantitative computed tomography scanning in longitudinal studies of emphysema. *Eur Respir J* 2004;**23**:769–75.
- 22 Shaker SB, Stavngaard T, Stolk J, et al. Alpha<sub>1</sub>-antitrypsin deficiency—7: Computed tomographic imaging in alpha<sub>1</sub>-antitrypsin deficiency. *Thorax* 2004;**59**:986–91.
- 23 Burrows B, Earle R. Course and prognosis of chronic obstructive lung disease. *N Engl J Med* 1969;**280**:397–403.
- 24 Beatty TH, Menkes HA, Cohen BH, et al. Risk factors associated with longitudinal change in pulmonary function. *Am Rev Respir Dis* 1984;**129**:660–7.
- 25 Bosse R, Sparrow D, Rose CL. Longitudinal effects of age and smoking cessation on pulmonary function. *Am Rev Respir Dis* 1981;**123**:378–81.
- 26 Camill AE, Burrows B, Knudson RJ. Longitudinal changes in forced expiratory volume in one second in adults: effects of smoking and smoking cessation. *Am Rev Respir Dis* 1987;**135**:794–9.
- 27 Tager IB, Segal MR, Spelzer FE, et al. The natural history of forced expiratory volumes. *Am Rev Respir Dis* 1988;**138**:837–49.
- 28 Dowson LJ, Newall C, Guest PJ, et al. Exercise capacity predicts health status in alpha<sub>1</sub>-antitrypsin deficiency. *Am J Respir Crit Care Med* 2001;**163**:936–41.
- 29 British Thoracic Society. Guidelines for the measurement of respiratory function. Recommendations of the British Thoracic Society and the Association of Respiratory Technicians and Physiologists. *Respir Med* 1994;**88**:165–94.
- 30 Fabbri LM, Hurd SS. Global strategy for the diagnosis, management and prevention of COPD: 2003 update. *Eur Respir J* 2003;**22**:1–2.
- 31 Buist AS, Burrows B, Eriksson S, et al. The natural history of air-flow obstruction in PiZ emphysema. Report of an NHLBI workshop. *Am Rev Respir Dis* 1983;**127**:S43–5.
- 32 Thurlbeck WM. Measurement of pulmonary emphysema. *Am Rev Respir Dis* 1967;**95**:752–64.
- 33 Stolk J, Dirksen A, van der Lugt AA, et al. Repeatability of lung density measurements with low-dose computed tomography in subjects with alpha<sub>1</sub>-antitrypsin deficiency-associated emphysema. *Invest Radiol* 2001;**36**:648–51.
- 34 Parr DG, Stael BC, Stolk J, et al. Pattern of emphysema distribution in alpha<sub>1</sub>-antitrypsin deficiency influences lung function impairment. *Am J Respir Crit Care Med* 2004;**170**:1172–8.
- 35 Dawkins PA, Dowson LJ, Guest PJ, et al. Predictors of mortality in alpha<sub>1</sub>-antitrypsin deficiency. *Thorax* 2003;**58**:1020–6.