

# PostScript

## LETTERS TO THE EDITOR

If you have a burning desire to respond to a paper published in *Thorax*, why not make use of our "rapid response" option?

Log on to our website ([www.thoraxjnl.com](http://www.thoraxjnl.com)), find the paper that interests you, and send your response via email by clicking on the "eLetters" option in the box at the top right hand corner.

Providing it isn't libellous or obscene, it will be posted within seven days. You can retrieve it by clicking on "read eLetters" on our homepage.

The editors will decide as before whether to also publish it in a future paper issue.

## Squawks in pneumonia

Squawks are short inspiratory wheezes that have been described in hypersensitivity pneumonitis and other fibrotic disorders. Little attention has been paid to the fact that they also occur in patients with pneumonia. In the course of studying the correlation of automated lung sound analysis with disease states in patients at a community teaching

hospital, we noticed that squawks appeared to be more common in patients with pneumonia than we expected. We therefore examined the occurrence of squawks more systematically in 500 subjects who had been examined with a multichannel lung sound analyser (Stethographics Model STG-1602), as previously described.<sup>1</sup>

Seventy eight of the subjects in this population had a clinical diagnosis of pneumonia. All participants had been asked to breathe more deeply than normal with their mouths open. Two 20 second samples were taken. The Institutional Review Board of the Faulkner Hospital approved the study. Two experienced observers, blinded to the clinical diagnosis, used playback and waveform displays to identify squawks. They were defined according to the criteria initially described by Earis *et al* and adopted by CORSA.<sup>2,3</sup> All channels from each subject were replayed and the waveforms of the data in the time domain were simultaneously examined. Only those sounds which fit both the auditory and waveform characteristics were considered to be squawks for the purposes of this study.

Squawks were present in 12 of the 78 patients with pneumonia and in none of 224 patients considered to have no significant lung disease. They were found in four of 18 patients with interstitial pulmonary fibrosis,

two of 41 patients with bronchial asthma, one of 79 patients with COPD, and in none of 56 patients with congestive heart failure. We also noted squawks in a patient with radiation pneumonitis and in one of the two patients in our database with hypersensitivity pneumonitis.

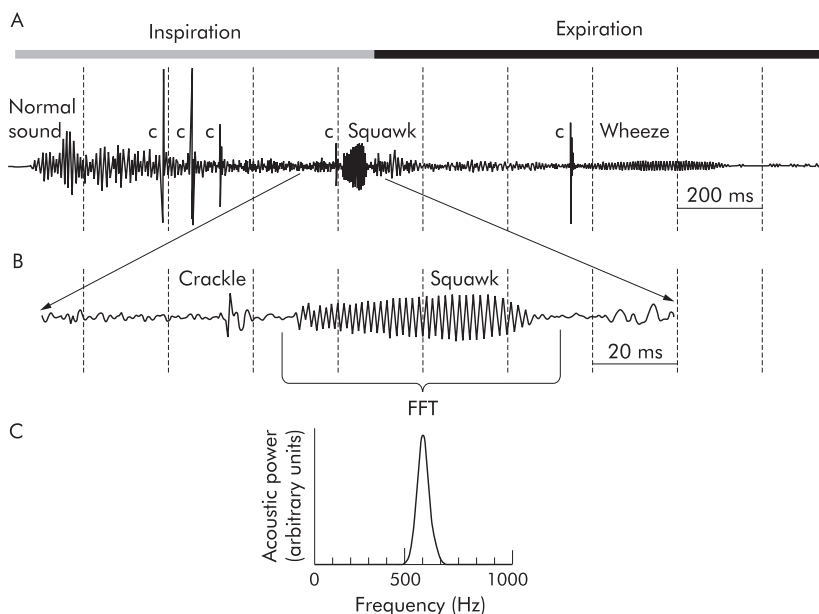
In nine of the 12 patients with pneumonia the squawks were in the same location as the radiological opacifications. In one patient the squawk was in a different location and in another the chest radiograph did not show evidence consistent with pneumonia until 4 days after the squawk was detected. In the remaining patient a squawk was heard over the left posterior mid chest. The portable chest radiograph was interpreted as technically suboptimal due to the patient's body habitus. The clinicians caring for this patient made a diagnosis of pneumonia and treated him accordingly.

Interestingly, one patient who clearly had congestive heart failure on a number of occasions had a squawk when we examined him. On re-examining his record he also had a diagnosis of pneumonia on that day. Similarly, there were two patients with squawks (one with COPD and one with asthma) who, on the day that the squawks were noted, had acute febrile illnesses consistent with pneumonia. In one patient the presence of a squawk led to reinterpretation of the chest radiograph as showing an area of opacification consistent with pneumonia.

The squawks in this study all had a distinctive sound that is readily distinguished from crackles, rhonchi, rubs, and most wheezing noises. Occasionally wheezes can be short and have a similar sound, but this occurs rarely as an isolated finding in inspiration. The squawks in this study all had sinusoidal waveforms as illustrated in the time-amplitude plot shown in fig 1. The mean (SD) duration of these sounds was 64 (49) ms (range 16–228) and the mean (SD) frequency was 425 (110) Hz (range 200–667). These findings are similar to those of Earis *et al*.<sup>3</sup>

When a squawk is accurately identified, the question arises—what does it mean? In a patient who is not acutely ill, investigations to rule out hypersensitivity pneumonitis and the other fibrotic conditions mentioned above should be considered. In a patient with a clinical picture consistent with pneumonia, the presence of a squawk offers some objective evidence to support the diagnosis. It would seem reasonable to suggest that the patient should be followed up to be sure that the squawk disappears when the acute illness resolves to exclude the possibility that the acute illness was the mode of presentation of a chronic pulmonary disorder. Squawks can be helpful in providing evidence for pneumonia in lung areas where radiological visualisation may be suboptimal, such as below the dome of the diaphragm or in the retrocardiac region.

In summary, short inspiratory wheeze-like sounds are found in pneumonia. Other conditions that can cause them are chronic restrictive disorders but these are relatively uncommon compared with pneumonia. When there is no evidence of these restrictive disorders and an acute syndrome consistent



**Figure 1** Time-amplitude plot of a sound recorded at the lung bases posteriorly (channel 14) in a patient with pneumonia. Waveforms are presented in both the unexpanded (A) and expanded (B) modes. (A) The unexpanded waveform shows one full breath. The solid bars above the unexpanded wave mark the respiratory cycle (the light bar indicates inspiration and the dark bar indicates expiration). The normal inspiratory sound can be seen as having almost random waveform fluctuations. Fine crackles (c) look like spikes on an unexpanded waveform. A squawk is present at the end of inspiration. One fine crackle and a wheeze are present during expiration. (B) The expanded squawk waveform exhibits monophonic sinusoidal fluctuations lasting approximately 60 ms. (C) The squawk sound in the frequency domain shows a single peak at 600 Hz. In this patient similar squawks appeared in three consecutive breaths during 20 s of deeper than normal breathing. They occurred approximately in the same location on the chest and at the same time in the respiratory cycle. These observations were typical of the squawks detected in our study. FFT=fast fourier transform.

with respiratory infection is present, squawks can provide relatively specific—although not very sensitive—evidence of pneumonia.

**R Paciej, A Vyshedskiy, D Bana, R Murphy**  
Faulkner/Brigham and Women Hospitals, Boston, MA, USA

Correspondence to: Dr R Murphy, 1153 Centre St, Suite 4990, Boston, MA 02130, USA; [rmurphy@faulknerhospital.org](mailto:rmurphy@faulknerhospital.org)

Supported in part by grants from NIH SBIR (1R43HL70480-01) and from Stethographics Inc.

## References

- 1 Bergstresser T, Ofengeim D, Vyshedskiy A, *et al*. Sound transmission in the lung as a function of lung volume. *J Appl Physiol* 2002;**93**:667–74.
- 2 Earis JE, Marsh K, Pearson MG. The inspiratory “squawk” in extrinsic allergic alveolitis and other pulmonary fibroses. *Thorax* 1979;**37**:923–6.
- 3 Sovijarvi AHA, Vanderschoot J, Earis JE. Computerized respiratory sound analysis (CORSA): recommended standards for terms and techniques. *Eur Respir Rev* 2000;**10**:585–649.

## BTS guidelines for the management of pleural infection

We have read the BTS guidelines for the management of pleural infection<sup>1</sup> and are concerned about the proposed antibiotic choices for the initial treatment of culture negative or pending pleural infection. Section 2.8 of the text and table 2 detail the antibiotic choices but, in our opinion, leave considerable gaps in antibacterial cover against the likely pathogens. In particular:

- Amoxicillin (text) is not reliably active against *Staphylococcus aureus*.
- Clindamycin has no activity against Gram negative aerobic organisms (especially not *Haemophilus influenzae* as mentioned in the text).
- Benzyl penicillin (table) rarely now has activity against *Staphylococcus aureus* and we suggest that relying on ciprofloxacin is unwise. In addition, this combination will not cover many anaerobic bacteria.
- We do not consider chloramphenicol is an appropriate agent to use in this category of patients in view of the serious side effect profile.
- Third generation cephalosporins such as ceftazidime and cefotaxime have unreliable activity against many anaerobic bacteria.
- Pneumococci are considerably less susceptible to ceftazidime than to other cephalosporins and penicillins<sup>2</sup>; the policy (table), however, suggests its use as a single agent.
- Piperacillin (text) is no longer available in the UK except in combination with a  $\beta$ -lactamase inhibitor.

We suggest that the antibiotic choices in the BTS guidelines for the management of pleural infection should be changed to the following:

- For community acquired pleural infection, either cefuroxime + metronidazole *or* co-amoxiclav *or* (for the penicillin/cephalosporin allergic individuals) clindamycin + ciprofloxacin, all administered intravenously. Oral treatment choices would be co-amoxiclav *or* clindamycin + ciprofloxacin.

- For hospital acquired infection, clinicians should seek guidance from the local microbiologists but the following choices would be reasonable in the interim: piperacillin + tazobactam *or* cefotaxime/ceftriaxone + metronidazole *or* meropenem.

Relating to the initial diagnosis of pleural infections, we were also concerned that mycobacteria were mentioned only once in the article. Pleural fluid has a poor yield for diagnosis of tuberculosis and more emphasis should have been placed on the routine use of pleural biopsy for histology and culture of tuberculosis which has much higher diagnostic rates. The algorithm should include the investigation of pleural tuberculosis.<sup>3</sup>

In conclusion, we would commend the inclusion of a medical microbiologist in discussions leading to guidelines dealing with the diagnosis and treatment of infections.

### H S A Roberts\*

Consultant Microbiologist, Princess Royal University Hospital, Farnborough Common, Orpington, Kent BR6 8ND, UK; [honor.roberts@bromleyhospitals.nhs.uk](mailto:honor.roberts@bromleyhospitals.nhs.uk)

\*On behalf of the Outer South East London Microbiology Group: M Viagappan, University Hospital, Lewisham; A Mackay, Queen Elizabeth Hospital, Woolwich; A Teall, Queen Elizabeth Hospital, Woolwich; H Roberts, Princess Royal University Hospital, Bromley; J Kensit, Queen Mary's Hospital, Sidcup; A Fowler, Queen Elizabeth Hospital, Woolwich; A Shaw, Darent Valley Hospital.

## References

- 1 Davies CWH, Gleeson FV, Davies RJO, *et al*. BTS guidelines for the management of pleural infection. *Thorax* 2003;**58**(Suppl II):ii18–28.
- 2 Spangler SK, Jacobs MR, Appelbaum PC. Susceptibilities of 177 penicillin-susceptible and -resistant pneumococci to FK 037, ceftiofur, cefepime, ceftriaxone, cefotaxime, ceftazidime, imipenem, biapenem, meropenem, and vancomycin. *Antimicrob Agents Chemother* 1994;**38**:898–900.
- 3 Ferrer J. Pleural tuberculosis. *Eur Respir J* 1997;**10**:942–7.

## Authors' reply

We would like to thank Dr Roberts and colleagues for their interest in the BTS guidelines on pleural infection<sup>1</sup> and for their thoughtful letter. In our view, guidelines (particularly the first set in an area) exist partly to stimulate a debate which subsequently better informs care.

Since the advisory regimens in the guidelines were first drafted (and they are “advisory” and to be used in line with local microbiological advice), the microbiology of pleural infection has been greatly clarified (not least by the joint BTS/MRC trial in pleural infection). This same work is also identifying high risk patient groups, clarifying drain type choice, and accurately defining intrapleural treatment. We have no doubt that these new data, as well as some of the points raised by Dr Roberts and colleagues, will strengthen the next revision of the BTS guidelines. The recent data show that only 10% of community acquired infections are staphylococcal, while 50% of hospital acquired infections are due to staphylococcal disease and 66% of these are MRSA infections. Thus, a regimen with limited staphylococcal cover may be appropriate in community infection (although thorough anaerobic cover is needed here), but isolated

meropenem in hospital acquired infection (suggested by Roberts and colleagues) would be ineffective for 25% of patients in this setting. Here we might currently favour vancomycin + meropenem (or similar). The BTS/MRC trial suggests that about 50% of patients with hospital acquired pleural infection are currently receiving ineffective empirical antibiotics—emphasising the importance of clarifying this issue. The suggestion of a combination of clindamycin + ciprofloxacin in community acquired infection seems a particularly elegant improvement on the regimen of clindamycin alone advocated in some US centres and mirrored in our original suggestions.

We share the view that, when the pleural infection guidelines are next updated, a microbiologist should be on the drafting panel and not only included during peer review. The drafting panel for these guidelines was a compromise between size and inclusivity in all the therapeutic areas, since it had to cover all the pleural syndromes. This, for example, led to the absence of an oncologist for the malignant effusion guideline and a physician with particular skills in cystic fibrosis for the pneumothorax guideline (again peer review was the chosen method for including these specialists). On the plus side, this led to an efficient guideline generation process. We have previously encouraged the BTS to constitute separate groups for each of the guidelines as they come up for future review for just this reason.

**R J O Davies, C W H Davies, F V Gleeson**  
Churchill Hospital, Headington, Oxford, UK

Correspondence to: Dr R J O Davies, Churchill Hospital, Headington, Oxford OX3 7LJ, UK; [robert.davies@ndm.ox.ac.uk](mailto:robert.davies@ndm.ox.ac.uk)

## Reference

- 1 Davies CWH, Gleeson FV, Davies RJO, *et al*. BTS guidelines for the management of pleural infection. *Thorax* 2003;**58**(Suppl II):ii18–28.

## Bronchodilator reversibility testing in COPD

In their paper on bronchodilator reversibility testing in COPD, Calverley and colleagues<sup>1</sup> come to the intuitively sensible conclusion that, in severe COPD, bronchodilator responsiveness is a continuous variable. However, this conclusion is based on an analysis in which the change in forced expiratory volume in 1 second (FEV<sub>1</sub>) effected by inhalation of a bronchodilator aerosol is related to the baseline (that is, initial) level. As a result, the reported bronchodilator responses are subject to the error that can result from regression to the mean.<sup>2</sup> The error can be minimised by relating the change to the mean level instead of the initial level, and it would be reassuring to see the data expressed in this form.

### J E Cotes

Cell and Molecular Biosciences, Medical School, Newcastle upon Tyne, UK; [coterie@globalnet.co.uk](mailto:coterie@globalnet.co.uk)

## References

- 1 Calverley PMA, Burge PS, Spencer S, *et al*. Bronchodilator reversibility testing in chronic obstructive pulmonary disease. *Thorax* 2003;**58**:659–64.

- 2 **Oldham PD.** A note on the analysis of repeated measurements of the same subjects. *J Chronic Dis* 1962;15:969-77.

## Authors' reply

We thank Dr Cotes for his interest in our work<sup>1</sup> and his thoughtful comments. We did not include the suggested analysis as our purpose was to address the utility of a single bronchodilator reversibility test which is the way this is applied in routine practice. We agree that regression to the mean is a real possibility, but also believe that physiological variation in baseline airway calibre contributes to the "noise" in this particular signal. Unfortunately the number of times this test must be undertaken to minimise these confounding effects is not clear, but is likely to be too large to be possible in most clinics. Hence our caution about interpreting the significance of small changes in spirometry recorded on one visit.

**P M A Calverley**

Department of Medicine, Clinical Sciences Centre, University Hospital, Aintree, Liverpool L9 7AL, UK; pmacal@liverpool.ac.uk

## Reference

- 1 **Calverley PMA, Burge PS, Spencer S, et al.** Bronchodilator reversibility testing in chronic obstructive pulmonary disease. *Thorax* 2003;58:659-64.

## Prednisolone response in patients with COPD

Our interpretation of the important data on corticosteroid responsiveness in chronic obstructive pulmonary disease (COPD) presented by Burge *et al*<sup>1</sup> is quite different from that of the authors. They have shown that those with an improvement in forced expiratory volume in 1 second (FEV<sub>1</sub>) of >20% following short term treatment with prednisolone had a more significant reduction in exacerbation frequency with longer term treatment with inhaled fluticasone than those without. Thus, arguably, the only important positive clinical outcome of long term treatment of COPD with inhaled corticosteroids is largely confined to those who are identified by a positive response to prednisolone. This is a powerful validation of the suggestion in current guidelines<sup>2</sup> that decisions on the use of long term inhaled corticosteroid therapy are based on a careful assessment of the response to short term treatment with prednisolone.

Clinicians will continue to use short term prednisolone trials in patients with unclassified, apparently fixed, airflow obstruction since this is the only practical way to identify the minority with markedly corticosteroid responsive disease. The data presented by Burge *et al* are important in that they show that smaller responses to prednisolone can provide additional useful clinical guidance. They also suggest that the mechanism of the bronchodilator response to prednisolone might have features in common with the mechanism of inhibition of COPD exacerbations with corticosteroids. We have recently shown that the improvement in FEV<sub>1</sub> and quality of life scores seen with prednisolone compared with placebo in COPD increases progressively with increasing eosinophilic airway inflammation, and is associated with amelioration in eosinophilic airway

inflammation as reflected by a sixfold reduction in the induced sputum eosinophil count.<sup>3</sup> Future studies should investigate whether treatment targeting eosinophilic airway inflammation in COPD results in a reduction in exacerbations, as it has clearly been shown to do in asthma.<sup>4</sup>

**I D Pavord, R Siva, C E Brightling**

Institute for Lung Health, Glenfield Hospital, Leicester, UK

Correspondence to: Dr I D Pavord, Institute for Lung Health, Glenfield Hospital, Leicester, UK; ian.pavord@uhl-tr.nhs.uk

## References

- 1 **Burge PS, Calverley PMA, Jones PW, et al.** Prednisolone response in patients with chronic obstructive pulmonary disease: results from the ISOLDE study. *Thorax* 2003;58:654-8.
- 2 **British Thoracic Society.** Guidelines for the management of chronic obstructive pulmonary disease. *Thorax* 1997;52(Suppl 5):S1-28.
- 3 **Brightling CE, Monterio W, Ward R, et al.** Sputum eosinophilia and the short-term response to prednisolone in chronic obstructive pulmonary disease: a randomised controlled trial. *Lancet* 2000;356:1480-5.
- 4 **Green RH, Brightling CE, McKenna S, et al.** Asthma exacerbations and sputum eosinophil counts. A randomised controlled trial. *Lancet* 2002;360:1715-23.

## Authors' reply

We thank Dr Pavord and colleagues for their letter.<sup>1</sup> We were asked to add the section relating the effect of prednisolone response to fluticasone related exacerbation prevention by the papers' referees. We originally omitted this as there was no relationship between the effect of exacerbation reduction and prednisolone response when prednisolone response was expressed as a continuous variable ( $p=0.84$ ), and we were worried that the analysis based on responders and non-responders would result in misinterpretation, which unfortunately has been the case. The main conclusion from the paper is that any separation of the patients into responder and non-responder groups is statistically flawed. The response is unimodally distributed and individual changes between two visits (that is, before and after prednisolone) suffer from the regression to the mean effect. We showed good evidence that this was in fact occurring, with "responders" declining by a mean 127 ml in the 4 weeks before prednisolone, while those in whom forced expiratory volume in 1 second (FEV<sub>1</sub>) was reduced by >20% after prednisolone had a 47 ml increase in FEV<sub>1</sub> in the preceding 4 weeks. The most likely explanation for the spurious relationship between exacerbation reduction and prednisolone response related to confounding by a low FEV<sub>1</sub>. Responders were classified as those with a 20% increase in FEV<sub>1</sub> as a percentage of the starting value favouring a "response" in those with the lowest FEV<sub>1</sub> (a change from 0.8 to 0.96 l in the lowest group) and exacerbations are also more frequent in those with a lower FEV<sub>1</sub>. A clinical decision made on a steroid trial is not a reliable, reproducible, or valid way of separating out "responders" and so cannot be recommended.

**P S Burge**

Birmingham Heartlands Hospital, Bordesley Green East, Birmingham, UK

**P M A Calverley**

University Hospital, Aintree, Liverpool, UK

**P W Jones, S Spencer**

St George's Hospital Medical School, London, UK

Correspondence to: Professor P S Burge, Birmingham Heartlands Hospital, Bordesley Green East, Birmingham B9 5ST, UK; Sherwood.burge@heartsol.wmids.nhs.uk

## Reference

- 1 **Burge PS, Calverley PMA, Jones PW, et al.** Prednisolone response in patients with chronic obstructive pulmonary disease: results from the ISOLDE study. *Thorax* 2003;58:654-8.

## Breathing exercises in asthma

It was a pleasure to read a report of a well conducted trial into a complementary treatment for asthma.<sup>1</sup> This is a subject which attracts considerable media attention. The authors of this report and the author of an accompanying editorial<sup>2</sup> both introduce their articles with a reference to "a third of respondents in a recent asthma survey having tried one or more breathing techniques to relieve symptoms".<sup>3</sup> While their quote is correct, the report to which they refer is of a survey of members of the UK National Asthma Campaign. Such a membership may not be typical of those with asthma. In a more recent study of a stratified cross section of the asthma population we found only 6% of the study population to be current users of complementary therapies. That use was greatest among those who expressed most concern regarding their current medication.<sup>4</sup>

**M R Partridge**

Imperial College London, NHLI, Charing Cross Hospital Campus, London W6 8RP, UK; m.partridge@imperial.ac.uk

## References

- 1 **Cooper S, Osborne J, Newton S, et al.** Effect of two breathing exercises (Butekyo and pranayama) in asthma: a randomised controlled trial. *Thorax* 2003;58:674-9.
- 2 **Thomas M.** Breathing exercises and asthma. *Thorax* 2003;58:649-50.
- 3 **Ernst E.** Complementary therapies for asthma: what patients use. *J Asthma* 1998;35:667-71.
- 4 **Partridge MR, Dockrell M, Smith NM.** The use of complementary medicines by those with asthma. *Respir Med* 2003;97:436-8.

## CORRECTION

### $\alpha_1$ -Antitrypsin deficiency: paper by Stolk *et al*

In the paper entitled "Correlation between annual change in health status and computer tomography derived lung density in subjects with  $\alpha_1$ -antitrypsin deficiency" by J Stolk *et al* which appeared in the December 2003 issue of *Thorax* on pages 1027-30, the affiliation address for J Stolk, W H Ng and K F Rabe on page 1030 and the correspondence address on page 1027 should have been Department of Pulmonology, Leiden University Medical Center and not Department of Radiology and Division of Image Processing. The publishers apologise for this error.