

Thorax

The Journal of the British Thoracic Society

A Registered Charity

President: Brian H R Stack

Executive editors

J R Britton
A J Knox

Associate editors

N C Barnes
S Elborn
J M FitzGerald
J A Fleetham
N M Foley
S W Fountain
I Hall
B G Higgins
J R Lamb
S A Lewis
P D Sly
D P Strachan
W Wedzicha

Editorial assistants

Laura Lee
Hilary Hughes

Technical editor

Elizabeth Stockman

Editorial board

J H Alpers, Australia
N Ambrosino, Italy
J N Baraniuk, USA
P J Barnes, UK
E D Bateman, South Africa
R Beasley, New Zealand
L Brochard, France
A S Buist, USA
P S Burge, UK
E R Chilvers, UK
T Coleman, UK
D B Coultas, USA
S-E Dahlen, Sweden
R J O Davies, UK
P-P B Ernst, Canada
T W Evans, UK
A J Frew, UK
D M Geddes, UK
P Goldstraw, UK
Q A Hamid, Canada
J C Hogg, Canada
S T Holgate, UK
S Johnston, UK
G J Laurent, UK
P Le Souëf, Australia
B J Lipworth, UK
D A Lomas, UK
F D Martinez, USA
D M Mitchell, UK
A Morice, UK
S Nagai, Japan
S Nava, Italy
R Panettieri, USA
M R Partridge, UK
A J Peacock, UK
C Persson, Sweden
T A E Platts-Mills, USA
G Raghu, USA
G Rizzato, Italy
D F Rogers, UK
R M Rudd, UK
B Schönhofer, Germany
T Sethi, UK
S O Shaheen, UK
C M Smith, USA
K R Smith, USA
T Tetley, UK
M J Tobin, USA
A Torres, Spain
E von Mutius, Germany
E H Walters, Australia
S T Weiss, USA
A Wells, New Zealand
M Whyte, UK
A A Woodcock, UK
M Woodhead, UK
Editor, *BMJ*

Instructions to authors

Full instructions are available online at www.thoraxjnl.com/misc/ifora.shtml
If you do not have web access please contact the editorial office:
Executive Editors
Thorax Editorial Office
Division of Respiratory Medicine
City Hospital, Nottingham NG5 1PB, UK
Telephone +44 (0)115 840 4768
Fax +44 (0)115 840 4767
Email: thorax@bmjgroup.com

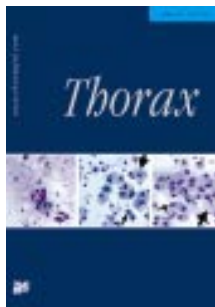
Subscription information

See page ii

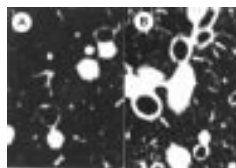
Copyright

© 2002 *Thorax*. All rights reserved; no part of this publication may be reproduced, stored in a retrieval system, or transmitted in any form or by any means, electronic, mechanical, photocopying, recording, or otherwise without the prior permission of *Thorax*
Authors are required to grant *Thorax* an exclusive licence to publish; further details available online at www.thoraxjnl.com/misc/ifora.shtml

- Thorax is published by BMJ Publishing Group and printed in UK on acid free paper by Cambrian Printers, Aberystwyth
- Periodicals postage paid, Rahway, NJ. Postmaster: send address changes to: *Thorax*, c/o Mercury Airfreight International Ltd, 365 Blair Road, Avenel, NJ 07001, USA



See p 277



See p 242

contents THORAX

Volume 57 Number 3 March 2002

Editorials

- 189 Macrolide antibiotics and cystic fibrosis
D G Peckham
- 190 Psychological factors in asthma control and attack risk
L M Osman

BTS guideline

- 192 Non-invasive ventilation in acute respiratory failure
British Thoracic Society Standards of Care Committee

Original articles

- 212 Effect of long term treatment with azithromycin on disease parameters in cystic fibrosis: a randomised trial
J Wolter, S Seeney, S Bell, S Bowler, P Masel, J McCormack
- 217 Attack context: an important mediator of the relationship between psychological status and asthma outcomes
C J Greaves, C Eiser, D Seamark, D M G Halpin
- 222 Laser acupuncture in children and adolescents with exercise induced asthma
W Gruber, E Eber, D Malle-Scheid, A Pflieger, E Weinhandl, L Dorfer, M S Zach
- 226 Influence of cigarette smoking on inhaled corticosteroid treatment in mild asthma
G W Chalmers, K J Macleod, S A Little, L J Thomson, C P McSharry, N C Thomson
- 231 Occupational asthma due to low molecular weight agents: eosinophilic and non-eosinophilic variants
W Anees, V Huggins, I D Pavord, A S Robertson, P S Burge
- 237 Additive anti-inflammatory effect of formoterol and budesonide on human lung fibroblasts
F M Spoelstra, D S Postma, H Hovenga, J A Noordhoek, H F Kauffman
- 242 Correlation between the bronchial subepithelial layer and whole airway wall thickness in patients with asthma
K Kasahara, K Shiba, T Ozawa, K Okuda, M Adachi
- 247 High resolution computed tomographic assessment of airway wall thickness in chronic asthma: reproducibility and relationship with lung function and severity
S A Little, M W Sproule, M D Cowan, K J Macleod, M Robertson, J G Love, G W Chalmers, C P McSharry, N C Thomson
- 254 Inspiratory muscle maximum relaxation rate measured from submaximal sniff nasal pressure in patients with severe COPD
D Kyroussis, L C Johnson, C-H Hamnegard, M I Polkey, J Moxham
- 258 Effect of assist negative pressure ventilation by microprocessor based iron lung on breathing effort
M Gorini, G Villella, R Ginanni, A Augustynen, D Tozzi, A Corrado

- 263 Serum sialyl Lewis X-i antigen in lung adenocarcinoma and idiopathic pulmonary fibrosis *H Satoh, H Ishikawa, Y T Yamashita, M Ohtsuka, K Sekizawa*

Review series

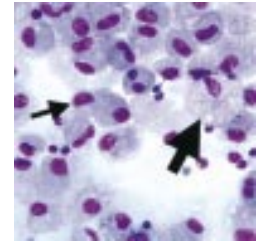
- 267 The pulmonary physician in critical care • 3: Critical care management of community acquired pneumonia *S V Baudouin*

Occasional review

- 272 Proportional assist ventilation (PAV): a significant advance or a futile struggle between logic and practice? *N Ambrosino, A Rossi*

Case report

- 277 BAL findings in a patient with pulmonary alveolar proteinosis successfully treated with GM-CSF *O D Schoch, U Schanz, M Koller, K Nakata, J F Seymour, E W Russi, A Boehler*



See p 277

Letters to the editor

- 281 Omega-3s and childhood asthma *C Mermer, J Mercola*
- 281 Mechanical insufflation *C Castro, J R Bach*
- 282 Diagnosing TB *P Davies*
- 282 Inhaled sodium cromoglycate in children with asthma *A Edwards, M Stevens, S Holgate, Y Iikura, N Åberg, P König, D Reinhardt, B Stenius-Aarniala, J Warner, E Weinberg, B Callaghan, J Howell*