

# Pulmonary $^{99m}\text{Tc}$ -DTPA aerosol clearance and survival in usual interstitial pneumonia (UIP)

N Mogulkoc\*, M H Brutsche, P W Bishop, B Murby, M S Greaves, A W Horrocks, M Wilson, C McCullough, M Prescott, J J Egan, on behalf of the Greater Manchester Pulmonary Fibrosis Consortium

North West Lung Research Centre, South Manchester University Hospitals NHS Trust, Manchester, UK  
N Mogulkoc  
M H Brutsche  
J J Egan

Department of Pathology, South Manchester University Hospitals NHS Trust  
P W Bishop

Department of Radiology, South Manchester University Hospitals NHS Trust  
M S Greaves  
A W Horrocks  
C McCullough  
M Wilson

North Western Medical Physics, Christie Hospital NHS Trust, Manchester, UK  
B Murby

Department of Nuclear Medicine, Manchester Royal Infirmary, Manchester, UK  
M Prescott

\*Dr Mogulkoc performed this work while a visiting researcher from the Department of Chest Diseases, Ege University Hospital, Izmir, Turkey

Correspondence to: Dr N Mogulkoc, North West Lung Research Centre, Wythenshawe Hospital, Southmoor Road, Wythenshawe, Manchester M23 9LT, UK  
100046.1102@compuserve.com

Received 16 October 2000  
Returned to authors 15 February 2001  
Revised version received 5 April 2001  
Accepted for publication 27 June 2001

## Abstract

**Background**—Clearance of inhaled technetium  $^{99m}$ -labelled diethylenetriamine penta-acetic acid ( $^{99m}\text{Tc}$ -DTPA) from the lungs is a potential indicator of disease progression in patients with idiopathic pulmonary fibrosis (IPF).

**Methods**—We prospectively analysed the usefulness of this technique for predicting survival in 106 non-smoking patients with usual interstitial pneumonia (UIP) pattern IPF diagnosed by high resolution CT (HRCT) scanning or histological examination (M/F 65/41, mean (SD) age 61 (11) years). DTPA clearance was analysed according to both mono-exponential and bi-exponential models. Half times for the fast ( $t_{0.5F}$ ) and slow ( $t_{0.5S}$ ) components of clearance, the percentage contribution of the fast component ( $f$ ), and half time for mono-exponential approximation to the early part of the clearance curve ( $t_{0.5}$ ) were calculated.

**Results**—The patients had substantially faster  $t_{0.5}$  (mean 23.9 (9.6) minutes) than normal values (>45 minutes). Thirty seven patients (35%) died during follow up (median 15 months). Univariate Cox regression analysis identified significant predictors of survival as age, forced expiratory volume in 1 second ( $\text{FEV}_1$ ), forced vital capacity (FVC), total lung capacity (TLC), % predicted TLC, carbon monoxide transfer factor (TLCO), % predicted TLCO, arterial oxygen tension ( $\text{PaO}_2$ ), oxygen saturation,  $t_{0.5F}$ , and HRCT fibrosis score. Multiple stepwise Cox regression analysis identified  $t_{0.5F}$  ( $p=0.03$ , hazard ratio 0.747, 95% CI 0.578 to 0.964), % predicted TLC ( $p=0.02$ , hazard ratio 0.976, 95% CI 0.956 to 0.995), % predicted TLCO ( $p=0.003$ , hazard ratio 0.960, 95% CI 0.935 to 0.986), and age ( $p=0.003$ , hazard ratio 1.062, 95% CI 1.021 to 1.104) as independent predictors of survival.

**Conclusion**—These data suggest that  $^{99m}\text{Tc}$ -DTPA clearance  $t_{0.5F}$  measurement may predict survival in patients with UIP pattern IPF.

(Thorax 2001;56:916-923)

Keywords: idiopathic pulmonary fibrosis; cryptogenic fibrosing alveolitis;  $^{99m}\text{Tc}$ -DTPA clearance; survival

Idiopathic pulmonary fibrosis (IPF), cryptogenic fibrosing alveolitis, is a progressive, fatal, and increasingly common disease.<sup>1 2</sup>

Recent revision of the histological classification of IPF has emphasised the clinical importance of the different histological patterns of usual interstitial pneumonia (UIP), desquamative interstitial pneumonia (DIP), and non-specific interstitial pneumonia/fibrosis (NSIP).<sup>3</sup> The critical differences between these histological subcategories lie in the potential responsiveness to steroids and in survival.<sup>4</sup> UIP pattern IPF has a poor prognosis with a median survival of 2.8 years, and 65% of patients with IPF fall in this group.<sup>4</sup>

Predicting survival in IPF is difficult. To date, pulmonary function, high resolution CT (HRCT) scans, and response to treatment have been used as surrogates for estimating survival.<sup>5-8</sup>

Clearance of inhaled technetium  $^{99m}$ -labelled diethylenetriamine penta-acetic acid ( $^{99m}\text{Tc}$ -DTPA) is an index of lung epithelial permeability.<sup>9</sup> Increased DTPA clearance may be a sensitive marker of inflammation<sup>10</sup> and normal clearance certifies absence of inflammation.<sup>11</sup> It has been used in the repertoire of investigations in a number of diffuse parenchymal lung diseases<sup>12-16</sup> and could potentially be used as a predictor for disease progression in UIP. A previous study of DTPA in a heterogeneous group of patients with IPF showed that normal DTPA clearance selects patients with a favourable prognosis.<sup>15</sup>

The objective of this study was to evaluate the potential of  $^{99m}\text{Tc}$ -DTPA scanning to predict survival in patients with UIP pattern IPF. Our study differs from earlier studies in that we have resolved the clearance of  $^{99m}\text{Tc}$ -DTPA into its fast and slow components and have analysed the prognostic significance of each component of clearance independently. In addition, we wished to determine whether DTPA clearance correlated with pulmonary function, HRCT scores, and the cellular characteristics of bronchoalveolar lavage (BAL) fluid.

## Methods

### PATIENT SELECTION CRITERIA

Patients with either histological evidence of UIP pattern IPF or an HRCT scan highly suggestive of UIP pattern IPF were included in the study. Patients were excluded if any of the following were present: (1) collagen vascular disease, allergic alveolitis or exposure to organic dusts, (2) co-existing heart failure, active pulmonary infection, or pneumothorax causing the functional abnormalities at presentation, (3) current smoking (during the 6 months

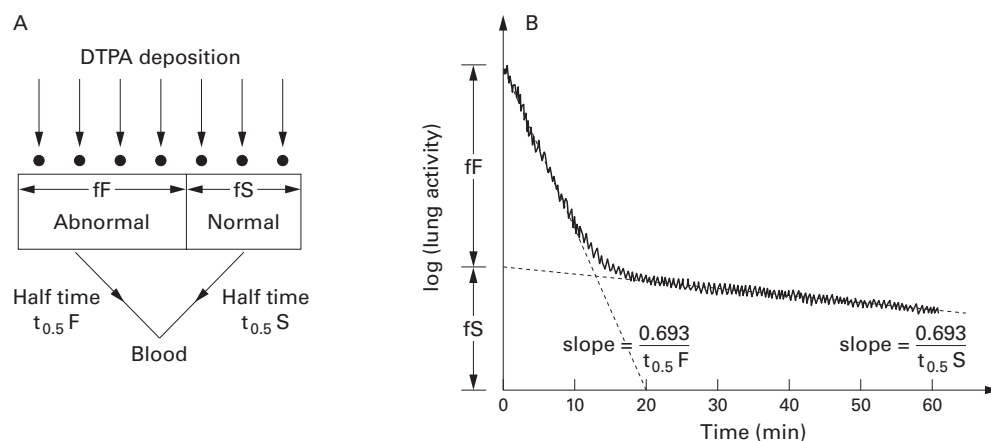


Figure 1 Schematic representation of the two component system. (A) DTPA is deposited onto normal and abnormal tissues and cleared by slow and fast processes. (B) Fractional depositions and speeds of the processes can be calculated from time variation of lung activity.

prior to the measurement of DTPA clearance). Patients were secondarily excluded on the following criteria: (1) a subsequent pulmonary tissue diagnosis other than UIP pattern IPF, (2) an objective response to corticosteroids alone, and (3) those who subsequently underwent lung transplantation.

#### SURGICAL LUNG BIOPSIES

Surgical lung biopsy specimens were obtained either through a thoracotomy incision or by video assisted thoracoscopic surgery. The site of the biopsy was directed by HRCT scanning.

#### Definition of UIP pattern IPF by histological criteria

A diagnosis of UIP was made if the following histopathological features were present<sup>3</sup>: (a) a variegate picture of interstitial fibrosis, inflammation and normal tissue; (b) a tendency for fibrosis to occur in a subpleural and peripheral distribution; (c) exclusion of features indicating another aetiology (e.g. asbestos bodies, granulomas).

#### HRCT SCANNING

All included patients underwent HRCT scanning of the chest using a Picker PQ scanner (Picker International). The HRCT scans

consisted of 1.5 mm thick slices acquired at 10 mm increments through the thorax reconstructed with a high spatial frequency algorithm. Scans were performed at the end of inspiration with the patients in the supine position and no intravenous contrast was given. The HRCT scans were reviewed independently by two pulmonary radiologists (MSG and AWH) who were unaware of the clinical and functional findings.

#### Definition of UIP pattern IPF by HRCT criteria

A diagnosis of UIP was made if the following HRCT features were present<sup>17,18</sup>:

- (a) reticular pattern of intralobular interstitial thickening demonstrating a peripheral, subpleural, and basal predominance with irregular pleuroparenchymal interfaces;
- (b) may show areas of honeycombing and traction bronchiectasis;
- (c) ground glass opacification may be present but the reticular pattern predominates.

The same radiologists scored each lobe of the lung for the extent of ground glass opacity (HRCT ground glass score) and reticular opacities and honeycombing (HRCT fibrosis score) on a scale of 0–5 based on the method described by Kazerooni *et al.*<sup>19</sup> The mean value for all lobes was incorporated into a ground glass and fibrotic score for each patient and scores were then averaged for the two readers.

#### PULMONARY PHYSIOLOGY

Pulmonary function tests were performed at the start of the study at the same visit as the radiological examination. Spirometric tests (Sensormedics Vmax 22, California, USA), plethysmographic lung volumes (Sensormedics 6200 Plethysmograph) and carbon monoxide lung transfer factor (TLCO) (PK Morgan, Rainham, UK) were measured in all patients. Alveolar volume (VA) was measured by a single breath helium dilution method and transfer coefficient (KCO) was calculated from TLCO/VA. TLCO values were corrected for the haemoglobin concentration of the patient. Values were expressed as percentages of the predicted values calculated according to sex, weight, and age.<sup>20</sup> All but four patients had blood gas analyses at rest while breathing room air using

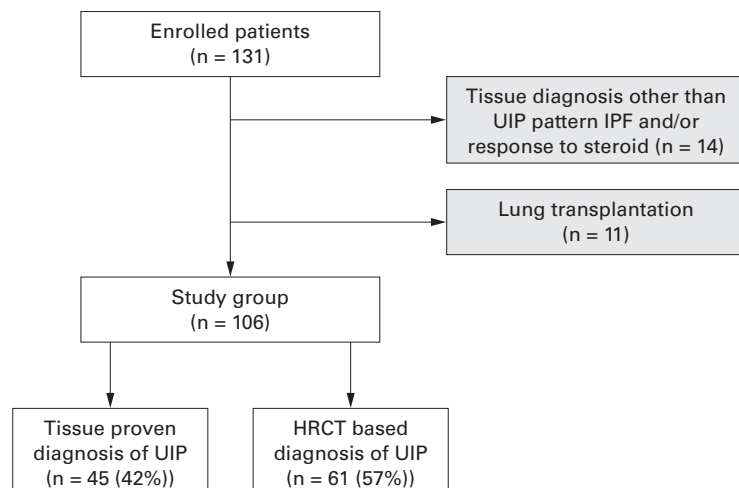


Figure 2 Patient flow through the enrolment process to make up the study group.

Table 1 Patient characteristics (n=106)

Evaluated parameter	Number (%)	Mean (SD)	Range
Age (years)		61 (11)	19–81
Male/female	65/41		
Diagnosis based on histology	45 (42)		
Open lung biopsy	32 (30)		
Necropsy	6 (6)		
Transbronchial biopsy	7 (7)		
Diagnosis based on HRCT findings alone	61 (57)		
Smoking history	106 (100)		
Never smokers	37 (35)		
Ex-smokers	69 (65)		
Follow up (months)†		15.0	0.5–56.9
Pulmonary function	105 (99)		
FEV <sub>1</sub> (l)		2.0 (0.6)	1.0–3.8
FEV <sub>1</sub> (% predicted)		76 (22)	31–133
FVC (l)		2.5 (0.9)	1.1–5.7
FVC (% predicted)		76 (24)	28–141
TLC (l)		4.1 (1.2)	1.8–8.7
TLC (% predicted)		74 (21)	29–133
Tlco (mmol/kPa/min)		4.0 (1.6)	1.0–9.7
Tlco (% predicted)		48 (16)	12–102
Kco (mmol/kPa/min/l)		1.1 (0.4)	0.4–2.1
Kco (% predicted)		79 (24)	34–146
Blood gas analysis	102 (96)		
Pao <sub>2</sub> (kPa)		8.7 (1.6)	4.9–12.1
Paco <sub>2</sub> (kPa)		4.9 (0.6)	2.8–6.8
Sao <sub>2</sub> (%)		94 (4)	73–99
BAL differential cell counts	79 (75)		
Macrophages (%)†		58	12–87
Neutrophils (%)†		15	1–84
Lymphocytes (%)†		6	0–59
Eosinophils (%)†		3	0–43
HRCT score	71 (67)		
HRCT fibrosis score		2.0 (0.7)	0.5–3.5
HRCT ground glass score		3.1 (1.2)	0.8–5.0

†Median values are given for non-normally distributed data.

FEV<sub>1</sub> = forced expiratory volume in one second; FVC = forced vital capacity; TLC = total lung capacity; Tlco = carbon monoxide lung transfer factor; Kco = carbon monoxide transfer coefficient; Pao<sub>2</sub> = arterial oxygen tension; Paco<sub>2</sub> = arterial carbon dioxide tension; Sao<sub>2</sub> = oxygen saturation; BAL = bronchoalveolar lavage; HRCT = high resolution CT.

the end capillary (earlobe) technique (ABL330 Acid-Base Laboratory, Copenhagen, Denmark).

#### <sup>99m</sup>Tc-DTPA SCANNING

An aerosol of <sup>99m</sup>Tc-DTPA was produced using pressurised air. The jet nebuliser produces an aerosol with a median aerodynamic diameter of less than 1 µm. Patients were seated in front of a gamma camera and inhaled the aerosol during normal tidal breathing through a mouthpiece with a one way valve and noseclip in place. Administration continued for up to 5 minutes or until a suitable count rate was detected over the lungs. Patients were then imaged from the posterior side using a gamma camera with general purpose collimator. Images were acquired for 60 minutes at an image resolution of 64 × 64 using a frame duration of 20 seconds for at least the first 15 minutes. Regions of interest were then drawn around both lungs and a region was defined either between the kidneys or in the shoulders to enable suitable subtraction of background activity. Solute clearance was calculated from the rates of radionuclide disappearance from

Table 2 <sup>99m</sup>Tc-DTPA clearance rates of study subjects

DTPA clearance variables	Mean (SD)	Range
t <sub>0.5</sub> (min)	23.9 (9.6)	9.4–66.4
t <sub>0.5F</sub> (min)	5.6 (1.5)	1.2–10.7
t <sub>0.5S</sub> (min)	54.1 (13.3)	30.5–105.0
fF (%)	39 (18)	11–83

t<sub>0.5</sub> = half time for mono-exponential approximation to the early part of the DTPA clearance curve; t<sub>0.5F</sub> = half time for fast component of bi-exponential DTPA clearance curve; t<sub>0.5S</sub> = half time for slow component of bi-exponential DTPA clearance curve; fF = fraction of tracer cleared by fast component.

the lungs. Clearance rates obtained from each individual refer to both mono-exponential and bi-exponential clearance analyses. Curve stripping was used to separate the two components of the bi-exponential disappearance curves. Briefly, the slow component can be identified from the later section of the 60 minute curve, usually taking the last 30 minutes. The contribution of the slow component to the early part of the curve can then be calculated and subtracted out, isolating the fast component.

Four DTPA variables were analysed. These were half times for (1) the fast (t<sub>0.5F</sub>) and (2) the slow (t<sub>0.5S</sub>) components of the bi-exponential curve, (3) the fraction of the tracer cleared by the fast (fF) component, and (4) the half time from a mono-exponential approximation to the early part of the curve (t<sub>0.5</sub>).

The clearance half times t<sub>0.5F</sub> and t<sub>0.5S</sub> were defined as the time to achieve a 50% decrease in the fast and slow components of the curve, respectively. fF and fS were defined as the respective fractions of tracer cleared into the “fast” or “slow” components (fig 1). The half time from a mono-exponential approximation to the first 15 minutes of the curve was also calculated. The normal half time value for this parameter is more than 45 minutes.<sup>21</sup>

#### BRONCHOALVEOLAR LAVAGE

Bronchoalveolar lavage was performed by a standard method. In brief, patients were premedicated with atropine and midazolam and the upper airway was anaesthetised with 4% lidocaine (lignocaine). Two aliquots of 50 ml warm sterile saline were instilled into the

Table 3 Variables significantly and not significantly associated with survival by univariate Cox regression analysis

Evaluated parameter	Hazard ratio	95% CI	p value
<i>Variables significantly associated with survival</i>			
Age (years)	1.037	1.002 to 1.072	0.04
Pulmonary function			
FEV <sub>1</sub> (l)	0.467	0.254 to 0.859	0.01
FVC (l)	0.553	0.349 to 0.876	0.01
TLC (l)	0.682	0.497 to 0.935	0.02
TLC (% predicted)	0.980	0.962 to 0.997	0.03
TLCO (mmol/kPa/min)	0.630	0.480 to 0.826	0.0008
TLCO (% predicted)	0.956	0.933 to 0.979	0.0003
Blood gas analysis			
PaO <sub>2</sub> (kPa)	0.661	0.532 to 0.821	0.0002
Sao <sub>2</sub> (%)	0.895	0.847 to 0.945	0.0001
HRCT score			
HRCT fibrosis score	1.862	1.054 to 3.290	0.03
DTPA clearance			
T <sub>0.5</sub> F (min)	0.795	0.633 to 0.997	0.04
<i>Variables not significantly associated with survival</i>			
Male sex	0.778	0.402 to 1.509	0.458
Never smoking	1.076	0.545 to 2.119	0.832
Pulmonary function			
FEV <sub>1</sub> (% predicted)	0.988	0.971 to 1.005	0.166
FVC (% predicted)	0.987	0.971 to 1.002	0.091
Kco (mmol/kPa/min/l)	0.466	0.173 to 1.251	0.130
Kco (% predicted)	0.993	0.978 to 1.008	0.336
Blood gas analysis			
Paco <sub>2</sub> (kPa)	0.768	0.442 to 1.337	0.351
BAL differential cell counts			
Macrophages (%)	1.010	0.991 to 1.030	0.312
Neutrophils (%)	1.002	0.982 to 1.022	0.865
Lymphocytes (%)	1.002	0.963 to 1.042	0.938
Eosinophils (%)	0.967	0.918 to 1.019	0.210
HRCT score			
HRCT ground glass score	0.860	0.637 to 1.161	0.324
DTPA clearance variables			
t <sub>0.5</sub> (min)	0.983	0.950 to 1.017	0.32
t <sub>0.5</sub> S (min)	1.009	0.987 to 1.030	0.44
fF (%)	1.009	0.992 to 1.027	0.30

FEV<sub>1</sub> = forced expiratory volume in 1 second; FVC = forced vital capacity; TLC = total lung capacity; TLCO = carbon monoxide transfer factor; Kco = carbon monoxide transfer coefficient; PaO<sub>2</sub> = arterial oxygen tension; Paco<sub>2</sub> = arterial carbon dioxide tension; Sao<sub>2</sub> = oxygen saturation; HRCT = high resolution CT; t<sub>0.5</sub>F = half time for the fast component of the bi-exponential DTPA clearance curve; t<sub>0.5</sub>S = half time for mono-exponential approximation to the early part of the DTPA clearance curve; t<sub>0.5</sub>S = half time for the fast component of the bi-exponential DTPA clearance curve; fF = fraction of tracer cleared by the fast component.

middle lobe and then recovered by gentle suction. The lavage was filtered through two layers of sterile gauze to remove mucus. Preparations of the cell suspensions were made in a cytocentrifuge (Cytospin 3; Shandon Scientific Ltd, Astmoor, UK) and cytospin slides of BAL cells were stained by the Papanicolaou method for cell differentiation. At least 200 cells were counted.

#### FOLLOW UP

The date of the DTPA study was established as the baseline from which survival was measured. Follow up concluded with the patient's death or last presentation. Survival was confirmed from the hospital notes and by contacting the patient's primary care physician.

#### STATISTICAL ANALYSIS

The statistical analyses were performed using the SPSS/PC (version 9.0, SPSS Inc, USA) software package. Values are expressed as means (SD) and a statistical significance level of 0.05 was used. Cox proportional hazards regression analysis was used throughout.

The characteristics of the patients who underwent open lung biopsy were compared with those who had not, using the Mann-Whitney U test. Kaplan-Meier survival curves were derived for patients in the two groups and comparison was made using the log rank test statistic.

Univariate Cox regression analysis was completed to identify significant variables predicting survival status. Variables which were significant by univariate Cox regression analysis were taken as potential predictors of survival and were used as covariates in the stepwise multivariate Cox regression analysis to identify independent predictors of survival. Those variables found to be independent predictors of survival by the multivariate analysis were used to perform stratified Cox regression survival function analysis. Each variable was further stratified into quartiles and the survival of the patients estimated. The quartile stratification was performed for age, % predicted TLC, % predicted TLCO, and t<sub>0.5</sub>F. The age quartiles included those patients aged <50 years, 50–59 years, 60–69 years, and >70 years; the % predicted TLCO quartiles were >55%, 45–54%, 35–44%, and <35%; the % predicted TLC quartiles were >90%, 75–89%, 60–75%, and <60%; and the t<sub>0.5</sub>F quartiles were >6.5 minutes, 5.5–6.4 minutes, 4.5–5.4 minutes, and <4.5 minutes. The results were summarised as hazard ratios which represent the relative risk of dying as a result of a specific characteristic during the entire period of observation.

The four measures of DTPA clearance were correlated against individual physiological, radiological, and BAL parameters by Pearson's correlation coefficient (two tailed).



Table 4 Correlations between DTPA variables and other parameters

	$t_{0.5}F$	$t_{0.5}S$	$fF$	$t_{0.5}$
Pulmonary function				
FVC (% predicted)	0.10	0.24†	0	0
TLC (% predicted)	0.10	0.22†	0	0
TLCO (% predicted)	0.14	0	0.24†	0.28*
KCO (% predicted)	0	0.14	0.14	0.24†
Blood gas analysis				
PaO <sub>2</sub>	0	0.10	0	0.10
SaO <sub>2</sub>	0.17	0.22†	0.32*	0.24†
HRCT scoring				
HRCT fibrosis score	0.22†	0.10	0	0
HRCT ground glass score	0.30†	0.10	0.22	0.20
BAL differential cell counts				
Neutrophils (%)	0.1	0.14	0	0
Lymphocytes (%)	0.14	0	0.3*	0
Eosinophils (%)	0	0	0	0.1

Values are expressed as Pearson's correlation coefficient (*r*). \**p*<0.01, †*p*<0.05. Abbreviations as in the footnote to table 3.

## Results

### PATIENT SELECTION

One hundred and thirty one patients were potential candidates for participation in the study (fig 2). Patients were secondarily excluded from the study if they had a subsequent tissue diagnosis other than UIP and/or responded to steroids (*n*=14) or underwent lung transplantation (*n*=11). A total of 106 patients therefore formed the study group (65 men, mean (SD) age 61 (11) years). The diagnosis of UIP pattern IPF was established by surgical (open or thoracoscopic) lung biopsy in 32 patients (30%). Seven patients (7%) had a diagnosis based on a transbronchial biopsy and HRCT scan. For six patients (6%) the diagnosis based on HRCT scanning was verified at necropsy. In 61 patients (57%) the diagnosis of UIP was based on the HRCT scan alone.

Thirty seven of the patients had never smoked while the remaining 69 had ceased smoking at least 6 months before entry into the study. No patient was lost to follow up. The median duration of follow up was 15 months. Thirty seven patients (35%) died of progressive lung disease during the follow up period (32 from respiratory failure, three from infection, and two from lung cancer). The median survival was 47 months.

Table 1 shows the characteristics of the patients including pulmonary function, BAL cell differential counts, and HRCT scores. Although HRCT scanning was performed for diagnostic purposes in all patients, the scan was available and suitable for fibrosis and ground glass scoring in 71 patients. DTPA scanning variables are shown in table 2.

### OPEN LUNG BIOPSIES

Patients who had an open lung biopsy were significantly younger than the other patients (mean 55.6 *v* 63.3 years, *p*<0.001) with better TLCO (4.47 *v* 3.76 mmol/kPa/min, *p*=0.044),

KCO (1.23 *v* 1.09 mmol/kPa/min/l, *p*=0.039), and PaO<sub>2</sub> (9.44 *v* 8.47 kPa, *p*=0.006); the difference in the Kaplan-Meier survival did not reach statistical significance (log rank *p*=0.24).

### FACTORS ASSOCIATED WITH SURVIVAL BY UNIVARIATE COX REGRESSION ANALYSIS

Age, FEV<sub>1</sub>, FVC, TLC, TLCO, PaO<sub>2</sub>, oxygen saturation, HRCT fibrosis score,  $t_{0.5}F$ , % predicted TLC, and % predicted TLCO were statistically significant predictors of survival (table 3).

### BIVARIATE CORRELATIONS BETWEEN DTPA VARIABLES AND OTHER PARAMETERS

Although several correlations between the four DTPA variables and various measures of pulmonary function, blood gas analysis, HRCT scores, and BAL fluid differential cell counts reached statistical significance (*p*<0.05), the degree of correlation assessed by the *r* value was nowhere more than weak. Those correlations which reached significant *p* values are shown in table 4.

### STEPWISE MULTIVARIATE COX REGRESSION ANALYSIS

By multivariate stepwise regression analysis, age (*p*=0.003), % predicted TLC (*p*=0.02), % predicted TLCO (*p*=0.003), and  $t_{0.5}F$  (*p*=0.03) were found to be independent predictors of survival (table 5). The inclusion of other DTPA scanning parameters, pulmonary function, HRCT scores, and BAL fluid differential cell counts did not improve the Cox regression model.

Multivariate Cox regression analysis yielded the hazard ratios shown in table 5. The hazard of death increases by 6% (95% CI 2 to 10) for every year of patient age, by 2% (95% CI 1 to 4) for every 1% decrease in % predicted TLC, by 4% (95% CI 1 to 6) for every 1% decrease in % predicted TLCO, and by 25% (95% CI 4 to 42) for every 1 minute decrease in  $t_{0.5}F$  (table 5). The effect of these variables on survival is plotted by quartiles in fig 3.

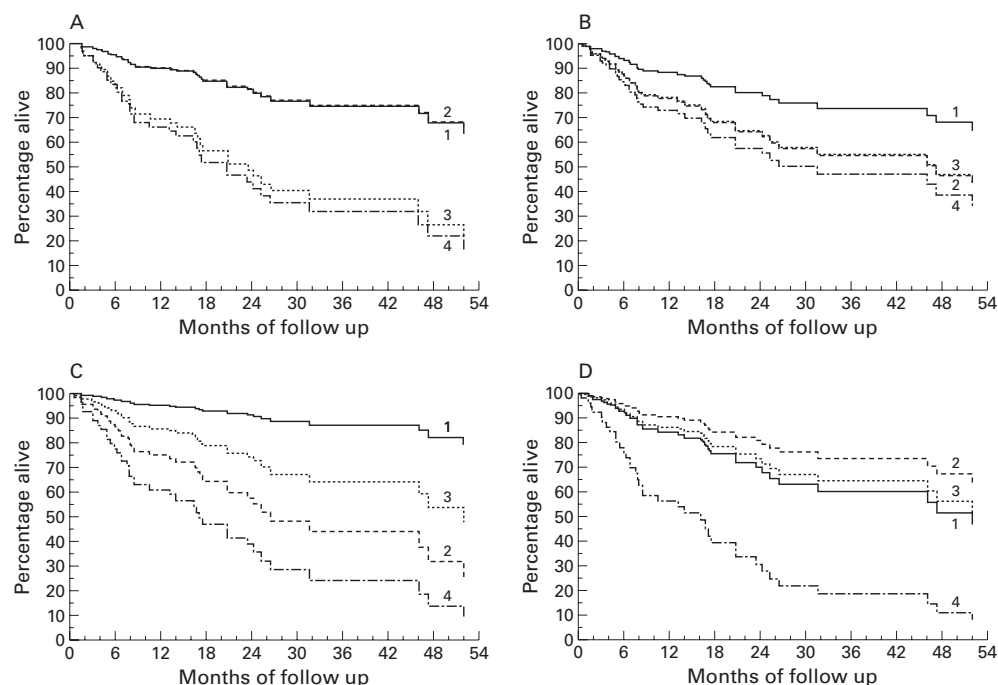
## Discussion

This study was conducted to assess the ability of DTPA scanning to predict survival in patients with UIP pattern IPF. The data

Table 5 Effect of independent predictors on survival determined by multiple stepwise regression analysis

Predictor	Hazard ratio	95% CI	<i>p</i> value
Age	1.062	1.021 to 1.104	0.003
TLC (% predicted)	0.976	0.956 to 0.995	0.02
TLCO (% predicted)	0.960	0.935 to 0.986	0.003
$t_{0.5}F$	0.747	0.578 to 0.964	0.03

TLC = total lung capacity; TLCO = carbon monoxide transfer factor;  $t_{0.5}F$  = half time for fast component of bi-exponential DTPA clearance curve.



**Figure 3** Survival analysis grouped by (A) TLCO percentage predicted quartiles, (B)  $t_{0.5}F$  quartiles, (C) age quartiles, and (D) TLC percentage predicted quartiles. (A) 1 = patients with TLCO >55% predicted ( $n=30$ ), 2 = TLCO 45–54.9% predicted ( $n=23$ ), 3 = TLCO 35–44.9% predicted ( $n=29$ ), 4 = TLCO <35% predicted ( $n=22$ ). (B) 1 = patients with  $t_{0.5}F$  >6.5 minutes ( $n=26$ ), 2 =  $t_{0.5}F$  5.5–6.4 minutes ( $n=22$ ), 3 =  $t_{0.5}F$  4.5–5.4 minutes ( $n=30$ ), 4 =  $t_{0.5}F$  <4.5 minutes ( $n=25$ ). (C) 1 = patients <50 years ( $n=15$ ), 2 = age 50–59 years ( $n=34$ ), 3 = age 60–69 years ( $n=36$ ), 4 = age >70 years ( $n=21$ ). (D) 1 = patients with TLC >90% predicted ( $n=26$ ), 2 = TLC 75–89.9% predicted ( $n=23$ ), 3 = TLC 60–74.9% predicted ( $n=24$ ), 4 = TLC <60% predicted ( $n=32$ ).

presented demonstrate that the  $t_{0.5}F$  component of DTPA clearance is a significant independent predictor for survival in the stepwise multiple regression analysis, augmenting the prognostic information given by age, % predicted TLC, and % predicted TLCO. The  $p$  values in table 5 indicate that age and % predicted TLCO are the most important predictors of survival, followed by % predicted TLC and  $t_{0.5}F$ . Improved prediction of survival may be particularly important in the context of referral for lung transplantation.

In this study only patients with a secure diagnosis of UIP were included. This demanded either an open lung biopsy or an HRCT scan in all cases, and 30% of patients were subject to histological confirmation of the diagnosis of UIP by open lung biopsy. This is higher than the standard practice in the UK where open lung biopsy rates of 8% are usual.<sup>22</sup> Inclusion only of patients with histological confirmation of disease may be ideal. However, such a strategy would result in a selection bias towards patients who are sufficiently well to undergo biopsy. Inclusion of those patients in whom the diagnosis has been secured by HRCT scanning should result in a more representative spectrum of cases. Several studies have shown that HRCT findings can predict histological patterns.<sup>17 19 23 24</sup> Furthermore, our mean fibrosis score of 2.0 closely mirrors that of Kazerooni *et al*<sup>19</sup> who found a strong correlation between the CT fibrosis score and the pathology fibrosis score.

In our study the median survival was 47 months. Published median survival figures vary from 2.9 years for a population based cohort

study to 5 years in the selected subgroups which reach tertiary referral centres.<sup>2</sup> Our population falls into the latter category.

In UIP pattern IPF non-invasive tests of high sensitivity and specificity are required by clinicians to distinguish cases which will show progressive disease from those which will behave in an indolent manner. Wells *et al*<sup>15</sup> were the first to report the potential role of DTPA scanning for predicting the clinical course of fibrosing alveolitis, although their study included a majority of patients with systemic sclerosis. Their study showed that normal clearance predicted stable lung function; survival was not analysed. In contrast, this study is restricted to UIP pattern IPF. In the present study the increased mono-exponential rate of  $^{99m}\text{Tc}$ -DTPA lung clearance—that is, reduced  $t_{0.5}$ —in the entire patient group is in keeping with previous reports for IPF.<sup>10 15</sup> However, our study differs from previous studies in that it focuses on the resolution of the DTPA clearance into fast and slow components, allowing the demonstration that the fast component is a prognostic indicator in UIP pattern IPF (table 3).

It has been shown that, with a median aerodynamic diameter of 0.8  $\mu\text{m}$  or less, deposition occurs primarily beyond the ciliated epithelium—that is, on the respiratory bronchioles and alveoli.<sup>26</sup> In healthy non-smokers pulmonary clearance of  $^{99m}\text{Tc}$ -DTPA follows a mono-exponential course with a half time of 60–70 minutes. In healthy smokers the clearance may be resolved mathematically into two exponential components.<sup>25</sup> This bi-exponential course has been demonstrated in several

groups including patients with ARDS, HIV infection, hyaline membrane disease, and patients without oedema after exposure to coal dust and crack cocaine.<sup>11</sup> Bi-exponential clearance is always abnormal.<sup>26</sup> The published half times of the bi-exponential components are typically of the order of 13 and 83 minutes, respectively. The physical basis of the bi-exponential clearance is uncertain, but it has been suggested that the fast clearance occurs in areas of damaged lung while the slow (normal) clearance occurs in areas of normal lung (fig 1).<sup>10</sup> We speculate that the rapid clearance may occur across the bare basement membrane, denuded of epithelium, which has been demonstrated in ultrastructural studies of IPF.<sup>27</sup> If this is the case, then the proportion of the clearance that occurs by the fast component ( $fF$ ) may be a measure of the proportion of the lung parenchyma which is diseased, and the rapidity of clearance by the fast component may be a measure of the severity of damage to the abnormal areas of the lung.

In previous <sup>99m</sup>Tc-DTPA scanning studies in patients with IPF the pulmonary clearance of aerosol has usually been analysed as a mono-exponential approximation to the clearance curve, as applied by Wells *et al.*<sup>15 28 29</sup> These studies have typically been based on the rate of clearance in the first 7–15 minutes and thus the half times were strongly influenced by the fast component of the clearance. These studies have been performed in relatively small groups of patients compared with our patient population.

Some central airway deposition of the aerosol was observed in a significant minority of patients despite the small size of the aerosol particles used. This effect is frequently seen in patients with poor lung function due to airflow obstruction or emphysema, bronchial asthma, chronic bronchitis, and other conditions, as well as technical difficulties and variations between nebulisers. Additional analysis of the images from eight patients with marked central deposition was carried out using information from both whole lung and peripheral lung areas, but a paired *t* test showed no significant difference between the  $t_{0.5}F$  values calculated for the two areas. Similarly, in a further group of eight patients without central deposition there was no significant difference between  $t_{0.5}F$  values for the whole lung and peripheral lung areas.

Hence, whole lung information was used in all the analysis presented to minimise the effects of statistical noise in the curve processing. Mucociliary clearance from the central airways does not appear to play a significant role in the measurement of  $t_{0.5}F$  in this study group.

We found no correlation between aerosol clearance and pulmonary function parameters (table 4), in agreement with the findings of previous studies.<sup>28 30</sup> Similarly, only a weak correlation between DTPA clearance and % predicted TLC was found in patients with sarcoidosis and scleroderma.<sup>31 32</sup> The consistent absence of a correlation may be because the impairment of pulmonary function parameters

is a result of the maldistribution of ventilation and perfusion or loss of surface area, while the increased rate of DTPA clearance is caused by increased junctional permeability in the alveolar capillary membranes.

Theoretically, the major barrier to clearance of DTPA across the alveolar-capillary barrier is at the alveolar epithelium. In lung fibrosis it is likely that the greatest contribution to clearance within the first minutes will be from fragmented interepithelial junctions, as suggested in previous studies.<sup>10</sup> The lower values of  $t_{0.5}F$  observed in patients who die may therefore be attributable to changes in epithelial morphology and severe damage of the lung tissue accompanying more inflammatory cell accumulation as well as fibrosis and destruction.

In conclusion, in UIP pattern IPF a biphasic pattern of clearance of DTPA from the lungs is seen. A reduced half time for the rapid component of clearance is an independent predictor of reduced survival. This technique complements other prognostic indicators such as age, % predicted TLC and TLCO and gives additional information as to expected survival. Our preliminary conclusion is that this simple and readily available technique could usefully be incorporated into clinical practice.

The authors acknowledge the Greater Manchester Lung Fibrosis Consortium for contributing patients, and Mrs Julie Morris and Mr Stephen Francis for advice on the statistical analysis of the data.

Members of the Greater Manchester Pulmonary Fibrosis Consortium: Dr G Archer, Stepping Hill Hospital, Stockport; Dr T Baker, Maelor Hospital, Wrexham; Dr PV Barber, Wythenshawe Hospital, Manchester; Dr B Bradley, Bolton General Hospital, Bolton; Dr Burton, Royal Preston Hospital, Preston; Dr KB Carroll, Wythenshawe Hospital, Manchester; Dr M Chopra, Tameside Hospital, Manchester; Dr J Earis, Fazakerley Hospital, Liverpool; Dr M Finnegan, Bury General Hospital, Bury; Dr J Finnerty, Countess of Chester Hospital, Chester; Dr D Graham, Whiston Hospital, Merseyside; Dr S Hanley, North Manchester General Hospital, Manchester; Dr C Hardy, Manchester Royal Infirmary, Manchester; Dr AM Hilton, Wythenshawe Hospital, Manchester; Dr K Jones, Bolton General Hospital, Bolton; Dr I Keeping, County of Chester Hospital, Chester; Dr S Madi, Chorley Hospital, Chorley; Dr J Miles, North Manchester General Hospital, Manchester; Dr R O'Driscoll, Hope Hospital, Manchester; Dr C Payne, Tameside Hospital, Manchester; Professor CAC Pickering, Wythenshawe Hospital, Manchester; Dr AK Webb, Wythenshawe Hospital, Manchester; Dr J Williams, Halton General Hospital, Runcorn; Dr R Wolstenholme, Royal Albert and Edward Infirmary, Wigan; Professor AA Woodcock, Wythenshawe Hospital, Manchester.

- Coultas DB, Zumwalt RE, Black WC, *et al.* The epidemiology of interstitial lung disease. *Am J Respir Crit Care Med* 1994;150:967–72.
- Hubbard R, Johnston I, Britton J. Survival in patients with cryptogenic fibrosing alveolitis: a population based cohort study. *Chest* 1998;113:396–400.
- Katzenstein AA, Myers JL. State of the art: idiopathic pulmonary fibrosis. Clinical relevance of pathologic classification. *Am J Respir Crit Care Med* 1998;157:1301–15.
- Bjoraker JA, Ryu JH, Edwin MK, *et al.* Prognostic significance of histopathologic subsets in idiopathic pulmonary fibrosis. *Am J Respir Crit Care Med* 1998;157:199–203.
- Schwartz DA, Helmers RA, Galvin JR, *et al.* Determinants of survival in idiopathic pulmonary fibrosis. *Am J Respir Crit Care Med* 1994;149:450–54.
- Wells AU, Hansell DM, Rubens MB, *et al.* The predictive value of appearances on thin-section computed tomography in fibrosing alveolitis. *Am Rev Respir Dis* 1993;148:1076–82.
- Gay SE, Kazerooni EA, Toews GB, *et al.* Idiopathic pulmonary fibrosis: predicting response to therapy and survival. *Am J Respir Crit Care Med* 1998;157:1063–72.
- Erbes R, Schaberg T, Loddenkemper R. Lung function tests in patients with idiopathic pulmonary fibrosis: are they helpful for predicting outcome. *Chest* 1997;111:51–7.
- O'Brodovich H, Coates G. Pulmonary clearance of <sup>99m</sup>Tc-DTPA: a non invasive assessment of epithelial integrity. *Lung* 1987;166:1–16.
- Pantin CF, Valind SO, Sweatman M, *et al.* Measures of the inflammatory response in cryptogenic fibrosing alveolitis. *Am Rev Respir Dis* 1988;138:1234–41.

- 11 Susskind H. Technetium-99m-DTPA aerosol to measure alveolar-capillary membrane permeability. *J Nucl Med* 1994;**35**:207-9.
- 12 Jacobs MP, Baughman RP, Hughes J, et al. Radioaerosol clearance in patients with active pulmonary sarcoidosis. *Am Rev Respir Dis* 1985;**131**:687-9.
- 13 Harrison NK, Glanville AR, Strickland B, et al. Pulmonary involvement in systemic sclerosis: the detection of early changes by thin section CT scan, bronchoalveolar lavage and <sup>99m</sup>Tc-DTPA clearance. *Respir Med* 1989;**83**:403-14.
- 14 Bourke SJ, Banham SW, McKillop JH, et al. Clearance of <sup>99m</sup>Tc-DTPA in pigeon fancier's hypersensitivity pneumonitis. *Am Rev Respir Dis* 1990;**142**:1168-71.
- 15 Wells AU, Hansell DM, Harrison NK, et al. Clearance of inhaled <sup>99m</sup>Tc-DTPA predicts the clinical course of fibrosing alveolitis. *Eur Respir J* 1993;**6**:797-802.
- 16 Yeh SH, Liu RS, Wu LC, et al. <sup>99m</sup>Tc<sup>m</sup>-HMPAO and <sup>99m</sup>Tc<sup>m</sup>-DTPA radioaerosol clearance measurements in idiopathic pulmonary fibrosis. *Nucl Med Commun* 1995;**16**:140-4.
- 17 Nishimura K, Kitaichi M, Izumi T, et al. Usual interstitial pneumonia: histologic correlation with high resolution CT. *Radiology* 1992;**182**:337-42.
- 18 Collins CD, Wells AU, Hansell DM, et al. Observer variation in pattern and extent of disease in fibrosing alveolitis on thin section computed tomography. *Clin Radiol* 1994;**49**:236-40.
- 19 Kazerooni EA, Martinez FJ, Flint A, et al. Thin-section CT obtained at 10-mm increments versus limited three-level thin-section CT for idiopathic pulmonary fibrosis. *AJR* 1997;**169**:977-83.
- 20 Quanjer PH, Tammeling GJ, Cotes JE, et al. Lung volumes and forced ventilatory flows. *Eur Respir J Suppl* 1993;**16**:5-40.
- 21 Gabbay E, Tarala R, Will R, et al. Interstitial lung disease in recent onset rheumatoid arthritis. *Am J Respir Crit Care Med* 1997;**156**:528-35.
- 22 Johnston ID, Gomm SA, Kalra S, et al. The management of cryptogenic fibrosing alveolitis in three regions of the United Kingdom. *Eur Respir J* 1993;**6**:891-3.
- 23 Müller NL, Stables CA, Miller RR, et al. Disease activity in idiopathic pulmonary fibrosis: CT and pathologic correlation. *Radiology* 1987;**165**:731-4.
- 24 Müller NL, Miller RR, Webb WR, et al. Fibrosing alveolitis: CT-pathologic correlation. *Radiology* 1986;**160**:585-8.
- 25 Wollmer P, Evander E. Biphasic pulmonary clearance of <sup>99m</sup>Tc-DTPA in smokers. *Clin Physiol* 1994;**14**:547-59.
- 26 Coates G, O'Brodovich H, Dolovich M. Lung clearance of <sup>99m</sup>Tc-DTPA in patients with acute lung injury and pulmonary edema. *J Thorac Imag* 1988;**3**:21-7.
- 27 Corrin B, Dewar A. Pathogenesis of idiopathic interstitial pulmonary fibrosis. *Ultrastruct Pathol* 1996;**20**:369-71.
- 28 Wang SJ, Kao CH. The alveolar permeability in patients with diffuse infiltrative lung disease detected by Tc-99m DTPA radioaerosol inhalation lung scintigraphy and the relationships with the pulmonary function test. *Chin Med J* 1995;**56**:264-9.
- 29 Uh S, Lee SM, Kim HT, et al. The clearance rate of alveolar epithelium using <sup>99m</sup>Tc<sup>m</sup>-DTPA in patients with diffuse infiltrative lung diseases. *Chest* 1994;**106**:161-5.
- 30 Anazawa Y, Isawa T, Teshima T, et al. Pulmonary epithelial permeability in normal subjects and patients with idiopathic interstitial pneumonia. *Nihon Kyobu Shikkan Gakkai Zasshi* 1991;**29**:1439-43.
- 31 Nakano A, Yamaguchi E, Naitoh S, et al. Assessment of alveolar epithelial permeability in progressive systemic sclerosis (PSS) using <sup>99m</sup>Tc-DTPA (diethylene triamine penta acetate) aerosol inhalation. *Nihon Kyobu Shikkan Gakkai Zasshi* 1992;**30**:45-50.
- 32 Dusser DJ, Collignon MA, Stanislas-Leguern G, et al. Respiratory clearance of <sup>99m</sup>Tc-DTPA and pulmonary involvement in sarcoidosis. *Am Rev Respir Dis* 1986;**134**:493-7.