

Epithelial–mesenchymal transition in lung development and disease: does it exist and is it important?

Domokos Bartis,¹ Nikica Mise,² Rahul Y Mahida,¹ Oliver Eickelberg,² David R Thickett¹

► Additional material is published online only. To view please visit the journal online (<http://dx.doi.org/10.1136/thoraxjnl-2013-204608>).

¹Department of Clinical Respiratory Sciences, Centre for Translational Inflammation and Fibrosis Research, School of Clinical and Experimental Medicine, University of Birmingham, Birmingham, UK
²Comprehensive Pneumology Center, University Hospital, Ludwig-Maximilians University and Helmholtz Zentrum, München, Germany

Correspondence to

Dr Domokos Bartis, Department of Clinical Respiratory Sciences, Centre for Translational Inflammation and Fibrosis Research, University of Birmingham Research Laboratories, Queen Elizabeth Hospital, Mindelsohn Way, Birmingham B15 2WB, UK; d.bartis@outlook.com

Received 3 October 2013
Revised 12 November 2013
Accepted 20 November 2013
Published Online First
12 December 2013



► <http://dx.doi.org/10.1136/thoraxjnl-2014-205582>
► <http://dx.doi.org/10.1136/thoraxjnl-2014-205647>



CrossMark

To cite: Bartis D, Mise N, Mahida RY, et al. *Thorax* 2014;**69**:760–765.

ABSTRACT

Epithelial–mesenchymal transition (EMT) is a process when epithelial cells gradually transform into mesenchymal-like cells losing their epithelial functionality and characteristics. EMT is thought to be involved in the pathogenesis of numerous lung diseases ranging from developmental disorders, fibrotic tissue remodelling to lung cancer. The most important question—namely what is the importance and contribution of EMT in the pathogenesis of several chronic lung conditions (asthma, COPD, bronchiolitis obliterans syndrome and lung fibrosis)—is currently intensely debated. This review gives a brief insight into the mechanism and assessment methods of EMT in various pulmonary diseases and summarises the recent literature highlighting the controversial experimental data and conclusions.

WHAT IS EPITHELIAL–MESENCHYMAL TRANSITION?

Epithelial–mesenchymal transition (EMT) is a process in which epithelial cells gradually acquire a mesenchymal (fibroblast-like) cell phenotype. EMT has been shown to be essential for embryonic development, gastrulation, and the development of the neural crest, heart and other organs. EMT is also implicated in tissue repair, organ fibrosis and cancer progression. EMT is associated with the progression of many type of tumours and is involved in their metastasis and treatment resistance.^{1 2}

CELLULAR CHANGES IN EMT

During EMT, epithelial cells undergo profound changes which can be categorised into four broad cellular functions: changes in transcriptional regulation; changes in cytoskeleton and motility; changes in cell adhesion; and changes in the synthesis of extracellular matrix (ECM) components.

Several transcription factors such as Snail, Slug, ZEB-1, ZEB-2, Twist, β -catenin and Tcf/LEF have been identified as key regulators of EMT, and are the ‘master switches’ important for cell reprogramming (figure 1).^{2–5}

Cytokeratins are the characteristic intermediate filaments in epithelial cells. During EMT cells are reprogrammed to express vimentin instead.^{2 5} Other cytoskeletal changes involve de novo expression of fibroblast specific protein (FSP)-1 (also called S100A4) in the epithelium, which has been associated with increased migratory capacity, a more invasive phenotype in tumours and also worse prognosis in lung cancer.⁶ α -Smooth muscle actin (α -SMA) is also a frequently assessed marker

in EMT. Expression of α -SMA is characteristic for myofibroblasts which are laying down an excessive amount of ECM and thus are responsible for tissue remodelling and fibrosis (figure 1).⁷

Early molecular signs of EMT involve the dissociation of cell–cell junctions induced by downregulation and/or disassembly of junctional components, such as occludins, ZO-1, claudins and E-cadherin.^{2 5} The gradual loss of E-cadherin—considered a hallmark of EMT—is accompanied by the simultaneous gain of N-cadherin, a mesenchymal marker. This change is commonly termed the ‘cadherin switch’ (figure 1).⁵

Cells undergoing EMT also begin to synthesise ECM components like fibronectin and collagen type 1.^{8 9}

ASSESSMENT OF EMT IN LUNG TISSUE

EMT is thought to be a gradual process, meaning that there are intermediate cellular phenotypes during the transition. An epithelial cell undergoing EMT will express a set of different marker genes during this process. Since changes in gene expression have also been detected during injury, activation or dedifferentiation of epithelial cells, it is obviously rather challenging to identify with certainty epithelial cells undergoing EMT in complex pathological conditions.

It is well established that during the physiological repair process following epithelial injury, loosening of epithelial–epithelial cell contacts (eg, tight junctions and adherent junctions), alteration of cell–ECM contacts, and cytoskeletal activation (migration) and morphological changes (spreading) occur during wound repair.¹⁰ These phenotypic changes are thought to be mediated by EMT transcription factors.¹¹ However, we have to emphasise that during physiological wound repair mesenchymal markers expressed by epithelial cells do not necessarily mean transdifferentiation to fibroblasts or myofibroblasts. Although acquiring mesenchymal features and molecular markers, migrating epithelial cells in wound repair do not downregulate E-cadherin and tight junction proteins; there is rather an intercellular redistribution of these proteins.^{11–13}

There are numerous articles demonstrating that epithelial cells coexpress mesenchymal and epithelial markers in various lung diseases in humans.^{14–20} Other methods commonly used to identify EMT are to show the activation of signalling pathways and transcription factors thought to regulate EMT. These mechanisms—for example, the activation of transcription factors of the *Snail* family and the

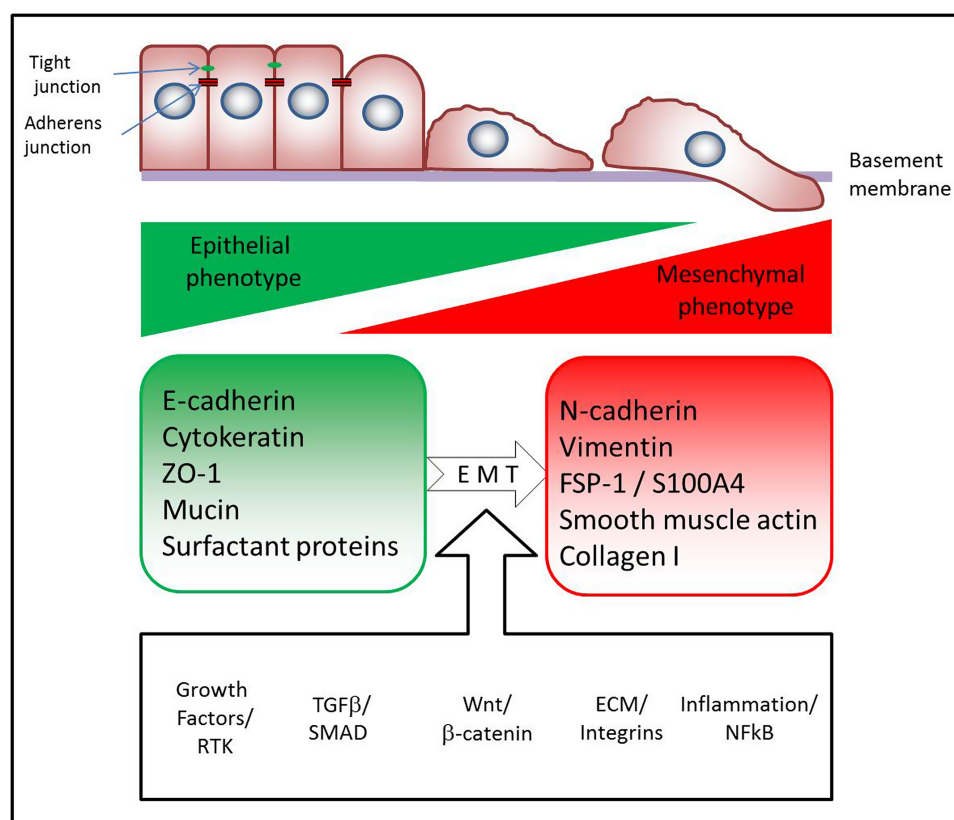


Figure 1 The most important features of epithelial–mesenchymal transition (EMT). Multiple pathways have been found to trigger EMT: tyrosine kinase receptors (epidermal growth factor, fibroblast growth factor, connective tissue growth factor, platelet-derived growth factor, insulin-like growth factor, etc), integrins, Wnt, nuclear factor (NF)- κ B and transforming growth factor β (TGF- β) pathways. A common feature of these pathways is that they activate ‘master transcription factors’ (Snail, Slug, Zeb-1, Twist, etc) which switch on the EMT programme in epithelial cells, namely, downregulating E-cadherin expression and other genes linked to the epithelial phenotype and activating the transcription of genes associated with the mesenchymal phenotype. Canonical TGF- β /SMAD signalling is perhaps the best characterised signalling pathway which contributes to fibrosis (for a recent review, see Fernandez *et al*⁹⁰). Activation of canonical Wnt signalling and β catenin makes epithelial cells susceptible to EMT caused by TGF- β , by inhibiting the growth arrest which is induced by TGF- β . The extracellular matrix (ECM) also modulates TGF- β signalling through integrin signalling contributing to EMT. Inflammatory cytokines activating NF- κ B are thought to further accentuate fibrosis and EMT in the lung.

consequent downregulation of E-cadherin—show striking similarities between fibrosis, developmental programmes involving EMT and carcinogenesis, suggesting a common molecular regulatory background is present.^{21–23} However, these experimental methods only provide a ‘snapshot’ of a process stretched over a period of time and thus are criticised for not being suitable to follow a dynamic process like EMT. To solve this ongoing controversy there is a need for methods which are able to track the transdifferentiation process more reliably, like intravital microscopy or cell fate mapping.

Currently there are no publications available describing the use of intravital microscopy to evaluate EMT of lung epithelial cells in real time. Faulkner *et al*²⁴ found that kidney interstitial fibroblasts do not derive from tubular epithelial cells in renal fibrosis and it was described that activation of intrinsic transforming growth factor β (TGF- β) signalling is essential in blood-borne metastasis formation in breast cancer cells using in vivo imaging techniques.²⁵

However, the most important question remaining is whether EMT causally contributes to lung disease and, if yes, to what extent? Lung conditions with chronic inflammation and persistent injury result in scarring, fibrosis and tissue remodelling, leading to a decrease of lung function, respiratory failure and death. Recently, experiments using genetic cell fate tracking of lung epithelial cells were performed to address this issue in

mouse models of lung fibrosis^{9 26 27} and allergic asthma.²⁸ These studies found that approximately 30–50% of murine lung fibroblasts in lung fibrosis and allergic asthma were derived from epithelial cells which had undergone EMT as identified by genetic tagging. In these models, β galactosidase was used as a genetic label.^{9 26 27} Criticism of this method highlighted that the enzymatic reaction using X-gal and β galactosidase does not allow high-resolution confocal imaging contrary to fluorescent tags. Because of this, the borders between neighbouring cells are obscure and the possibility of false-positive identification of cells cannot be excluded.²⁹ Additionally, these lineage-tracking studies^{9 26 27} used transgenic mice in which the recombination was driven by a 3.7 kb fragment of the human surfactant protein C (*Sftpc*) promoter,³⁰ which is somewhat different from the endogenous murine *Sftpc* promoter which drives the recombination in other animal models.²⁹ Also in vitro culture of alveolar epithelial cells (AECs) after isolation may result in experimental artefacts, which raises doubt as to whether EMT actually contributes to in vivo fibroblast formation.^{8 9 26}

Recently published data have challenged the idea that a significant fraction of myofibroblasts in the diseased lung derive from epithelial cells in animal models^{29 31} and humans.³² These contradictory results from different laboratories have resulted in an intensive debate on lung fibrosis, and kidney^{33 34} and liver fibrosis.³⁵ Rock *et al* used a transgenic mouse strain with a

fluorescent protein tag (Tomato) under the control of the endogenous *Sftpc* promoter. These experiments suggest that AECs do not transdifferentiate into myofibroblasts in large numbers in the bleomycin lung injury model.²⁹ A recently published study in mice using multiple genetic tags for cell fate tracking found that myofibroblasts in unilateral urethral obstruction (UUO) kidney fibrosis derive from proliferation of local precursors (50%), bone-marrow-derived fibrocytes (35%), endothelial-mesenchymal transition (10%) and EMT (5%).³⁴ The study of LeBleu *et al*³⁴ using the UUO model is a good example, highlighting the multiple origins of myofibroblasts. However, it is difficult to extrapolate from the UUO kidney fibrosis model to the lung as the organ function, the mechanism of parenchymal injury and consequent fibrotic changes are considerably different.

These controversial data illustrate the ongoing intensive scientific debate on the origin of myofibroblasts in fibrotic diseases and tissue remodelling. Elucidating this further is crucial to determine the direction of future research and identification of new therapeutic targets.

EMT IN LUNG DEVELOPMENT AND PAEDIATRIC DISEASES

The first EMT event described occurs in gastrulation—the earliest stage of embryonic development. During this process, the primary mesenchyme is formed, giving the first distinction between epithelial and mesenchymal phenotypes. The epithelial and mesenchymal cell phenotypes are not irreversible, and during embryonic development, cells can convert between the epithelial and mesenchymal states through the process of EMT or mesenchymal-to-epithelial transition (MET).^{36–37} Sometimes, several rounds of EMT and MET are required to give a rise to specialised cell types needed for organ formation. During development, EMT provides flexibility in cell fate; however, the development of specialised tissues during embryogenesis requires additional epithelial cell plasticity that slightly differs from classical EMT. Epithelial cell plasticity is essential throughout the process of branching morphogenesis in numerous organs, including the lung.^{38–39} Lung-branching morphogenesis requires reciprocal signalling between the epithelium and surrounding mesenchyme that is mediated by coordinated activity of TGF- β /bone morphogenetic protein, Wnt, Sonic hedgehog, fibroblast growth factor (FGF) or retinoic acid signalling.⁴⁰ Dysregulation of these signalling pathways is implicated in aberrant lung branching, alveologenesis and pulmonary vascular development, events critical for normal lung development. In addition to genetic factors, pre-natal and post-natal environmental exposures, including epigenetics, play a significant role in programming lung morphogenesis and development of paediatric lung disease.

Bronchopulmonary dysplasia (BPD) is a chronic lung disease that occurs in very premature infants and is characterised by impaired alveologenesis and vascular development. BPD develops as a result of injury or infection on a very immature lung. Interstitial fibrosis is recognised as a prominent feature of BPD as a consequence of repetitive lung injury. Deng and coworkers,⁴¹ using transgenic reporter mice, showed that lung fibroblasts in BPD could arise from bone-marrow-derived ATII cells that have undergone EMT. Nosedá and colleagues^{42–43} revealed that expression of Notch1 or Notch4 in endothelial cells can cause transition to a mesenchymal phenotype via endothelial-to-mesenchymal transition, a process very similar to EMT. Constitutive Notch1 activation, together with inhibitor studies in lung organ cultures, identified a role for Notch signalling together with TGF- β in mesothelial EMT.⁴⁴ Que *et al*⁴⁵

have also shown that mesothelial cells covering the lung surface can migrate into the organ itself and give rise to various cell types, including mesenchymal cells, within the developing lung.

Taken together, these findings have important implications for our understanding of lung developmental defects; however, the casual impact of EMT to BPD has yet to be determined.

EMT IN ASTHMA

Airway remodelling comprises thickening of the basement membrane accompanied by sub-epithelial fibrosis, epithelial shedding and smooth muscle hypertrophy/hyperplasia.¹⁷ Under normal conditions, the damaged epithelium is able to repair itself quickly. However, constant damage inflicted by chronic inflammation in asthma results in a greatly reduced number of ciliated cells, leaving the basal membrane surface only partially covered with basal cells which are more resistant to apoptosis.¹⁷ Loss of E-cadherin as a hallmark of EMT in airway epithelial cells of patients with asthma is also described.^{14–46–47} Fibroblasts and myofibroblasts are responsible for the increased production of ECM proteins, for example, collagen and proteoglycans, and also serve as storage for cytokines and growth factors like TGF- β , which play important roles in fibrosis and the regulation of fibroblast–myofibroblast differentiation in inflamed airways.^{48–49}

Recent experimental data indicate that T helper 2 dominant chronic inflammation leads to elevated TGF- β 1 levels in airways via increased production of TGF- β by eosinophils and macrophages, in addition to fibroblasts, endothelial and smooth muscle cells. TGF- β is stored in the ECM and in turn induces EMT and sub-epithelial fibrosis.²⁸

Concerning the pathogenesis of asthma, does EMT contribute to tissue remodelling and sub-epithelial fibrosis? Johnson and colleagues²⁸ found evidence for this phenomenon in a house dust mite (HDM) allergen sensitised transgenic murine model. They demonstrated that β -galactosidase-tagged large airway epithelial cells gradually lose epithelial characteristics, gain expression of mesenchymal markers, for example, vimentin, and migrate into the sub-epithelial compartment.²⁸ In vivo cell-fate tracking of genetically labelled epithelial cells provides evidence for epithelial cell transdifferentiation in this mouse model of chronic asthma. Other studies use primary human bronchial epithelial cell (hBEC) cultures to study the role of allergen sensitisation in EMT. HDM sensitisation of the airways synergises with TGF- β 1 and results in the loss of E-cadherin expression,⁴⁷ caveolin-1 internalisation and consequent loss of epithelial barrier function.⁴⁶ Hackett *et al*¹⁴ investigated EMT using air-liquid interface cultures of hBECs isolated from patients with asthma and non-asthmatic controls. The authors found that basal cells of the stratified airway epithelium are the most susceptible to TGF- β 1-induced EMT. Interestingly, they found no histological evidence for expression of mesenchymal markers in the bronchial epithelium of matched patients with asthma, rather an increased number of cytokeratin-5+ (KRT5+) positive cells, indicating a differentiation shift towards the basal epithelial cell phenotype.¹⁴ The results discussed above highlight the controversy and discrepancy between research data concerning EMT.

EMT IN BRONCHIOLITIS OBLITERANS SYNDROME

Bronchiolitis obliterans syndrome (BOS) is a major cause of allograft dysfunction in lung transplant recipients. Hodge *et al*¹⁵ found increased expression of mesenchymal proteins by large airway bronchial epithelial cells (BECs) in patients with BOS after lung transplantation to be a clear indicator of the presence

of EMT. Ward *et al*⁵⁰ found that S100A4 and matrix metalloproteinase (MMP)-2, MMP-7 and MMP-9 expression was present in the airway epithelium of patients who were stable following lung transplant without signs of BOS. Invasive capacity of BECs isolated from these patients was also shown. It is known that allograft infections pose a risk for BOS and has been shown to promote EMT in patient-derived small airway epithelial cells.⁵¹ Inadequate graft microvasculature and consequent graft ischaemia has emerged as a promoting factor for EMT in transplanted lungs.^{52–53} Intriguingly, an *in vitro* study suggests that commonly used immunosuppressive agents may promote EMT in BECs.⁵⁴

EMT IN COPD

COPD is accompanied by inflammation and tissue remodelling,⁵⁵ and has been known to be strongly associated with lung cancer. A recent study found a robust genomic link between COPD, lung cancer and Hedgehog signalling, which is also implicated in tobacco-smoke-induced EMT.⁵⁶ Tissue remodelling in COPD is characterised by emphysema, and small airway remodelling with peribronchiolar fibrosis. Recent investigations reported that nicotine and tobacco smoke induce EMT in BECs in a Wnt3a/ β -catenin/TGF- β -dependent manner.⁵⁷ Wang *et al*⁵⁸ described that urokinase plasminogen activator receptor is over-expressed in the airway epithelium of patients with COPD and is involved in mediating the effects of tobacco smoke on EMT in BECs. Studies in mice chronically exposed to tobacco smoke showed increased levels of TGF- β 1, connective tissue growth factor (CTGF) and platelet-derived growth factor (PDGF)-B in the treatment group.⁵⁹ All these growth factors are known to induce EMT.^{2–60–61} Recent clinical investigations in patients with COPD^{18–20} showed that cells costaining for epithelial and mesenchymal markers are present in the large airways of asymptomatic smokers and in especially large numbers in current smokers. The authors showed that the reticular basement membrane (Rbm) in people who smoke and those with COPD is highly fragmented, with elongated spaces or cracks termed 'clefts', which is a hallmark of EMT in the airways.^{62–63} These clefts in the Rbm usually contained cells positive for mesenchymal markers S100A4, vimentin and MMP-9.²⁰ Recent findings indicate that similar changes can also be observed in the small (<1 mm) airways of smokers.⁶⁴

EMT IN IDIOPATHIC PULMONARY FIBROSIS

The histological finding characteristic for idiopathic pulmonary fibrosis (IPF) is usual interstitial pneumonia (UIP) with scattered α -SMA-positive fibroblastic foci (FF) in collagen-rich areas, alternating with normal lung areas. The most often used animal model for IPF is the single-dose bleomycin challenge, although it is known that several features of IPF—most importantly being a progressive and chronic disease—are poorly represented. Also, many drugs including corticosteroids proved to be effective in the bleomycin model but are ineffective in IPF.⁶⁵ A recently published study suggests that a repetitive bleomycin injury model recapitulates several features of human IPF better than the conventional single-dose model. In this model the authors found that about 50% of S100A4+ fibroblasts are epithelial derived using genetic fate tracking.²⁷ On the contrary, Rock *et al*²⁹ found that epithelial cells do not contribute to fibroblast formation in the single-dose model.

Human immunohistochemistry studies on the role of EMT in the formation of myofibroblasts in IPF are controversial.⁶⁶ Harada *et al*⁶⁷ found myofibroblast cells in FF expressing epithelial markers TTF-1, cytokeratin and surfactant protein B.

Chilosi *et al*⁶⁸ identified migratory markers laminin5- γ 2, heat shock protein 27 and fascin expression in epithelial cells clustering above FF in UIP samples with special 'sandwich morphology'. On the contrary, Yamada *et al*³² did not find histological evidence for EMT in tissue samples from patients diagnosed with IPF (n=15) and non-specific interstitial pneumonia (n=12) using dual immunohistochemistry. In conclusion, the evidence that EMT is involved in the formation of activated myofibroblasts in pulmonary fibrosis remains controversial.

EMT IN LUNG CANCER

EMT is thought to contribute to cancer invasion and metastasis by allowing malignantly transformed epithelial cells to migrate, invade the surrounding stroma, and spread through the blood and lymphatic system to distant sites. Through the process of EMT, cancer cells not only lose their cell–cell adhesions and exhibit elevated motility and invasion, but also gain increased resistance to apoptosis, chemotherapeutic drugs and even develop stem-cell like properties.⁶⁹ According to current views, EMT has prognostic significance in various cancers as it is highly correlated with invasive phenotype and metastasis-forming capacity. This so-called 'EMT phenotype' is a primary determinant of prognosis.⁷⁰ It has been shown in non-small-cell lung cancer that EMT phenotype is associated with epidermal growth factor receptor mutations and drug resistance,⁷¹ and also with formation of cancer stem cells.⁷⁰ In lung cancer, the circulating tumour cells (CTCs) expressing epithelial marker EpCAM are lower compared with other solid tumours.⁷² However, when CTC isolation is not based on epithelial markers, the CTC numbers are similar to those of other solid tumours and have strong prognostic value.⁷³ These data suggest that lung cancer CTCs have lost their epithelial characteristics having undergone EMT. A recent review suggests that anticancer and antimetastasis drugs frequently have side effects associated with defective wound healing, implicating that similar molecular pathways contribute to these processes.¹² However, despite the growing body of evidence, there is still no direct proof in humans that EMT actually happens as a dynamic process in tumour metastasis formation.

WHAT IS THE CLINICAL IMPORTANCE OF EMT?

Two disease groups need to be considered concerning the clinical importance of EMT in the lung: conditions with fibrosis and tissue remodelling, and malignant lung diseases.

It has been recently highlighted that various forms of lung fibrosis and tissue remodelling are present in all chronic respiratory diseases.⁷⁴ Current research data highlight that we have to be careful on judging how much EMT contributes to the actual fibrosis, scarring and tissue remodelling. Among the identified targets is the TGF- β pathway and other growth factors, like PDGF, CTGF, FGF and vascular endothelial growth factor, which are considered to trigger EMT and have a proven pathogenic role in fibrotic lung diseases.^{75–78} Most of these molecular targets have been tested in animal models^{77–79–80} but there has been no success so far in translating these findings to the clinic.⁸¹ Pirfenidone is the only licensed therapy for IPF⁸² but the mechanism of action is obscure and there are no *in vivo* data available of its effects on EMT.

As Wnt signalling pathways have been shown to be important in the pathogenesis in several lung diseases, such as fibrosis,³ asthma,⁸³ COPD⁸⁴ and lung cancer,⁸⁵ they could serve as another promising therapeutic target. Currently there are multiple therapeutic approaches targeting Wnt signalling in lung

diseases which might be applied in the clinic in the near future.^{86–88}

For a detailed recent review on the involvement of EMT in malignant transformation and cancer progression, see Craene and Berx.⁷⁰

For a concise summary of recent articles on EMT in lung diseases, please see the table in the online supplement.

SUMMARY AND CONCLUSIONS

In summary, we can say that the extent and significance of EMT in lung diseases is still controversial because of the following issues:

1. A large majority of studies on EMT in lung diseases use methods which take only a 'snapshot' of this dynamic process—for example, immunohistochemistry, western blotting or flow cytometry. Although there have been moves to standardise the molecular markers of EMT,^{5 33} there are doubts as to whether EMT can only be defined by the coexpression of certain epithelial and mesenchymal markers⁶⁶ since similar molecular changes occur in epithelial cells during wound repair.^{11 12}
2. In the case of fibrotic changes, genetic lineage tagging of cells in animal models is thought to be a reliable method; however, the results are contradictory in different animal models for lung fibrosis and other organ fibrosis models.³³ It seems that the results in transgenic mice differ with regards to the nature of the genetic tag, the method used for its detection and also the quality of the transgenic construct used for recombination.
3. A large proportion of the in vivo data on the connection between fibrosis and EMT have been obtained from the single-dose pulmonary bleomycin challenge model. This has received criticism and clearly there is a need for the development of a more reliable murine lung fibrosis model that accurately reflects human UIP.
4. A growing body of evidence supports that EMT has a pivotal role in malignant transformation, invasion and metastatic capacity, and in the formation of cancer stem cells. In lung carcinomas, CTCs seem to have shifted towards a more mesenchymal phenotype compared with other solid tumours, suggesting EMT. Hitherto, there is no convincing direct in vivo evidence of EMT in human tumours, although suggestions were made about the detection of EMT in tumours in situ.⁸⁹

In conclusion, much recent research has highlighted the potential of EMT to be involved in lung development and disease responses. The precise clinical importance of EMT outside of tumour biology remains to be determined, but the development of drugs that target growth factors known to promote EMT suggest that modulation of EMT processes in the clinical setting may soon be possible. Whether these are clinically effective remains to be seen.

Contributors DB, NM, RYM, OE and DRT wrote and edited the manuscript.

Funding DB is currently funded by the FP7 Marie Curie Intra-European Fellowship (FP7-PEOPLE-IEF 300371) and received funding from the European Respiratory Society Long Term Fellowship (ERS-LTRF 2011–131).

Competing interests None.

Provenance and peer review Not commissioned; externally peer reviewed.

REFERENCES

- 1 Xiao DK, He JX. Epithelial mesenchymal transition and lung cancer. *J Thorac Dis* 2010;2:154–9.
- 2 Kalluri R, Weinberg RA. The basics of epithelial–mesenchymal transition. *J Clin Invest* 2009;119:1420.
- 3 Königshoff M, Balsara N, Pfaff E-M, et al. Functional Wnt signaling is increased in idiopathic pulmonary fibrosis. *PLoS ONE* 2008;3:e2142.
- 4 Pongracz JE, Stockley RA. Wnt signalling in lung development and diseases. *Respir Res* 2006;7:15.
- 5 Zeisberg M, Neilson EG. Biomarkers for epithelial–mesenchymal transitions. *J Clin Invest* 2009;119:1429–37.
- 6 Kimura K, Endo Y, Yonemura Y, et al. Clinical significance of S100A4 and E-cadherin-related adhesion molecules in non-small cell lung cancer. *Int J Oncol* 2000;16:1125–31.
- 7 Günther A, Korfei M, Mahavadi P, et al. Unravelling the progressive pathophysiology of idiopathic pulmonary fibrosis. *Eur Respir Rev* 2012;21:152–60.
- 8 Kim KK, Wei Y, Szekeres C, et al. Epithelial cell $\alpha 3 \beta 1$ integrin links β -catenin and Smad signaling to promote myofibroblast formation and pulmonary fibrosis. *J Clin Invest* 2009;119:213–24.
- 9 Kim KK, Kugler MC, Wolters PJ, et al. Alveolar epithelial cell mesenchymal transition develops in vivo during pulmonary fibrosis and is regulated by the extracellular matrix. *Proc Natl Acad Sci USA* 2006;103:13180–5.
- 10 Vaughan A, Chapman HA. Regenerative activity of the lung after epithelial injury. *Biochim Biophys Acta* 2013;1832:922–30.
- 11 Savagner P, Kusewitt DF, Carver EA, et al. Developmental transcription factor slug is required for effective re-epithelialization by adult keratinocytes. *J Cell Physiol* 2005;202:858–66.
- 12 Leopold PL, Vincent J, Wang H. A comparison of epithelial-to-mesenchymal transition and re-epithelialization. *Semin Cancer Biol* 2012;22:471–83.
- 13 Brandner JM, Kief S, Grund C, et al. Organization and formation of the tight junction system in human epidermis and cultured keratinocytes. *Eur J Cell Biol* 2002;81:253–63.
- 14 Hackett T-L, Warner SM, Stefanowicz D, et al. Induction of epithelial–mesenchymal transition in primary airway epithelial cells from patients with asthma by transforming growth factor- $\beta 1$. *Am J Respir Crit Care Med* 2009;180:122–33.
- 15 Hodge S, Holmes M, Banerjee B, et al. Posttransplant bronchiolitis obliterans syndrome is associated with bronchial epithelial to mesenchymal transition. *Am J Transplant* 2009;9:727–33.
- 16 Borthwick LA, Parker SM, Brougham KA, et al. Epithelial to mesenchymal transition (EMT) and airway remodelling after human lung transplantation. *Thorax* 2009;64:770–7.
- 17 Holgate ST, Davies DE, Lackie PM, et al. Epithelial–mesenchymal interactions in the pathogenesis of asthma. *J Allergy Clin Immunol* 2000;105:193–204.
- 18 Sohal S, Reid D, Soltani A, et al. Evaluation of epithelial mesenchymal transition in patients with chronic obstructive pulmonary disease. *Respir Res* 2011;12:130.
- 19 El-Gamel A, Sim E, Hasleton P, et al. Transforming growth factor beta (TGF- β) and obliterative bronchiolitis following pulmonary transplantation. *J Heart Lung Transpl* 1999;18:828–37.
- 20 Sohal SS, Reid D, Soltani A, et al. Reticular basement membrane fragmentation and potential epithelial mesenchymal transition is exaggerated in the airways of smokers with chronic obstructive pulmonary disease. *Respirology* 2010;15:930–8.
- 21 Jayachandran A, Königshoff M, Yu H, et al. SNAIL transcription factors mediate epithelial–mesenchymal transition in lung fibrosis. *Thorax* 2009;64:1053–61.
- 22 Parent AE, Choi C, Caudy K, et al. The developmental transcription factor slug is widely expressed in tissues of adult mice. *J Histochem Cytochem* 2004;52:959–65.
- 23 Shih J-Y, Yang P-C. The EMT regulator slug and lung carcinogenesis. *Carcinogenesis* 2011;32:1299–304.
- 24 Faulkner JL, Szykalski LM, Springer F, et al. Origin of interstitial fibroblasts in an accelerated model of angiotensin II-induced renal fibrosis. *Am J Pathol* 2005;167:1193–205.
- 25 Giampieri S, Manning C, Hooper S, et al. Localized and reversible TGF[β] signalling switches breast cancer cells from cohesive to single cell motility. *Nat Cell Biol* 2009;11:1287–96.
- 26 Tanjore H, Xu XC, Polosukhin VV, et al. Contribution of epithelial-derived fibroblasts to bleomycin-induced lung fibrosis. *Am J Respir Crit Care Med* 2009;180:657–65.
- 27 Degryse AL, Tanjore H, Xu XC, et al. Repetitive intratracheal bleomycin models several features of idiopathic pulmonary fibrosis. *Am J Physiol Lung Cell Mol Physiol* 2010;299:L442–L52.
- 28 Johnson JR, Roos A, Berg T, et al. Chronic respiratory aeroallergen exposure in mice induces epithelial–mesenchymal transition in the large airways. *PLoS One* 2011;6:e16175.
- 29 Rock JR, Barkauskas CE, Cronic MJ, et al. Multiple stromal populations contribute to pulmonary fibrosis without evidence for epithelial to mesenchymal transition. *Proc Natl Acad Sci USA* 2011;108:E1475–E83.
- 30 Perl A-K, Tichelaar J, Whitsett J. Conditional gene expression in the respiratory epithelium of the mouse. *Transgenic Res* 2002;11:21–9.
- 31 Hoyles RK, Derrett-Smith EC, Khan K, et al. An essential role for resident fibroblasts in experimental lung fibrosis is defined by lineage-specific deletion of high-affinity type II transforming growth factor β receptor. *Am J Respir Crit Care Med* 2011;183:249–61.

- 32 Yamada M, Kuwano K, Maeyama T, *et al.* Dual-immunohistochemistry provides little evidence for epithelial–mesenchymal transition in pulmonary fibrosis. *Histochem Cell Biol* 2008;129:453–62.
- 33 Quaggin SE, Kapus A. Scar wars: mapping the fate of epithelial–mesenchymal–myofibroblast transition. *Kidney Int* 2011;80:41–50.
- 34 LeBleu VS, Tadori G, O'Connell J, *et al.* Origin and function of myofibroblasts in kidney fibrosis. *Nat Med* 2013;19:1047–53.
- 35 Iwaisako K, Brenner DA, Kisseleva T. What's new in liver fibrosis? The origin of myofibroblasts in liver fibrosis. *J Gastroenterol Hepatol* 2012;27:65–8.
- 36 Thiery JP, Acloque H, Huang RYJ, *et al.* Epithelial–mesenchymal transitions in development and disease. *Cell* 2009;139:871–90.
- 37 Solnica-Krezel L. Conserved patterns of cell movements during vertebrate gastrulation. *Curr Biol* 2005;15:R213–R28.
- 38 Rorth P. Collective cell migration. *Annu Rev Cell Dev Biol* 2009;25:407–29.
- 39 Andrew DJ, Ewald AJ. Morphogenesis of epithelial tubes: insights into tube formation, elongation, and elaboration. *Dev Biol* 2010;341:34–55.
- 40 Morrissey EE, Hogan BL. Preparing for the first breath: genetic and cellular mechanisms in lung development. *Dev Cell* 2010;18:8–23.
- 41 Deng C, Wang J, Zou Y, *et al.* Characterization of fibroblasts recruited from bone marrow-derived precursor in neonatal bronchopulmonary dysplasia mice. *J Appl Physiol* 2011;111:285–94.
- 42 Nosedá M, Fu Y, Niessen K, *et al.* Smooth muscle alpha-actin is a direct target of Notch/CSL. *Circ Res* 2006;98:1468–70.
- 43 Nosedá M, McLean G, Niessen K, *et al.* Notch activation results in phenotypic and functional changes consistent with endothelial-to-mesenchymal transformation. *Circ Res* 2004;94:910–17.
- 44 Morimoto M, Liu Z, Cheng HT, *et al.* Canonical Notch signaling in the developing lung is required for determination of arterial smooth muscle cells and selection of Clara versus ciliated cell fate. *J Cell Sci* 2010;123(Pt 2):213–24.
- 45 Que J, Wilm B, Hasegawa H, *et al.* Mesothelium contributes to vascular smooth muscle and mesenchyme during lung development. *Proc Natl Acad Sci USA* 2008;105:16626–30.
- 46 Hackett T-L, de Bruin HG, Shaheen F, *et al.* Caveolin-1 controls airway epithelial barrier function. Implications for Asthma. *Am J Resp Cell Mol Biol* 2013;49:662–71.
- 47 Heijink IH, Postma DS, Noordhoek JA, *et al.* House dust mite–promoted epithelial-to-mesenchymal transition in human bronchial epithelium. *Am J Resp Cell Mol Biol* 2010;42:69–79.
- 48 Nihlberg K, Andersson-Sjöland A, Tuvesson E, *et al.* Altered matrix production in the distal airways of individuals with asthma. *Thorax* 2010;65:670–6.
- 49 Sheppard D. Transforming growth factor β : a central modulator of pulmonary and airway inflammation and fibrosis. *Proc Am Thorac Soc* 2006;3:413–17.
- 50 Ward C, Forrest IA, Murphy DM, *et al.* Phenotype of airway epithelial cells suggests epithelial to mesenchymal cell transition in clinically stable lung transplant recipients. *Thorax* 2005;60:865–71.
- 51 Borthwick LA, Sunny SS, Oliphant V, *et al.* *Pseudomonas aeruginosa* accentuates epithelial-to-mesenchymal transition in the airway. *Eur Respir J* 2011;37:1237–47.
- 52 Zhou G, Dada LA, Wu M, *et al.* Hypoxia-induced alveolar epithelial–mesenchymal transition requires mitochondrial ROS and hypoxia-inducible factor 1. *Am J Physiol Lung Cell Mol Physiol* 2009;297:L1120–L30.
- 53 Jiang X, Khan MA, Tian W, *et al.* Adenovirus-mediated HIF-1 α gene transfer promotes repair of mouse airway allograft microvasculature and attenuates chronic rejection. *J Clin Invest* 2011;121:2336–49.
- 54 Felton VM, Inge LJ, Willis BC, *et al.* Immunosuppression-induced bronchial epithelial–mesenchymal transition: A potential contributor to obliterative bronchiolitis. *J Thorac Cardiovasc Surg* 2011;141:523–30.
- 55 Hodgson DB, Saini G, Bolton CE, *et al.* Thorax in focus: chronic obstructive pulmonary disease. *Thorax* 2012;67:171–6.
- 56 Young RP, Whittington CF, Hopkins RJ, *et al.* Chromosome 4q31 locus in COPD is also associated with lung cancer. *Eur Respir J* 2010;36:1375–82.
- 57 Zou W, Zou Y, Zhao Z, *et al.* Nicotine-induced epithelial–mesenchymal transition via Wnt/ β -catenin signaling in human airway epithelial cells. *Am J Physiol Lung Cell Mol Physiol* 2013;304:L199–209.
- 58 Wang Q, Wang Y, Zhang Y, *et al.* The role of uPAR in epithelial–mesenchymal transition in small airway epithelium of patients with chronic obstructive pulmonary disease. *Respir Res* 2013;14:67.
- 59 Churg A, Tai H, Coulthard T, *et al.* Cigarette smoke drives small airway remodeling by induction of growth factors in the airway wall. *Am J Respir Crit Care Med* 2006;174:1327–34.
- 60 Yang L, Lin C, Liu Z-R. P68 RNA helicase mediates PDGF-induced epithelial mesenchymal transition by displacing Axin from β -catenin. *Cell* 2006;127:139–55.
- 61 Secker GA, Shortt AJ, Sampson E, *et al.* TGF β stimulated re-epithelialisation is regulated by CTGF and Ras/MEK/ERK signalling. *Exp Cell Res* 2008;314:131–42.
- 62 Kalluri R. EMT: when epithelial cells decide to become mesenchymal-like cells. *J Clin Invest* 2009;119:1417–9.
- 63 Acloque H, Adams MS, Fishwick K, *et al.* Epithelial–mesenchymal transitions: the importance of changing cell state in development and disease. *J Clin Invest* 2009;119:1438–49.
- 64 Milara J, Peiró T, Serrano A, *et al.* Epithelial to mesenchymal transition is increased in patients with COPD and induced by cigarette smoke. *Thorax* 2013;68:410–20.
- 65 Moeller A, Ask K, Warburton D, *et al.* The bleomycin animal model: a useful tool to investigate treatment options for idiopathic pulmonary fibrosis? *Int J Biochem Cell Biol* 2008;40:362–82.
- 66 Morbini P, Inghilleri S, Campo I, *et al.* Incomplete expression of epithelial–mesenchymal transition markers in idiopathic pulmonary fibrosis. *Pathol Res Pract* 2011;207:559–67.
- 67 Harada T, Nabeshima K, Hamasaki M, *et al.* Epithelial–mesenchymal transition in human lungs with usual interstitial pneumonia: quantitative immunohistochemistry. *Pathol Int* 2010;60:14–21.
- 68 Chilosi M, Zamo A, Doglioni C, *et al.* Migratory marker expression in fibroblast foci of idiopathic pulmonary fibrosis. *Respir Res* 2006;7:95.
- 69 Xiao D, He J. Epithelial mesenchymal transition and lung cancer. *J Thorac Dis* 2010;2:154.
- 70 Craene BD, Berx G. Regulatory networks defining EMT during cancer initiation and progression. *Nat Rev Cancer* 2013;13:97–110.
- 71 Byers LA, Diao L, Wang J, *et al.* An epithelial–mesenchymal transition gene signature predicts resistance to EGFR and PI3K inhibitors and identifies Axl as a therapeutic target for overcoming EGFR inhibitor resistance. *Clin Cancer Res* 2013;19:279–90.
- 72 Krebs MG, Sloane R, Priest L, *et al.* Evaluation and prognostic significance of circulating tumor cells in patients with non–small-cell lung cancer. *J Clin Oncol* 2011;29:1556–63.
- 73 Hofman V, Bonnetaud C, Ilie MI, *et al.* Preoperative circulating tumor cell detection using the isolation by size of epithelial tumor cell method for patients with lung cancer is a new prognostic biomarker. *Clin Cancer Res* 2011;17:827–35.
- 74 Chapman HA. Epithelial-mesenchymal interactions in pulmonary fibrosis. *Annu Rev Physiol* 2011;73:413–35.
- 75 Adamali HI, Maher TM. Current and novel drug therapies for idiopathic pulmonary fibrosis. *Drug Des Dev Ther* 2012;6:261.
- 76 Budd DC, Holmes AM. Targeting TGF β superfamily ligand accessory proteins as novel therapeutics for chronic lung disorders. *Pharm Ther* 2012;135:279–91.
- 77 Guntur VP, Reiner CR. The potential use of tyrosine kinase inhibitors in severe asthma. *Curr Opin Allergy Clin Immunol* 2012;12:68–75.
- 78 Akhmetshina A, Palumbo K, Dees C, *et al.* Activation of canonical Wnt signalling is required for TGF- β -mediated fibrosis. *Nat Commun* 2012;3:735.
- 79 Nakanishi H, Sugiura T, Streisand JB, *et al.* TGF- β -neutralizing antibodies improve pulmonary alveologenesis and vasculogenesis in the injured newborn lung. *Am J Physiol Lung Cell Mol Physiol* 2007;293:L151–L61.
- 80 McMillan SJ, Xanthou G, Lloyd CM. Manipulation of allergen-induced airway remodeling by treatment with anti-TGF- β antibody: effect on the Smad signaling pathway. *J Immunol* 2005;174:5774–80.
- 81 Denton CP, Merkel PA, Furst DE, *et al.* Recombinant human anti-transforming growth factor β 1 antibody therapy in systemic sclerosis: a multicenter, randomized, placebo-controlled phase I/II trial of CAT-192. *Arthritis Rheum* 2007;56:323–33.
- 82 Raghu G, Thickett DR. Pirfenidone for IPF: pro/con debate; the 'con' viewpoint. *Thorax* 2013;68:605–8.
- 83 Kumawat K, Menzen MH, Bos IST, *et al.* Noncanonical WNT-5A signaling regulates TGF- β -induced extracellular matrix production by airway smooth muscle cells. *FASEB J* 2013;27:1631–43.
- 84 Heijink IH, de Bruin HG, van den Berge M, *et al.* Role of aberrant WNT signalling in the airway epithelial response to cigarette smoke in chronic obstructive pulmonary disease. *Thorax* 2013;68:709–16.
- 85 Bartis D, Csongei V, Weich A, *et al.* Down-regulation of canonical and up-regulation of non-canonical Wnt signalling in the carcinogenic process of squamous cell lung. *PLoS ONE* 2013;8(3):e57393.
- 86 Kim TH, Kim S-H, Seo J-Y, *et al.* Blockade of the Wnt/ β -catenin pathway attenuates bleomycin-induced pulmonary fibrosis. *Tohoku J Exp Med* 2011;223:45–54.
- 87 Henderson WR, Chi EY, Ye X, *et al.* Inhibition of Wnt/ β -catenin/CREB binding protein (CBP) signaling reverses pulmonary fibrosis. *Proc Natl Acad Sci USA* 2010;107:14309–14.
- 88 Tennis M, Van Scoyk M, Heasley LE, *et al.* Prostacyclin inhibits non small cell lung cancer growth by a frizzled 9 dependent pathway that is blocked by secreted frizzled related protein 1. *Neoplasia* 2010;12:244–53.
- 89 Bastid J. EMT in carcinoma progression and dissemination: Facts, unanswered questions, and clinical considerations. *Cancer Metastasis Rev* 2012;31:277–83.
- 90 Fernandez IE, Eickelberg O. The impact of TGF- β on lung fibrosis: from targeting to biomarkers. *Proc Am Thorac Soc* 2012;9:111–16.