

The usefulness of competitive PCR: airway gene expression of IL-5, IL-4, IL-4 δ 2, IL-2, and IFN γ in asthma

E M Glare, M Divjak, M J Bailey, E H Walters

Abstract

Background—Asthma has been described as an eosinophilic bronchitis driven by interleukin(IL)-4 and IL-5. The quantification of cytokine mRNA levels in airway samples has been confounded by housekeeping gene expression which differs between and within asthmatics and controls.

Methods—The usefulness of competitive reverse transcriptase-polymerase chain reaction (RT-PCR) that is independent of housekeeping gene expression for quantitating the mRNA for interferon (IFN) γ , IL-2, IL-5, IL-4 and its receptor antagonist encoding splicing variant IL-4 δ 2 was determined in a cross sectional study of 45 normal control subjects and 111 with asthma.

Results—Atopic controls and atopic asthmatic subjects expressed more IL-5 than non-atopic controls ($p < 0.02$) in bronchoalveolar lavage (BAL) cells, but not in biopsy specimens. IL-5 mRNA expression in BAL cells from asthmatic subjects using inhaled corticosteroids (ICS) was significantly lower than those not receiving ICS ($p = 0.04$). IL-2 mRNA levels differed with steroid use in biopsy specimens but not in BAL cells. IFN γ , IL-4, and IL-4 δ 2 mRNA levels did not differ between any groups and were not affected by steroid use. IL-4 and IL-4 δ 2 mRNA levels were positively correlated ($p < 0.0001$), suggesting coordinated transcription.

Conclusions—While the signal differentiation of competitive PCR in asthma may rival that of in situ hybridisation and immunohistochemistry, the method is expensive and wasteful of material.

(Thorax 2001;56:541-548)

Keywords: asthma; competitive PCR; interleukins

Asthma is characterised pathologically by an infiltrate of activated T cells and eosinophils into the airways.^{1,2} Helper T (Th) cells can be broadly divided into two functional subsets based on their profile of cytokine production: type 1 T cells (Th1) predominantly produce interferon (IFN) γ and promote delayed type hypersensitivity, while type 2 T cells (Th2) secrete interleukin (IL)-5 and IL-4 and regulate B cell and eosinophil mediated responses. IL-2 is recognised as the principal T cell growth factor and is produced by both classes of Th cells in humans.³

A number of studies of endobronchial biopsy and bronchoalveolar lavage (BAL) specimens have shown a predominance of IL-4 and IL-5 gene expression in asthma and atopy.^{2,4-7} However, the quantitation of IL-4 gene expression in these studies is likely to have been confounded by the unrealised co-detection of the IL-4 alternative splice variant, IL-4 δ 2.⁸

The use of polymerase chain reaction (PCR) technology in asthma has usually been characterised by qualitative assessments⁹⁻¹¹ or, at best, semiquantitative assays dependent on "normalisation" by comparison with housekeeping gene expression.^{6,12} Beta-actin, a cytoskeletal protein, and GAPDH, an enzyme of glycolysis, are the two most widely used housekeeping genes,¹³ based on rather anecdotal evidence of their consistency of expression. We have recently used a reverse transcription (RT) competitive PCR method to directly quantitate β -actin and GAPDH mRNA levels in a cross sectional series of normal control and asthmatic airway biopsy specimens and BAL cells. Asthmatic subjects not using inhaled corticosteroids (ICS) were found to express up to 10 times less GAPDH and β -actin mRNA than asthmatic subjects using ICS or normal controls (unpublished data). It is likely that uncritical use of such housekeeping genes for normalising data has led to false confidence in previous semiquantitative data.

In this cross sectional study we have used similar competitive PCR assays to quantitate IL-5, IL-4, IL-4 δ 2, IL-2, and IFN γ in BAL cells and airway biopsy specimens without the need for normalisation by housekeeping gene expression with its potential for confounding.

Methods

SUBJECTS

One hundred and eleven asthmatic volunteers took part in the study. Airway endobronchial biopsy specimens were obtained from 80 subjects and BAL cells from 89 (table 1). BAL cells were obtained from a number of subjects from which biopsy specimens were not available and vice versa, hence the total number of asthmatics in the study was 111 rather than closer to 89. Asthmatic subjects fulfilled the American Thoracic Society criteria for asthma¹⁴ with documented airway reversibility to inhaled bronchodilators and increased responsiveness to methacholine. They all used albuterol for relief of symptoms as needed, with 93 patients using regular ICS. Salmeterol (50 μ g twice daily) was used by 12 patients from whom BAL cells were obtained and in five

Department of
Respiratory Medicine,
Alfred Hospital and
Monash University
Medical School,
Melbourne, Australia
E M Glare
M Divjak

Department of
Epidemiology and
Preventive Medicine
M J Bailey

Discipline of Medicine,
University of Tasmania
Medical School, Royal
Hobart Hospital,
Hobart, Australia
E H Walters

Correspondence to:
Professor E H Walters
haydn.walters@
utas.edu.au

Received 6 September 2000
Returned to authors
21 December 2000
Revised version received
22 February 2001
Accepted for publication
12 March 2001

Table 1 Characteristics of subjects undergoing bronchoscopy

	Asthmatics		Normal controls	
	BAL cells (n=89)	Biopsies (n=80)	BAL cells (n=30)	Biopsies (n=24)
Sex (M:F)	52:37	45:35	21:9	15:9
Median (range) age (years)	42 (20–70)	42 (21–69)	30 (20–61)	29 (20–61)
Atopy (+/-)	72/17	63/17	13/17	13/11
ICS use (+/-)	72/17	66/14	0/30	0/24
Median (range) ICS dose/day (BDP)*	400 (100–1500)	400 (100–1000)	–	–
Median (range) PD ₂₀ methacholine (mg)	0.028 (0.001–6.4)	0.026 (0.001–6.4)	>3.4	>3.4
Median (range) FEV ₁ (%)	90 (60–128)	88 (58–120)	112 (80–132)	108 (91–132)

ICS = inhaled corticosteroid; FEV₁ = forced expiratory volume in one second; PD₂₀ = dose of methacholine provoking a fall in FEV₁ of 20% or more.

*Dose in µg per day of beclomethasone dipropionate (BDP).

of those from whom biopsy specimens were taken. No patient was taking any other anti-asthma medication. Volunteers who had suffered from acute respiratory tract infection during the previous 4 weeks, who had any change in asthma medication, or had been admitted to hospital with airway disease in the 4 weeks before the study were excluded.

Forty five normal volunteer control subjects were also recruited. They had no history of asthma or other respiratory diseases, were using no medication, had no bronchodilator response to albuterol, and a negative challenge test to 3.2 mg inhaled methacholine. All asthmatic and control subjects were non-smokers and gave informed written consent before commencing the study, which was approved by the Alfred Hospital ethics committee.

Atopic status was assessed by skin prick testing to a panel of seven common aeroallergens and was defined by a response of ≥3 mm diameter to one or more of them. Forced expiratory volume in one second (FEV₁) and bronchial responsiveness to methacholine were measured in the morning and after a period of at least 8 hours without bronchodilators (24 hours for long acting β agonists). A rolling seal spirometer (SensorMedics Corporation, Yorba Linda, CA, USA) was used for measurement of FEV₁ according to American Thoracic Society guidelines. Bronchial responsiveness to methacholine was assessed by a previously established dosimeter technique¹⁵ and expressed as the cumulative dose required to provoke a 20% decrease in FEV₁ (PD₂₀) using linear interpolation from a dose-response plot.

BRONCHOSCOPY

Bronchoscopy was performed within 2 days of methacholine challenge. Subjects were pre-medicated with 0.4 mg intravenous atropine and 5–15 mg midazolam. Inhaled albuterol (200 µg) was given to all subjects 15 minutes before bronchoscopy. Lignocaine spray (4%) was applied to the pharynx and larynx and 2% lignocaine was administered below the vocal cords in 2 ml aliquots as required up to a maximum dose of 6 ml. Subjects were monitored using pulse oximetry and oxygen was administered at 4 l/min during the procedure. BAL of the right middle lobe was performed by instilling three aliquots of 60 ml phosphate buffered saline with immediate aspiration into siliconised glass containers. Endobronchial biopsy specimens were taken from the segmental subcarinae of the right lower lobe of each patient using alligator forceps (Olympus, Tokyo, Japan). Samples were transported on ice to the laboratory and two biopsy specimens were snap frozen in liquid nitrogen within 15 minutes and stored at –80°C. BAL cells in aliquots of 1–4 × 10⁶ cells were rapidly pelleted by centrifugation at 1200 rpm for 15 minutes, snap frozen, and stored at –80°C.

RNA EXTRACTION

RNA from BAL cells and endobronchial biopsy specimens were extracted with RNeasy total RNA kit (Qiagen, Hilden, Germany). Tissue was homogenised in 700 µl lysis buffer RLT using a Polytron rotor-stator (Kinematica, Luzern, Switzerland) followed by aspiration 10 times through a 21 gauge syringe needle to shear chromosomal DNA. Cell pellets were resuspended in 700 µl lysis buffer RLT by aspiration 10 times through a 21 gauge syringe needle. RNA was eluted from spin columns with 40 µl diethylpyrocarbonate treated water. Aliquots of 4 µl of RNA were quantitated by capillary spectrophotometry using an absorbance capillary adaptor cell (Helix, San Diego, USA) and a Cary 1 spectrophotometer (Varian, Melbourne, VIC, Australia) with background correction at 320 nm. Samples with (A₂₆₀–A₃₂₀)/(A₂₈₀–A₃₂₀) ratios less than 1.7 and/or yields less than 0.5 µg total RNA were excluded from subsequent analysis. BAL cells gave a success rate of 90% with a yield of 2.9 µg (range 0.6–12.2) while biopsy specimens were

Table 2 Details of primers used

mRNA	Primer sequence	Annealing temperature (°C)	PCR product size (bp)	
			Native	Competitor
IL-2	Upper: GAATGGAATTAATAATTACAAGAATCC Lower: TGTTTCAGATCCCTTTAGTTCCAG	56	229	305
IL-4 and IL-4δ2	Upper: CCGGCAACTTTGTCCAC Lower: TCTGGTTGGCTTCCTTCAC	64	339 and 291	499
IL-5	Upper: GATAGCCAATGAGACTCTGAGG Lower: TTGCCTGGAGGAAATACTT	52	493	409
IFN _γ	Upper: CGTTTGGGTTCTCTTGGCTGTT Lower: CTCCTTTTTCGCTTCCCTGTTTT	60	423	570
IL-5 mutagenesis	Composite upper: *GATAGCCAATGAGACTCTGAGG- TGGCTGTGCCTATTTCTATG Lower: TTGCCTGGAGGAAATACTT	55	–	409

*Sequence identical to IL-5 upper primer is indicated by underlining.

extracted with a success rate of 70% and a median yield of 1.0 µg (range 0.5–6.5).

COMPETITOR TEMPLATES AND PRIMERS

An IL-5 competitor was synthesised by PCR mediated mutagenesis as previously described.¹⁶ The 42 base composite primer (table 2) was used with the lower IL-5 primer in 30 cycles of PCR with 250 ng of human chorionic male DNA as the template. The PCR product was diluted 1:30 and 2 µl aliquots were amplified in five secondary reactions as for samples for 35 cycles. The resulting PCR product was purified by phenol-chloroform extraction and ethanol precipitation.¹⁷

DNA competitor templates for IL-4 and IFN γ PCR were obtained from Clontech (Palo Alto, CA, USA). IL-2 PCR used a synthetic mRNA competitor, pAW109 cRNA (Perkin-Elmer, Foster City, CA, USA). Primers (synthesised by GeneWorks, Adelaide, SA, Australia) were redesigned using oligo 5.0 primer analysis software (National Biosciences, Plymouth, MN, USA) to improve their specificity and annealing profiles (table 2). All competitors were diluted to working concentrations with 50 µg/ml nuclease-free glycogen (Roche Diagnostics Australia, Castle Hill, NSW, Australia) in 10 mM Tris HCl, pH 7.5.

VALIDATION OF COMPETITIVE PCR

The simultaneous quantitation of IL-4 and IL-4 δ 2 by dual mRNA species competitive PCR was conducted as previously.⁸ To establish that mRNA and competitor templates amplify equally, a "changing input-output ratio" series of reactions was set up for each gene. To test the validity of IL-2 RT-PCR, a serial titration of pAW109 cRNA from 2×10^3 to 5.12×10^5 copies per reaction was established in 15 µl cDNA synthesis reactions containing 180 ng phytohaemagglutinin (PHA) stimulated peripheral blood mononuclear cell (PBMC) RNA.¹⁷ Aliquots of 2 µl cDNA were added to 100 µl PCRs which were then split into duplicates and amplified for 35 and 40 cycles. For IL-5 competitive PCR the competitor was titrated in twofold steps from 5.12×10^4 copies to 200 copies against PHA stimulated PBMC cDNA and duplicate reactions were amplified for 35 and 40 cycles. IFN γ competitive PCR was similarly tested, titrating from 8×10^4 copies to 3.13×10^2 copies competitor and amplifying for 30 and 35 cycles.

REVERSE TRANSCRIPTION AND COMPETITIVE PCR

cDNA was synthesised from 0.27–3.86 µg RNA (mean 0.95 and 2.03 µg for biopsy specimens and BAL cells, respectively) in a volume of 57 µl consisting of 1 \times GeneAmp PCR buffer, 5 mM MgCl₂, 1 mM deoxyribonucleotide triphosphate, 0.8 U/µl RNase inhibitor, 2 µM oligo d(T)₁₆ and 2 U/µl MuLV reverse transcriptase (all from Perkin-Elmer). For cDNA synthesis from BAL cell RNA, 3×10^5 copies of pAW109 cRNA was added to each reaction while, for biopsy RNA, 4×10^3 copies of pAW109 RNA was used. Reactions were incubated for 1 minute at 15°C and then the temperature was increased to 42°C over 9

minutes followed by 1 hour at 42°C, 5 minutes at 85°C and 1 minute at 4°C.

For IL-4 and IL-5 competitive PCR, 20 µl of cDNA was added to a 100 µl reaction consisting of 2 U AmpliTaq Gold, 1 \times GeneAmp PCR buffer, 1.5 mM MgCl₂, 200 µM deoxyribonucleotide triphosphate (all from Perkin-Elmer), 0.2 µM upper and lower primers, and 40 copies of competitor. Thermal cycling was conducted in an MJ Research PTC-200 (Watertown, MA, USA) with the temperature profile commencing with an initial denaturation of 8 minutes at 94°C followed by 50 cycles of 94°C for 1 minute, annealing temperature (table 2) for 1 minute, and 72°C for 1 minute, concluding with 7 minutes at 72°C and 1 minute at 4°C. IL-2 and IFN γ PCR was conducted in 50 µl reactions as above except that 5 µl and 3 µl of cDNA, respectively, and 45 cycles of amplification were used. For IFN γ PCR of BAL cDNA 600 copies of competitor was used, while 200 copies were used with biopsy cDNA.

The PCR products were resolved by electrophoresis through 1.5 mm 4% 19:1 PAGE gels (acrylamide:bisacrylamide; Bio-Rad Laboratories, Hercules, CA, USA) in $2 \times$ TAE¹⁷ using active cooling to maintain the temperature at 16–18°C. PAGE gels were stained by overlay with 1:10 000 SYBR Green I (Molecular Probes, Eugene, OR, USA) in $2 \times$ TAE for 45 minutes and then scanned directly in a laser based fluorescence scanner (FluorImager 575, Molecular Dynamics, Sunnyvale, CA, USA). PCR product band volumes were quantitated with ImageQuaNT software (Molecular Dynamics). Native:competitor product ratios were calculated and the levels of gene expression reported as copies of mRNA per µg total RNA.

STATISTICAL ANALYSIS

The differences between atopic and non-atopic asthmatics and controls were analysed using a generalised linear model with an interaction between atopy and asthma being fitted to the model. Similarly, other interaction terms such as ICS usage were fitted where necessary. Age, sex, use of long acting β_2 agonists, and RT-PCR batch factors were included in all models as potential confounding variables and then post hoc comparisons were made between groups after fitting the overall model. The results are presented as least squares mean (SE) values with differences between groups calculated in the order written. Given that some outcome variables followed a log-normal distribution, the relevant data were calculated as log_e so these comparisons are presented as ratios with 95% confidence intervals (CI) rather than differences. The Pearson correlation was used to test associations between IL-4 and IL-4 δ 2 and the Mann-Whitney U test was used for intergroup comparisons for IL-4/ β -actin ratios. Statistical analyses were performed using SAS version 6.12 software (SAS institute, Cary, NC, USA).¹⁸

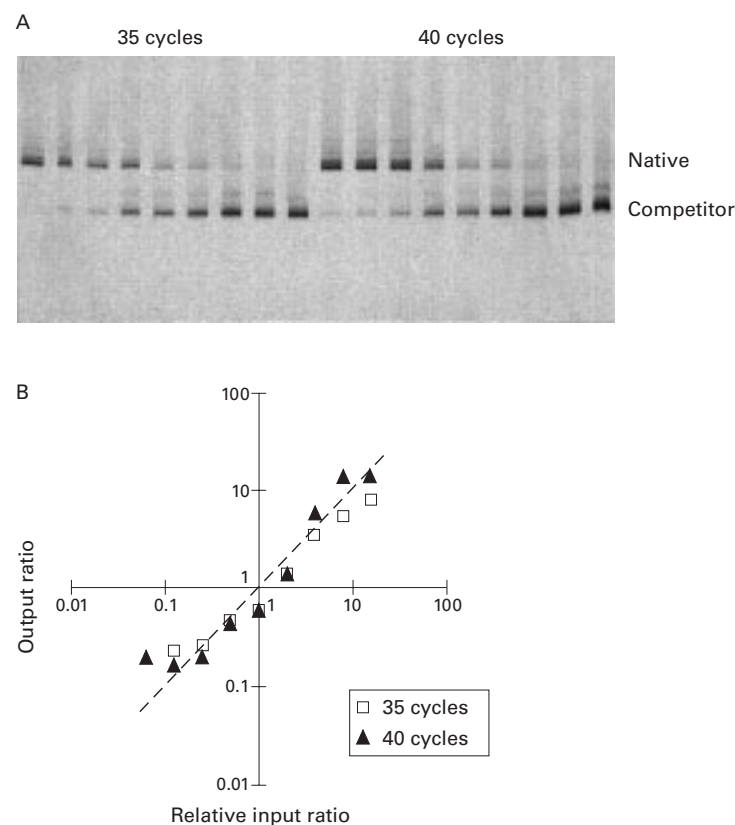


Figure 1 Test of amplification efficiency of IL-5 competitive PCR by titration of competitor. (A) PAGE of IL-5 competitive PCR demonstrating a changing input ratio series with increasing amount of competitor left to right. (B) The output native/competitor ratios of each series are plotted against input ratios relative to the one or two output ratios closest to 1. The actual data lay close to the line of prediction where output ratios equal input ratios. The line of prediction is indicated by a dashed line with a slope of 1.

Results

VALIDATION OF COMPETITIVE PCR

Titration of IL-5 (fig 1) and IFN γ (data not shown) competitors against standard aliquots of PHA stimulated PBMC cDNA in changing ratio experiments showed that, in each case, the ratios followed the predicted line. Similarly, serial titration of the IL-2 competitor pAW109 cRNA against PHA stimulated PBMC RNA followed by subsequent RT-PCR produced output ratios closely in proportion to the input ratios. Thus, IL-5, IFN γ , and IL-2 PCR products competed with their respective competitor templates with consistent efficiencies irrespective of their input ratio, allowing the input copies of mRNA to be calculated. Similar data for IL-4 and IL-4 δ 2 have been published previously.⁸

ASTHMA, ATOPY AND TH CYTOKINE EXPRESSION IN BAL CELLS AND BIOPSY SAMPLES

No cross sectional differences in IL-5 mRNA levels were observed in biopsy samples (fig 2C). In BAL cells the only signal for IL-5 was an increase in atopic subjects with non-atopic asthmatics being intermediate but not significantly different from any other group (fig 2A). Thus, in normal control BAL cell RNA samples, IL-5 mRNA levels were higher in atopic subjects (least squares mean (SE) $1.5 (1.0) \times 10^2$ copies/ μ g RNA) than in non-atopic subjects ($6.0 (2.6) \times 10^1$ copies/ μ g RNA, difference ratio 2.4, 95% CI of ratio 1.2 to 5.1,

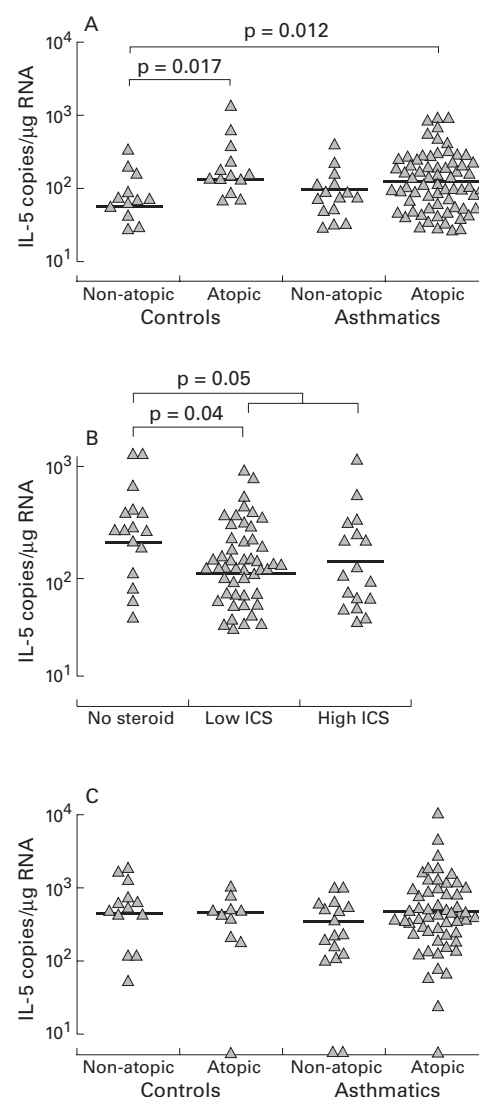


Figure 2 IL-5 gene expression related to atopy, asthma, and use of inhaled corticosteroids (ICS). IL-5 mRNA levels were increased with atopy (A) and decreased with ICS use (B) in BAL cells but not in biopsy samples (C). As a group the asthmatic subjects were not different from controls.

$p=0.017$). While levels of IL-5 in subjects with atopic asthma ($1.4 (0.3) \times 10^2$ copies/ μ g RNA, difference ratio 2.4, 95% CI of ratio 1.2 to 4.8, $p=0.012$) were significantly higher than in non-atopic controls, they were not different from atopic controls or subjects with non-atopic asthma ($1.1 (0.3) \times 10^2$ copies/ μ g RNA).

BAL cells from asthmatic subjects not using ICS expressed more IL-5 mRNA than those using ICS ($1.9 (0.7) \times 10^2$ v $1.0 (0.2) \times 10^2$ copies/ μ g RNA, difference ratio 1.9, 95% CI of ratio 1.0 to 3.5, $p=0.05$), but there was no obvious dose response effect (fig 2B).

Neither in BAL cells nor biopsy specimens did IL-4, IL-4 δ 2, or IFN γ mRNA levels differ with atopic status or asthma (fig 3). Furthermore, there was no difference between asthmatic subjects using ICS and those not receiving ICS treatment.

IL-2 gene expression in biopsy specimens did not differ significantly between controls and asthmatic subjects not using ICS ($1.3 (0.6)$

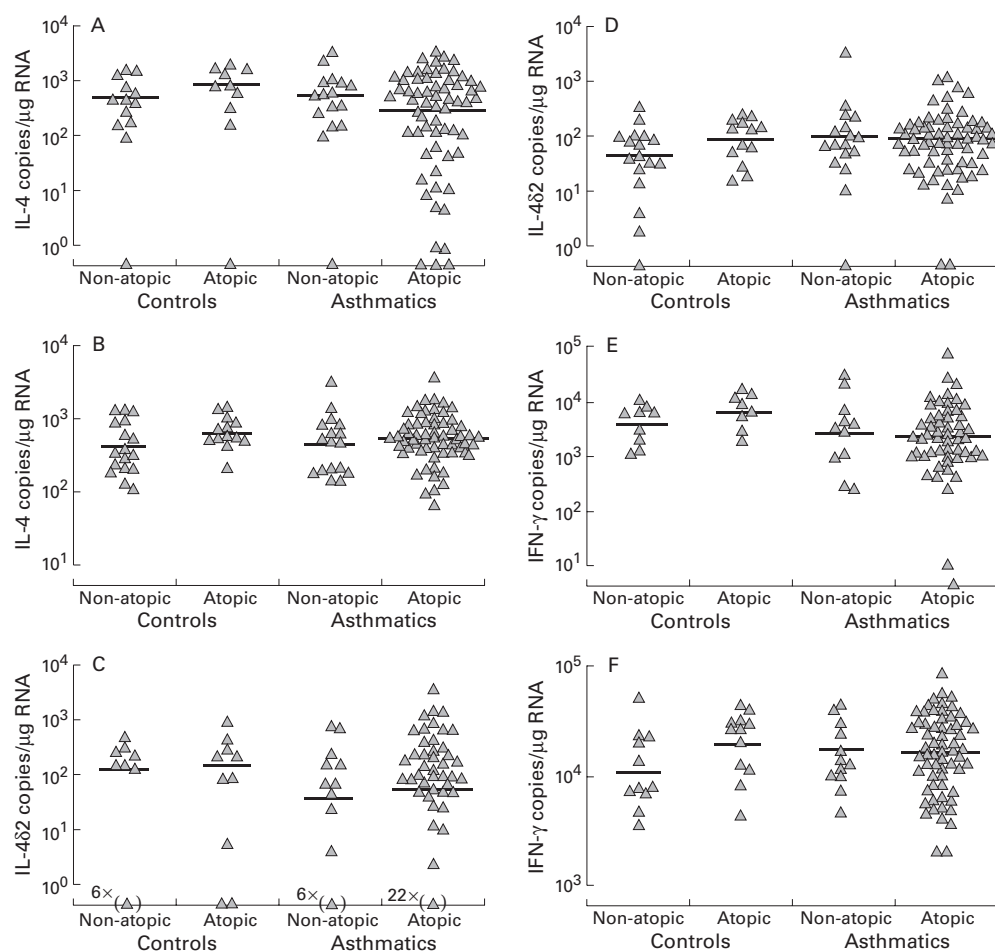


Figure 3 Cross sectional analyses in biopsy specimens (A, C, E) and BAL cells (B, D, F) of (A, B) IL-4, (C, D) IL-4δ2, and (E, F) IFNγ mRNA levels.

$\times 10^4$ v $2.7 (2.9) \times 10^4$ copies/μg RNA; fig 4A). However, biopsy specimens from asthmatic subjects using up to 500 μg/day of ICS ($3.5 (0.4) \times 10^3$ copies/μg RNA, difference ratio 0.13, 95% CI of ratio 0.02 to 0.92, $p=0.042$) and those using 500–1500 μg/day ICS ($2.0 (0.3) \times 10^3$ copies/μg RNA, difference ratio 0.07, 95% CI of ratio 0.01 to 0.57, $p=0.014$) expressed less IL-2 mRNA than asthmatic subjects not receiving treatment with ICS. In common with IFNγ and IL-4 gene expression, IL-2 mRNA levels did not vary with atopy. No differences were detected in IL-2 mRNA expression in BAL cells (fig 4B).

EVIDENCE OF COORDINATED EXPRESSION OF IL-4 AND IL-4δ2

Pearson regression analysis indicated that IL-4 and IL-4δ2 mRNA levels were positively correlated in both BAL cells ($r^2=0.53$, $p<0.0001$, $n=111$) and biopsy specimens ($r^2=0.31$, $p<0.0001$, $n=65$; fig 5). In most of the samples IL-4 mRNA levels were higher than IL-4δ2 and the slope of the regression curve was 3.1 and 13.4 for biopsy specimens and BAL cells, respectively.

EFFECT OF USING HOUSEKEEPING GENE EXPRESSION FOR NORMALISATION

To demonstrate the potential for confounding by use of housekeeping gene mRNA levels as

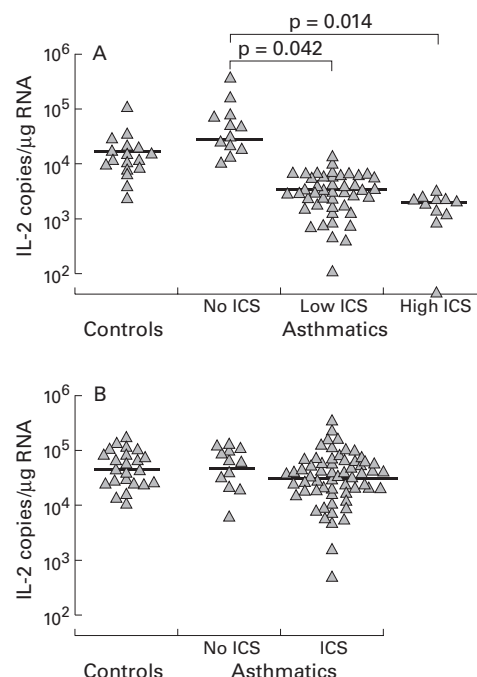


Figure 4 IL-2 gene expression, asthma, and use of inhaled corticosteroids (ICS) in (A) biopsy specimens and (B) BAL cells.

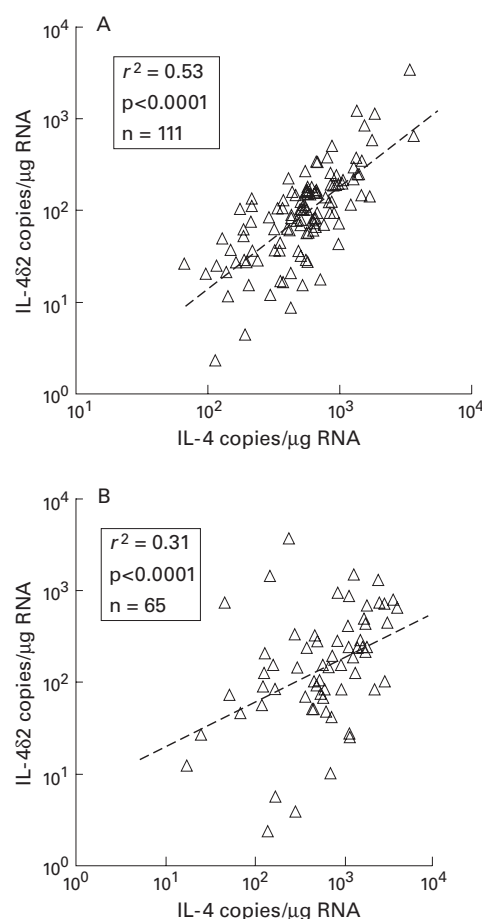


Figure 5 Pearson correlations between IL-4 and IL-4δ2 in (A) BAL cells and (B) biopsy specimens indicating a degree of coordinated expression of IL-4 mRNA and its splicing variant, IL-4δ2.

denominators of mRNA expression for genes of interest, β -actin competitive PCR was conducted on BAL cell RNA using the same cDNA reaction. While IL-4 gene expression assessed directly did not differ with asthma or atopy, significant differences were seen when

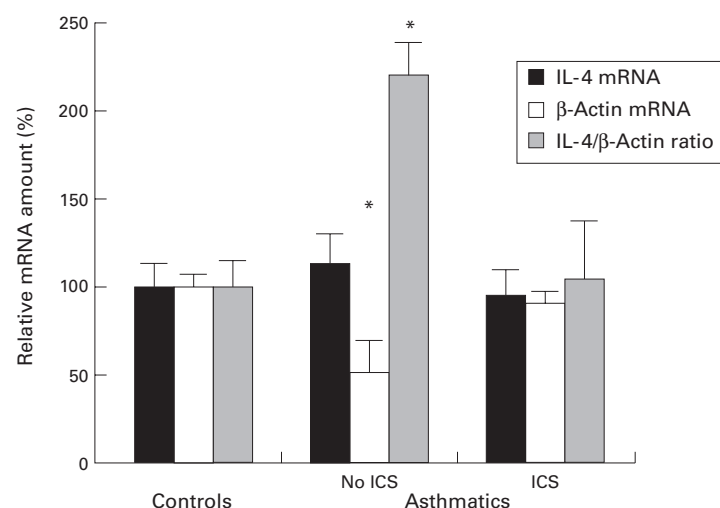


Figure 6 Effect of using β -actin to normalise IL-4 mRNA levels in BAL cells. To compare IL-4 and β -actin mRNA levels and their ratios the least square mean (SE) values are presented as percentages of the respective normal control least squares mean in each group of subjects. Significant differences were observed for β -actin and IL-4/ β -actin ratios, with asthmatic subjects not using inhaled corticosteroids (ICS) being significantly different from normal controls and asthmatic subjects using ICS. * $p < 0.001$.

IL-4 mRNA levels were expressed as a ratio ("normalised") with β -actin, with asthmatics not using ICS ($17.6 (3.3) \times 10^{-6}$) having a higher ratio than normal controls ($8.0 (1.2) \times 10^{-6}$, median difference 11.1×10^{-6} , 95% CI 5.5 to 17.4×10^{-6} , $p = 0.0007$) and asthmatic subjects using ICS ($8.4 (2.7) \times 10^{-6}$, median difference 10.6×10^{-6} , 95% CI 6.3 to 16.6×10^{-6} , $p = 0.0003$; fig 6). Thus, apparent differences in the IL-4/ β -actin ratios are confounded by the differences in β -actin mRNA levels between the groups.

Discussion

This study is the first to use quantitative competitive PCR methodology to measure Th cell cytokines in a cross sectional analysis of airway samples from asthmatic and normal control subjects. We believe these are also the first data not to be confounded by changes in house-keeping gene expression which we have confirmed to be a real potential problem in such airway samples. We found that, in BAL cells, atopic controls and atopic asthmatic subjects expressed more IL-5 than non-atopic controls, with non-atopic asthmatic subjects having intermediate levels. Within the asthmatic subjects there was an inhibitory effect of ICS on IL-5 mRNA levels in BAL cells. However, in biopsy specimens no cross sectional differences in IL-5 were detectable. Similarly, BAL cell and biopsy levels of IL-4, IL-4δ2, and IFN γ did not differ significantly with atopy, asthma, or ICS use. In contrast, IL-2 gene expression in biopsy samples but not in BAL cells was decreased with ICS use. Strong correlations between IL-4 and IL-4δ2 in both BAL cells and biopsy samples suggest a degree of coordinated expression, above a threshold of IL-4 production.

The use of a combination of an RNA competitor for IL-2 competitive RT-PCR and DNA competitors for RT followed by competitive PCR allowed all PCR assays to be conducted from a single RT reaction containing both sample RNA and IL-2 cRNA competitor. The RT competitive PCR assays in our recent study of β -actin and GAPDH gene expression in asthma were also conducted from this single cDNA synthesis reaction. A number of reviewers of competitive PCR technology have recommended the use of RNA competitors to control both cDNA synthesis and PCR steps.^{19 20} Multiple competitive reactions per sample, usually titrating the competitor against constant aliquots of sample,²¹ are increasingly being used to improve the variability and resolution of the method. The low yield of RNA from airway samples, particularly from biopsy specimens, necessitates efficient use of sample RNA and precludes the use of multiple RT and/or PCR reactions per mRNA level determination.

Capillary spectrophotometry allowed the amount of RNA to be used as the denominator between samples in this study rather than resorting to the use of housekeeping gene expression. In our study of housekeeping gene expression both β -actin and GAPDH mRNA levels were shown to be significantly lower in

asthmatic subjects not using ICS than in those using ICS and normal controls. We have now confirmed the problem of confounding by showing that IL-4 mRNA levels expressed as ratios with β -actin give artefactual differences between the groups. The most extensive studies to date of T cell cytokines in asthma have been semiquantitative in that they have used external standard curve fitting in conjunction with normalisation of housekeeping gene expression.^{6 22-24} Since housekeeping gene expression is the ultimate denominator between samples in these studies, the results are very likely to be confounded by differences in housekeeping expression.

We used multivariate linear modelling statistics to control for confounding effects while testing the significance of other factors. This included correction for differences between groups attributable to atopy while, for example, testing the difference due to ICS use. While RNA samples were stratified by RNA concentration to facilitate cDNA synthesis and avoid systematic bias, we found that batch parameters were significant confounders, although differing batches were random between assays and not associated with the amount of input sample RNA. Likely causes include pipetting inaccuracies leading to differences in competitor amounts and differences in gel resolution, quality and staining influencing the measurement of native and competitor PCR products. Although multivariate statistics optimise power of such studies and allow a degree of correction for the methodological weakness, it is obviously important to avoid systematic biases where possible and, in particular, to minimise the number and differences between batches.

Despite the quantitative nature of our competitive PCR assays, we were only able to detect minor differences in cytokine gene expression with atopy, asthma, and ICS use. In the BAL fluid samples there were no significant differences between subject groups in the percentages of eosinophils, macrophages, or lymphocytes (data not shown). The asthmatic subjects in this study were clinically stable but had a wide range of bronchial hyperreactivity and dose of ICS needed, although current activity of the disease in terms of symptom levels was comparable between subjects. However, the results are cross sectional only and the absence of longitudinal PCR based studies of asthma in the literature is testament to the difficulties associated with such studies.

PCR assays commence with cell homogenisation and as a strategy are good for detecting large numbers of cells expressing small amounts of mRNA, but are relatively poor at detecting small numbers of upregulated cells producing larger amounts of message which become diluted with lysis. In situ hybridisation studies indicate that the latter pattern of expression is likely in asthma.^{4 6 7} A major problem with the application of quantitative PCR to asthma is the low levels of mRNA assayed, with some mean levels in this study being below 100 copies per μ g total RNA. The pathological variability of the stable asthmatic

subjects in this study is reflected in their mRNA levels and contributed to the lack of contrast between stable asthmatic and normal control subjects.

Our earlier study of IL-4 and its receptor antagonist encoding splicing variant, IL-4 δ 2,⁸ together with the new data presented here, indicate that both IL-4 mRNA variants are commonly expressed in lung samples. The primers used in this study to amplify IL-2 mRNA do not amplify the splicing variants IL-2 δ 2 or IL-2 δ 3 which also encode receptor antagonists.²⁵ Given the difficulty of distinguishing cytokine splicing variants and, in particular, the absence of antibodies of confirmed specificity, previous studies are likely to be further confounded by co-detection.^{4 7 26}

The strongest evidence that increased IL-4 and IL-5 expression is associated with asthma comes from airway allergen challenge in atopic patients. IL-5^{10 27-30} and IL-4^{27 28} gene transcription was reported to be upregulated 18-24 hours after challenge compared with that found immediately after challenge or compared with vehicle only challenge sites. Interestingly, not all studies found significant increases in IL-4 gene expression, even with acute allergen challenge.^{29 30} IL-4 and IL-5 have been correlated with asthma symptoms³¹ and may be more important in acute asthma than in stable asthma. The inconsistency of antigen challenge studies suggests that repeat antigen stimulation (both natural and introduced) may be required to obtain uniform upregulation of IL-4 and IL-5 in airway tissue. The expression of IL-2 and IFN γ was not changed by allergen challenge in the lung.²⁷⁻³⁰ In our group of stable non-acutely challenged asthmatics we did not find significant increases in IL-4, IL-4 δ 2, IL-2, or IFN- γ mRNA levels compared with normal controls. Differences in IL-5 gene expression related to atopy rather than to asthma were detected in BAL cells but not in biopsy specimens.

In our earlier study of IL-4 and IL-4 δ 2 in nine asthmatic and seven control subjects we also found no differences in absolute levels of mRNA but the asthmatic subjects were more likely to express IL-4 δ 2.⁸ With larger numbers of samples we were unable to repeat this earlier observation, possibly because the more heterogeneous range of patients in the current study may have masked the effect, if it truly exists. However, we did find that there was a strong positive correlation between IL-4 and IL-4 δ 2, but with IL-4 expression predominating over IL-4 δ 2, in both BAL cells and biopsy specimens. This is strongly suggestive of coordinated expression of IL-4 and its receptor antagonist encoding splicing variant. It is conceivable that splicing of IL-4 δ 2 may commence after a threshold of IL-4 expression is reached, allowing IL-4 δ 2 to act as a brake on IL-4 mediated responses. However, expression of mRNA does not necessarily mean that it is translated into protein or that the protein will be secreted. There is considerable overlap in the function of IL-4 and IL-13, mediated in part by shared receptors and receptor chains. Their close linkage on chromosome 5 and

common promoter sequences mediate co-regulation.³² The co-expression of IL-4 and IL-4δ2 mRNA adds further strength to the concept that the balance of IL-4, IL-4δ2, and IL-13 and their receptors modulates IL-4 mediated responses.⁸ However, we did not measure IL-13 mRNA levels in this study.

The major purpose of this study was to perform a definitive evaluation of the usefulness of using quantitative competitive PCR in asthma research, mainly because previous PCR based studies have been so methodologically inadequate. The recent advent of real time quantitation of PCR has greatly simplified RT-PCR quantitation³³ but the technology still needs to be evaluated carefully in lung samples, particularly with respect to the use of denominators such as housekeeping gene expression. The reality is that RT-PCR methodology is expensive, wasteful of material, and variable between samples. Even so, signals can be picked up but, in our experience, with little if any greater sensitivity than immunohistochemistry or in situ hybridisation methods.

The authors thank Ros Bish, Sally Gollant, Dr Frank Thien, Dr Xun Li, and Dr David Reid for their clinical assistance and Bernadette Orsida, Tiffany Bamford, Michael Pais and Bryce Feltis for sample reception. This work was supported by grants from the National Health and Medical Research Council and GlaxoWellcome Australia.

- Bousquet J, Chané P, Lacoste JY, et al. Eosinophilic inflammation in asthma. *N Engl J Med* 1990;323:1033-9.
- Walker C, Bode E, Boer L, et al. Allergic and nonallergic asthmatics have distinct patterns of T-cell activation and cytokine production in peripheral blood and bronchoalveolar lavage. *Am Rev Respir Dis* 1992;146:109-15.
- Borish L, Rosenwasser LJ. Update on cytokines. *J Allergy Clin Immunol* 1996;97:719-33.
- Ying S, Durham SR, Corrigan CJ, et al. Phenotype of cells expressing mRNA for TH2-type (interleukin 4 and interleukin 5) and TH1-type (interleukin 2 and interferon gamma) cytokines in bronchoalveolar lavage and bronchial biopsies from atopic asthmatic and normal control subjects. *Am J Respir Cell Mol Biol* 1995;12:477-87.
- Bradding P, Roberts JA, Britten KM, et al. Interleukin-4, -5, and -6 and tumor necrosis factor-alpha in normal and asthmatic airways: evidence for the human mast cell as a source of these cytokines. *Am J Respir Cell Mol Biol* 1994;10:471-80.
- Humbert M, Durham SR, Ying S, et al. IL-4 and IL-5 mRNA and protein in bronchial biopsies from patients with atopic and nonatopic asthma: evidence against "intrinsic" asthma being a distinct immunopathologic entity. *Am J Respir Crit Care Med* 1996;154:1497-504.
- Robinson DS, Hamid Q, Ying S, et al. Predominant TH2-like bronchoalveolar T-lymphocyte population in atopic asthma. *N Engl J Med* 1992;326:298-304.
- Glare EM, Divjak M, Rolland JM, et al. Asthmatic airway biopsy specimens are more likely to express the IL-4 alternative splice variant IL-4delta2. *J Allergy Clin Immunol* 1999;104:978-82.
- Broide DH, Lotz M, Cuomo AJ, et al. Cytokines in symptomatic asthma airways. *J Allergy Clin Immunol* 1992;89:958-67.
- Krishnaswamy G, Liu MC, Su SN, et al. Analysis of cytokine transcripts in the bronchoalveolar lavage cells of patients with asthma. *Am J Respir Cell Mol Biol* 1993;9:279-86.
- Gelder CM, Barnes PJ, O'Connor BJ, et al. Cytokine mRNA profiles of normal and asthmatic peripheral blood cells and endobronchial biopsies. *Biochem Soc Trans* 1996;24:315S.
- Gibson PG, Zlatich K, Scott J, et al. Chronic cough resembles asthma with IL-5 and granulocyte-macrophage colony-stimulating factor gene expression in bronchoalveolar cells. *J Allergy Clin Immunol* 1998;101:320-6.
- Gilliland G, Perrin S, Bunn HF. Competitive PCR for quantitation of mRNA. In: Innis MA, ed. *PCR protocols: a guide to methods and applications*. San Diego: Academic Press, 1990:60-9.
- American Thoracic Society. Standards for the diagnosis and care of patients with chronic obstructive pulmonary disease and asthma. *Am Rev Respir Dis* 1987;136:225-44.
- Beach JR, Young CL, Avery AJ, et al. Measurement of airway responsiveness to methacholine: relative importance of the precision of drug delivery and the method of assessing response. *Thorax* 1993;48:239-43.
- Celi FS, Zenilman ME, Shuldiner AR. A rapid and versatile method to synthesize internal standards for competitive PCR. *Nucl Acids Res* 1993;21:1047.
- Ausubel FA, Brent R, Kingston RE, et al, eds. *Current protocols in molecular biology*. New York: John Wiley & Sons, 1999.
- Littell R, Milliken G, Stroup W, et al. *SAS system for mixed models*. Version 6.12. Cary, NC: SAS Institute, 1996.
- Zimmermann K, Mannhalter JW. Technical aspects of quantitative competitive PCR. *Biotechniques* 1996;21:268-72, 74-9.
- Freeman WM, Walker SJ, Vrana KE. Quantitative RT-PCR: pitfalls and potential. *Biotechniques* 1999;26:112-22, 24-5.
- Gilliland G, Perrin S, Blanchard K, et al. Analysis of cytokine mRNA and DNA: detection and quantitation by competitive polymerase chain reaction. *Proc Natl Acad Sci USA* 1990;87:2725-9.
- Powell N, Humbert M, Durham SR, et al. Increased expression of mRNA encoding RANTES and MCP-3 in the bronchial mucosa in atopic asthma. *Eur Respir J* 1996;9:2454-60.
- Humbert M, Durham SR, Kimmitt P, et al. Elevated expression of messenger ribonucleic acid encoding IL-13 in the bronchial mucosa of atopic and nonatopic subjects with asthma. *J Allergy Clin Immunol* 1997;99:657-65.
- Humbert M, Corrigan CJ, Kimmitt P, et al. Relationship between IL-4 and IL-5 mRNA expression and disease severity in atopic asthma. *Am J Respir Crit Care Med* 1997;156:704-8.
- Tsytisikov VN, Yurovsky VV, Atamas SP, et al. Identification and characterization of two alternative splice variants of human interleukin-2. *J Biol Chem* 1996;271:23055-60.
- Minshall EM, Hogg JC, Hamid QA. Cytokine mRNA expression in asthma is not restricted to the large airways. *J Allergy Clin Immunol* 1998;101:386-90.
- Kelly EA, Rodriguez RR, Busse WW, et al. The effect of segmental bronchoprovocation with allergen on airway lymphocyte function. *Am J Respir Crit Care Med* 1997;156:1421-8.
- Robinson D, Hamid Q, Bentley A, et al. Activation of CD4+ T cells, increased TH2-type cytokine mRNA expression, and eosinophil recruitment in bronchoalveolar lavage after allergen inhalation challenge in patients with atopic asthma. *J Allergy Clin Immunol* 1993;92:313-24.
- Virchow JC Jr, Walker C, Hafner D, et al. T cells and cytokines in bronchoalveolar lavage fluid after segmental allergen provocation in atopic asthma. *Am J Respir Crit Care Med* 1995;151:960-8.
- Bentley AM, Meng Q, Robinson DS, et al. Increases in activated T lymphocytes, eosinophils, and cytokine mRNA expression for interleukin-5 and granulocyte/macrophage colony-stimulating factor in bronchial biopsies after allergen inhalation challenge in atopic asthmatics. *Am J Respir Cell Mol Biol* 1993;8:35-42.
- Robinson DS, Ying S, Bentley AM, et al. Relationships among numbers of bronchoalveolar lavage cells expressing messenger ribonucleic acid for cytokines, asthma symptoms, and airway methacholine responsiveness in atopic asthma. *J Allergy Clin Immunol* 1993;92:397-403.
- Dolganov G, Bort S, Lovett M, et al. Coexpression of the interleukin-13 and interleukin-4 genes correlates with their physical linkage in the cytokine gene cluster on human chromosome 5q23-31. *Blood* 1996;87:3316-26.
- Higuchi R, Dollinger G, Walsh PS, et al. Simultaneous amplification and detection of specific DNA sequences. *Biotechnology (NY)* 1992;10:413-7.